

 **HORIZON**

2007



 **SMARTSPACE**
WEB**BUILT TO LEAD.**

The 2007 Itasca Horizon® is the perfect coach for the long haul with storage that is as easy to access as it is plentiful. It's just one of the benefits of the impressive Evolution Chassis®. Developed in a joint venture with Freightliner®, it employs one-piece formed-steel rails for increased midsection storage and greater floorplan flexibility. Every model comes

equipped with luxurious amenities like stainless steel appliances, solid-wood cabinetry and ceramic tile floorcovering. You'll really appreciate our SmartSpace™ design philosophy that makes the most of interior space by focusing on user-friendly features.

LIVE THE GOOD LIFE

If you have an affinity for beautiful solid-wood cabinetry, you'll absolutely adore the elegant satin look created by the catalyzed topcoat finish. A sleek Euro Recliner, standard in the 40FD, will become your favorite place to relax. At night, transform the sofa/sleeper by Villa into a pillow of air. It includes an air mattress with a built-in automatic pump for fast inflation. The Euro Recliner, Villa sofa/sleeper and an available Home Theater Lounge are each available in UltraLeather™ for added style and comfort.

You'll love watching movies in your Horizon whether you have the front overhead entertainment center with 27" TV, the standalone entertainment center with 30" TV on the 40FD or the 32" LCD HDTV on the 40TD. All include a Sony® Home Theater Sound System for a true surround-sound experience.

Floor-ducted heating and ceiling-ducted TrueAir® residential central air conditioning provide maximum climate control. A heat pump is standard to help take the chill off cool mornings without starting the furnace. Choose the optional ceiling fans in the bedroom and lounge area for additional cooling comfort.

For added thermal efficiency, dual-glazed, flush-mounted windows come standard. Day/night pleated shades offer full control over light and privacy levels.

WEB Select a Key Feature

The **WEB** icon designates a Winnebago Industries Key Feature. For further in-depth information and photos use this Drop-down Menu or click on the 'Key Features' page at winnebagoind.com.



SATELLITE TV The entertainment center boasts a large, upscale flat-screen TV that can be enjoyed without shoreline or generator power, thanks to the 2,000-watt inverter/charger. Enjoy more channels by adding the in-motion satellite system.*

*Satellite TV requires a subscription. See your dealer for details.



HOME THEATER LOUNGE Your cinema experience is complete in the 40TD with the available Home Theater Lounge by Villa featuring overstuffed cushions, soft UltraLeather upholstery, individual footrests and armrests with cup holders (NA Canada).



ENTERTAINMENT CENTER A 30" Sony TV and an available electric fireplace in the entertainment center (40FD only) create a cozy evening atmosphere. You can upgrade to a 37" LCD HDTV (shown here) on the 40FD and 40TD.



40FD

A CHEF'S DELIGHT

Horizon owners enjoy a kitchen that has it all: elegant solid-surface Corian® countertops with a tile backsplash; space-saving features like a pullout pantry on the 40FD and 40TD; and stainless steel appliances like a 30" microwave/convection oven. The available G.E. Advantium™ Speedcook oven increases your cooking options.

Cleanups are easy in the large, stainless steel sink. It includes a Moen® faucet with pullout sprayer and a separate faucet for clear, satisfying Everpure® filtered water.

A dining table and four chairs come standard in each model. You can also choose the BenchMark™ full comfort dinette or the multifunction table that doubles as a computer desk. When it's time to set the table, you'll appreciate the full-extension drawer slides and wooden silverware tray.



titanium TOUCH
STAINLESS
WEB

REFRIGERATOR/FREEZER
The refrigerator features Titanium Touch Stainless finish doors that have the look of stainless steel, resist fingerprints and are warmer to the touch than traditional stainless steel. You can even use your favorite kitchen magnets.



FULL-EXTENSION DRAWER SLIDES Access pots and pans with ease in drawers that open fully.



DISHWASHER Make meal cleanup a snap by adding the available drawer-style dishwasher.



BenchMark™
FULL COMFORT DINETTE
WEB



FINE DINING
You can replace the dining table with the BenchMark full comfort dinette, which features tall backs, innerspring cushions, large, easy-to-use, flip-up storage compartments and converts into a comfy bed. You can also choose the multifunction table, which expands to seat four and doubles as a computer desk.

GOOD MORNING

The spacious bedroom is a nice place to relax after a full day of travel. A large rear slideout and a 20" LCD TV make it your own personal retreat.

The rear stereo system features an AM/FM stereo with a CD/DVD player, alarm clock, headphone jack and a connection for your MP3 player. You'll sleep the night away in the queen-size Sleep Number® Bed by Select Comfort™ (king-size available in the 40KD). A ceiling fan is also available to create a gentle breeze on those warm summer nights.

There are numerous elegant touches in the bathroom, like ceramic tile floor-covering, Corian solid-surface counter-tops, a distinguished granite-look shower surround and a high-output water heater that ensures a ready supply of hot water. Keep the vacuum at home when you add the available central vacuum system with VacPan.®



WEB VANTAGE POINT SLEEP NUMBER BED Digital remotes let you adjust each side of the available Sleep Number bed independently to your ideal level of comfort and support. Your Sleep Number – the Key to a Perfect Night's Sleep.™



WASHER/DRYER This available combination washer/dryer features multiple wash, time and temperature cycles and tucks away behind wood doors.



BATH A Moen Posi-Temp® valve regulates a consistent water temperature as you shower, even if water pressure fluctuates.

THE RIDE OF YOUR LIFE

Rediscover the joy of traveling when you take a trip in the comfortable high-back cab seats of the Horizon. Covered in soft UltraLeather and featuring available powered, six-way pedestals and integrated seat belts, they're the perfect chairs for long days on the road.

Horizon provides a superb driving experience with a tilting, telescoping SmartWheel and a touchpad transmission. Dash instruments include an electronic compass, digital thermometer, Sony rearview monitoring system and available side-view cameras that allow you to view the side of the coach for added peace of mind when turning and maneuvering. Other driver conveniences include built-in defroster fans, available GPS, map lights and power sunvisors.

While you drive, listen to CDs, AM/FM radio, or instant weather reports on the RV Radio®. It comes with a steering wheel remote that lets you change channels without taking your eyes off the road. A handheld remote is also provided to control the radio from the sofa or lounge chair. The Horizon also offers the convenience of a touchpad entry, keyless remote and a switch that lets you power the RV Radio from the house batteries when parked.

Upgrade the RV Radio to include the Sirius Satellite radio package* with over 120 channels of crystal-clear programming. This package comes with a complimentary six-month subscription.



SIDE VIDEO CAMERA

DASH The accelerator and antilock air-brake pedals adjust to fit each driver at the touch of a button. The side-view video camera system is activated by your turn signals and allows the driver to view the side of the coach through the rearview monitor system.



CHASSIS BATTERY DISCONNECT SWITCH
Conveniently located in the

engine compartment, the battery disconnect switch helps prevent chassis battery drain when storing your Horizon.



WEB TRUELEVEL Eliminate the guesswork when it comes to tank levels with our exclusive TrueLevel™ holding tank monitoring system. It incorporates detector cells that read liquid levels from outside the tank. No probes means no more corrosion, just accurate readings time after time.



WEB TRUEAIR

The residential central air conditioning system features a Coleman®-Mach® cooling unit in the basement that cools 40% faster and runs 10% quieter than roof-pod units. A new two-stage, dual-output furnace provides quieter operation and more consistent floor-ducted heating.



HYDRAULIC LEVELING JACKS

New for 2007: our exclusive three position hydraulic jack controls. Control your jacks from the A) driver's seat, B) entrance door or C) service center. Watch the jacks as you lower them from the entrance door or service center for perfect placement on the jack pads.



WEB

ONE PLACE™

Important switches, gauges and levels are mounted in this convenient systems center.



KEYLESS ENTRY Unlock the door and storage compartments using the keyless remote or touch pad entry.



WEB POWERLINE® This energy management system monitors electrical usage and automatically cycles appliances on and off to prevent power overloads.

*Sirius Satellite radio not available in Canada.

SMART STORAGE™

WEB



WEB STOREMORE No more crawling on your hands and knees to retrieve your gear. This exclusive slideout system extends exterior compartments with the slideroom for easy access. Three large, fitted containers are included to help keep your items organized.

SMART STORAGE™

Storage is always at a premium when traveling. That's why we studied the way motor home enthusiasts use their coaches to create Smart Storage, an incredibly spacious and easily accessible storage system.

One example of Smart Storage is the available folding ladder that fits into a sleek storage sleeve. The large storage bays also include additional straps and attachment points designed to hold key motor home tools and accessories.

StoreMore® is another great example of Smart Storage with large exterior storage compartments that extend with the slideroom for easy access.

The Horizon places all electrical and plumbing connections in one convenient location with color-coded labels for easy hook-ups and connections. This includes a hookup for a portable satellite dish.

You'll appreciate exterior enhancements such as electric patio and entrance-door awnings, a screen door and a sturdy holder to keep the entrance door open. An 8,000-watt Onan® Quiet Diesel™ generator sits on a pullout tray for easy access.



ENTERTAINMENT CENTER Your exterior entertainment center can be enhanced with a 20" TV and DVD player.



COLD STORAGE
Available storage enhancements include a portable refrigerator/freezer or convenient slideout storage box (NA 40TD).



LADDER The available folding ladder slides neatly into an easily accessible storage sleeve.



SERVICE CENTER The QuickPort® service connection hatch is fast and simple, allowing the bay door to close with hookups connected. The QuickConnect® coupling valve allows for quick, clean hookups and has its own holster.



EVOLUTION[®]

CHASSIS

WEB



THE LEADER AT EVERY TURN™



EVOLUTION CHASSIS

Experience the Evolution. Winnebago Industries engineers worked closely with Freightliner to create the Evolution Chassis for the 2007 Horizon. Designed specifically for this motor home application, Evolution represents the next generation of diesel pusher technology with one-piece formed-steel chassis rails that are 25% thicker than traditional raised rails. They offer added strength and performance without the

restrictive bulk and weight of stacked rails. Formed rails also provide increased midsection storage, better weight distribution and improved floorplan flexibility. Evolution delivers a premium driving experience with a powerful 400-hp 8.9L Cummins® ISL engine, independent front suspension and up to a 60° wheel cut for exceptional luxury performance.

GET MORE WITH THE EVOLUTION CHASSIS:

- Allison® 3000 MH 6-speed automatic transmission with touchpad control
- 10,000-pound hitch with Tow Power seven-pin connector⁶
- Standard engine compression brake for longer brake life
- NeWay® rear air suspension for improved ride and handling
- 3-year/50,000-mile warranty (including towing and roadside assistance) and over 350 North American service locations, 50 Freightliner RV Oasis locations and a 24/7 helpline



Carpet

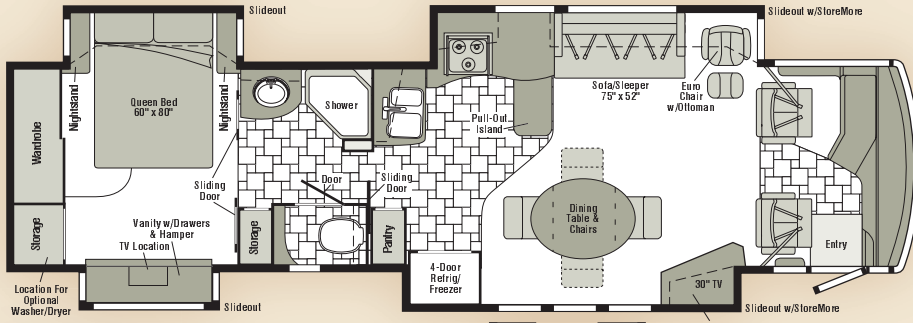


Ceramic Tile Floorcovering

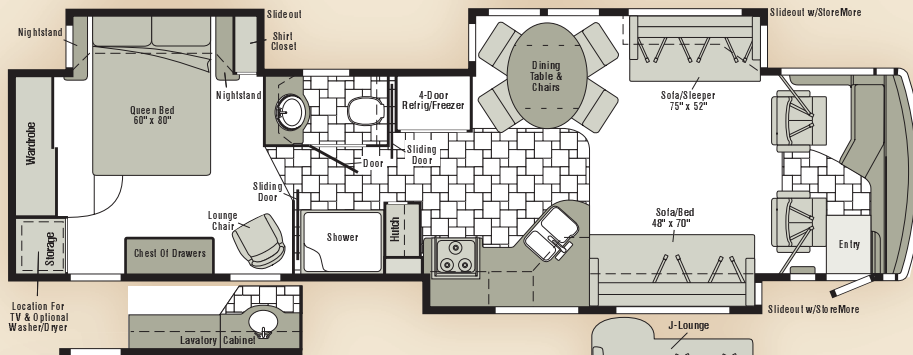
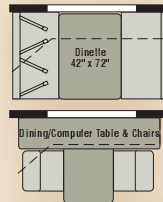
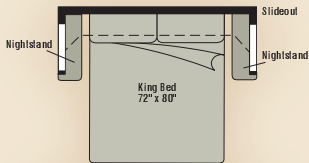
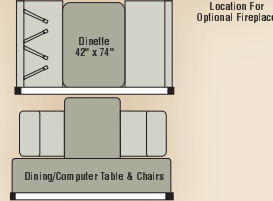


Seat Belts

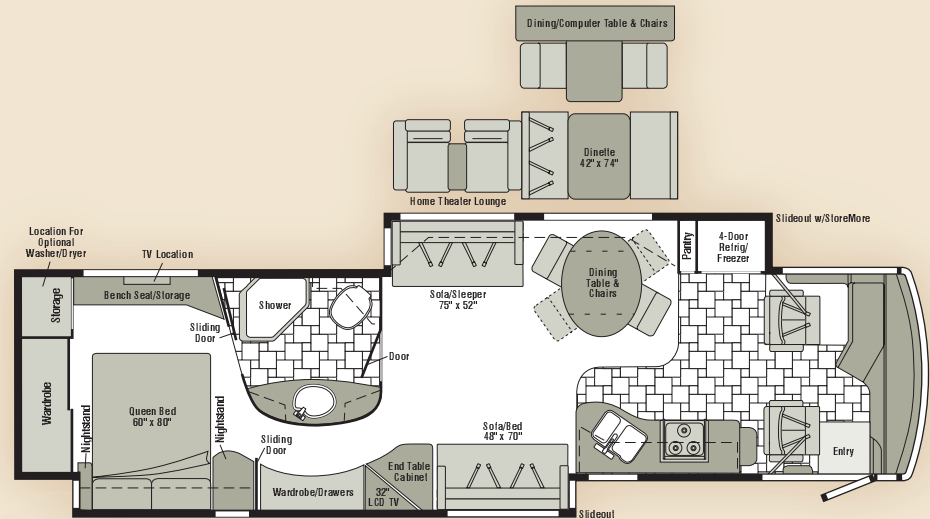
Note: Dimensions shown are for sleeping space only and may vary due to styling differences. Dashed lines denote overhead storage areas.



40FD



40KD



40TD
NEW

WEIGHTS & MEASURES	40FD	40KD	40TD NEW
Length	39'10"	39'10"	39'10"
Exterior Height	12'4"	12'4"	12'4"
Exterior Width²	8'5.5"	8'5.5"	8'5.5"
Exterior Storage³ (cu. ft.)	151.2	141.9	138.8
Awning Length	20'	20'	20'
Interior Height	7'2.5"	7'2.5"	7'2.5"
Interior Width	8'0.5"	8'0.5"	8'0.5"
Freshwater Capacity w/Heater⁴ (gal.)	108	108	107
Holding Tank Capacity - Black/Gray⁴ (gal.)	57/72	57/72	52/86
LP Capacity⁵ (gal.)	31	31	31
Fuel Capacity (gal.)	100	100	100
GCWR⁶ (lbs.)	44,320	44,320	44,320
GVWR (lbs.)	34,320	34,320	34,320
GAWR - Front (lbs.)	14,320	14,320	14,320
GAWR - Rear (lbs.)	20,000	20,000	20,000
Wheelbase	267"	267"	267"

AUTOMOTIVE/CHASSIS	40FD	40KD	40TD
Freightliner Evolution Chassis – Cummins [®] ISL 8.9L turbo-charged diesel, 400-hp, side radiator, Allison [®] 6-speed electronic 3000 MH transmission, ZF-IFS front air suspension, NeWay rear air suspension, 160-amp. alternator, 4-wheel ABS, engine compression brake	S	S	S
Air Accessory Manifold quick connect, 50' air hose, pressure gauge, manual air shutoff, Battery Disconnect chassis, manual, Leveling Jacks HWH [®] hydraulic, w/3-way switching system, Trailer Hitch[®] 10,000-lb. drawbar/500 lbs. maximum vertical tongue weight & wiring, 7-pin connector, Wheels stylized aluminum	S	S	S

CAB AREA & DRIVER CONVENIENCES	40FD	40KD	40TD
Cab Seats (UltraLeather™) armrests, adj. lumbar support, multiadjustable slide/recline & swivel, Cab Seats 6-way, power-assist, driver & passenger, Compass electronic w/outdoor thermometer, Console Center Cabinet , Cruise Control , Defroster Fans auxiliary, built-in, 2-speed w/ instrument panel switch, Compression Brake Control , Floor Mat (Driver) carpet, Freightliner Information Center see Freightliner's Owner's Manual, Map Lights , Monitor System rearview, color, single camera & 1-way audio, Sony [®] Power Door Lock keyless entry w/remote, Powerpoints 12-volt DC, Steering Wheel custom, SmartWheel™ w/power-assist, tilt, Sunvisors powered, Trim Panels driver & passenger, Window (Driver) full-slider w/screen, dual-glazed, Window (Passenger) partial slider w/screen, dual-glazed, Windshield Wipers intermittent, radial arms	S	S	S

CAB AREA & DRIVER CONVENIENCES	40FD	40KD	40TD
GPS Navigation System , Spotlight roof-mounted w/ wireless remote, chrome, Video Camera System side-mounted cameras, turn signal activated	0	0	0

ENTERTAINMENT	40FD	40KD	40TD
Entertainment Center (Exterior) AM/FM radio, CD player w/remote, DC receptacle, AC duplex receptacle, TV jack, radio antenna, speakers (2), lockable compartment, Home Theater Sound System DVD/VCR, receiver, amplifier, speakers (5), subwoofer, Sony, RV Radio[®] (Cab) AM/FM/stereo/CD, remotes, roof-mounted flexible rubber antenna, speakers (4), weather band, Radio Power Switch main/auxiliary battery, Satellite System Ready , Stereo System (Bedroom) AM/FM CD/DVD player, headphone jack, aux. input (plays MP3), recessed cube speakers (2), bass speaker, alarm clock, Telephone input & interior jacks, TV 20" AC color, bedroom, LCD, stereo w/remote, remote extenders, Sharp [®] , TV Enhancement Package antenna (amplified), interior jack(s), coax wiring, cable input, exterior jack, portable satellite dish hookup, Video Selection System	S	S	S
C.B. Radio Cobra [®] , antenna, ant. lead, 12-volt DC power supply, Compact 10-Disc Changer w/remote, Satellite Dish Antenna RV digital, power, Satellite Dish RV digital, in-motion, King-Dome [®] Satellite Radio antenna, docking port, receiver, Sirius, includes 6-month paid subscription (NA in Canada)	0	0	0

ENTERTAINMENT	40FD	40KD	40TD
Entertainment Center w/TV & DVD (Exterior) AM/FM radio, CD/DVD w/remote, DC receptacle, AC duplex receptacle, TV 20" LCD AC color stereo w/remote, alarm, headphone jack, aux. input (plays MP3), speakers (2), bass speaker, tv jack, remote extender, radio antenna	0	0	0
TV 27" AC color, front cabinet, flat-face, stereo w/remote, Sony			S
TV 30" AC color, front slideout entertainment center, high definition, flat-face, stereo w/remote, Sony	S		
TV 32" AC color, LCD, high definition, stereo w/remote, Sony		0	S
TV 37" AC color, LCD, high definition, stereo w/remote	0		0
Fireplace electric	0		

INTERIOR	40FD	40KD	40TD
Ceiling vinyl, Countertops solid surface Corian [®] , Curtain front wraparound, pleated w/pull cords, Light(s) wall lamp(s), Lights ceiling w/wall switches, Lights fluorescent, lounge, Lights reading, auxiliary, Roof Vent Shade Package , Shades pleated, day/night, blackout, Sliding Stepwell Cover Panel powered 12-volt, Windows dual-glazed/thermo-insulated/flush-mounted	S	S	S
Fan ceiling, lounge, Sunscreen Package windshield screen, windshield wiper covers, Vacuum Cleaner central, Dirt Devil [®] w/VacPan [®]	0	0	0

FURNITURE	40FD	40KD	40TD
BenchMark™ Full Comfort Dinette (UltraLeather) w/access to storage below, child seat tether anchor, Multifunction Table & Chairs freestanding (2), folding (2), legless table w/solid-surface top, Sofa/Sleeper (UltraLeather 75" x 52") air mattress, throw pillows, Villa	0	0	0
Dining Table & Chairs freestanding (2), folding (2), oval freestanding table, Sofa/Sleeper (Fabric 75" x 52") air mattress, throw pillows, Villa	S	S	S
Entertainment Center hardwood	S		
J-Lounge (UltraLeather) access to storage below, throw pillows, Villa		0	
Lounge Chair (UltraLeather) Euro recliner w/ottoman	S		
Sofa (Fabric 48" x 70") access to storage below, throw pillows, removable armrests (2), Villa		S	S
Sofa (UltraLeather 48" x 70") access to storage below, throw pillows, removable armrests (2), Villa		0	0
Theater Seats (UltraLeather) recliner, dual footrest, beverage holders, flip-up cover, Villa			0

GALLEY	40FD	40KD	40TD
Faucet single-control w/pullout sprayer, Moen® Lights fluorescent, ceiling & undercabinet, Microwave/Convection Oven w/sensor cook feature & exterior vent range fan, residential 30", stainless steel, Sharp, Range Cover flush-mounted (countertop material), Range Top 3-burner w/storage below, recessed, sealed burners, stainless steel, Amana® Refrigerator/Freezer four-door w/ice maker, Titanium Touch stainless finish, Norcold® Roof Vent insulated w/rain sensor, shade, powered ventilator fan, Silverware Tray wood, Sink Covers (countertop material), Wastepaper Basket , Water Filtration System Everpure® separate faucet	S	S	S
Dishwasher drawer-style, stainless steel, Microwave/Speedcook Oven w/range fan, residential 30" stainless steel, G.E. Advantium™	0	0	0
Island Storage Bin large, roll-out		S	
Island Storage Cabinet w/solid-surface countertop		S	
Hutch decorative glass, adj. shelf		S	
Pantry	S		S

BATH	40FD	40KD	40TD
Cabinet lavatory, Cabinet linen, Cabinet medicine, Faucet (Shower) single-control handheld showerhead, Moen Posi-Temp®, Light shower, Light fluorescent, recessed, Lights makeup, Roof Vent insulated w/rain sensor, power, shade, private toilet room, Shower w/wall surround, granite look, Shower Door textured glass, Shower Seat	S	S	S

BEDROOM	40FD	40KD	40TD
Bed Sleep Number®, queen-size mattress by Select Comfort™, bedspread, pillows, throw pillows, Chair Rail , Headboard , Lights reading, halogen, Light decorative, ceiling w/dimmer, Powerpoint 12-volt DC receptacle, Wardrobe cedar lined	S	S	S
Fan ceiling	0	0	0
Bed Sleep Number king-size mattress by Select Comfort		0	

EXTERIOR	40FD	40KD	40TD
Air Horns roof-mounted, Awning Package patio w/wind sensor, sunscreen, remote, entrance door, electric, Awning Rails , Door entrance w/separate screen door w/roll-down screen, deadbolt lock, remote & touch pad entry, Entrance Door Step double, electric w/doorjamb switch, Ladder , Lights fog lamps, Light porch w/interior switch, Light under hood, Lights compartment, Light service, driver side, Lights auxiliary docking lamps, Locking Fuel-Fill Doors , Mirrors electric remote w/defrost, chrome head, full-body paint color arms, turn signal in mirror glass, Mud Guard full-width, Mudflaps rear, Receptacle AC duplex, Sidewall Skin 1-piece smooth fiberglass, high-gloss, Storage Compartments smooth valance panels, trunk liner, gas cylinders, TriMark® KeyOne™ System, paddle latch, lights, power locks, fold-up shelf, Storage Containers	S	S	S

EXTERIOR	40FD	40KD	40TD
Awnings window, Front Exterior Protective Mask , Refrigerator/Freezer portable, Spotlight roof-mounted w/wireless remote, chrome, Step Ladder folding	0	0	0
Storage Box slideout, upper shelf & fold-down door (NA 40FD w/refrigerator/freezer)	0	0	

SYSTEMS	40FD	40KD	40TD
HEATING/AC – Automotive Heater/Air Conditioner blend air system, Furnace 40,000 BTU, 2-stage, primary, Furnace 25,000 BTU, secondary, TrueAir® Residential Central Air Conditioning System w/heat pump	S	S	S
ELECTRICAL – Auxiliary Start Circuit, Batteries (Coach) deep-cycle (3), slideout tray, Battery (Coach) disconnect system, manual, Battery Charge Control automatic dual, Battery Chassis Charger/Maintainer , Electrical Distribution System AC & DC breaker panels, 50-amp., Generator 8,000-watt, Onan® Quiet Diesel™, slide, Generator/Shoreline Automatic Changeover Switch , Converter/Inverter/Charger DC/AC, 2,000-watt w/remote panel, OnePlace® Systems Center wall-mounted, PowerLine® energy management display, courtesy light, battery digital voltmeter, generator hourmeter gauge, generator start/stop switch, heating & AC thermostat, holding tank levels, LP tank level, solar panel/battery charger light, water heater switch, water heater on light & pilot indicator light, water pump switch, water tank level, Power Cord Reel powered, 12-volt DC, Power Cord 50-amp., Service Center (Electrical) cable inputs, power cord, QuickPort® service connection hatch, shoreline/generator automatic changeover switch, telephone input, TV/Satellite input, Solar Panel 10-watt battery charger	S	S	S
Generator Automatic Start System	0	0	0
PLUMBING/LP – Drain 1½" water tank, Service Center (Drainage/Water) drainage valves, holding tank flushing system, city water hookup/tank diverter fill, drain for freshwater system, exterior wash station w/pump switch, glove holder, monitor panel, soap dispenser, QuickPort service connection hatch, paper towel holder, portable satellite hookup, 20' sewer hose w/QuickConnect® coupling valve, Tank flushing system, black tank only, Tank holding, heated compartment, Tank LP, permanent mount w/gauge, remote, 12-volt shutoff, TrueLevel™ Holding Tank Monitoring System , Water Heater 10-gallon (16-gallon output) electronic ignition, LP gas/120 VAC w/motoraid, high output, Full Coach Water System Filtration Package replaceable filter, filter housing, wrench, Water System Winterization Package water heater bypass valve & siphon tube, Water Hookup city, Water Pump demand, Washer/Dryer Prep , Water Tank Fill pressurized city hookup w/diverter valve	S	S	S
Washer/Dryer Combination, Water Supply Hose w/reel	0	0	0

SAFETY	40FD	40KD	40TD
Assist Bars interior, Assist Handle exterior, lighted, acrylic, Bumpers front & rear, Child Seat Tether Anchor (dinette), Detectors/Alarms LP leak, smoke, carbon monoxide, Fire Extinguisher 10 BC, Ground Fault Interrupter , Lights high-mount brakelamps, Lights daytime running, Light(s) courtesy w/wall switch(es), Seat Belts integrated cab, 3-point adjustable, Seat Belts lap (in selected areas), Window escape, Windshield one-piece laminated safety glass	S	S	S
Security Vault (bedroom) key lockable	0	0	0

WARRANTY ⁷	40FD	40KD	40TD
12-month/15,000-mile basic limited warranty , ⁸ 36-month/36,000-mile limited warranty on structure , ⁸ 10-year limited parts & labor warranty on roof skin ⁸	S	S	S

- The height of each model is measured to the top of the tallest standard feature and is based on the curb weight of a typically equipped unit. The actual height of your vehicle may vary by several inches depending on chassis or equipment variations. Please contact your dealer for further information.
- Horizon floorplans feature a wide-body design – over 96". In making your purchase decision, you should be aware that some states restrict access on some or all state roads to 96" in body width. Before making your purchase decision, you should confirm the road usage laws in the states of interest to you.
- The load capacity of your motor home is designated by weight, not by volume, so you cannot necessarily use all available space when loading your motor home.
- Capacities are based on measurements prior to tank installation. Slight capacity variations can result due to installation applications.
- Capacities shown are tank manufacturer's listed water capacity (W.C.). Actual filled LP capacity is 80% of listing due to overfilling prevention device on tank.
- Actual towing capacity is dependent on your particular loading and towing circumstances, which includes the GVWR, GAWR, and GCWR as well as adequate trailer brakes. Please refer to the Operator's Manual of your vehicle for further towing information.
- See separate chassis warranty.
- See your dealer for complete warranty information.

NA Not Available

S Standard

O Optional

Not all items available in combination. See dealer for details.

Winnebago Industries® continuing program of product improvement makes specifications, equipment, model availability, and prices subject to change without notice. Comparisons to other motor homes are based on the most recent information available.

INTERIOR DECOR

Choose from three fabric selections and three cabinet wood choices with hidden hinges.

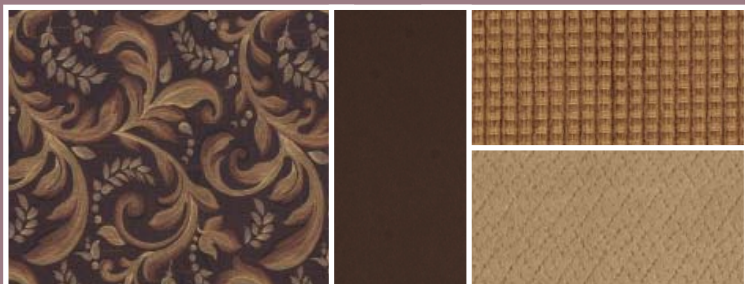
SOFA	ULTRA LEATHER	ACCENT
		CARPET



Sonoma Valley w/available Ragweed UltraLeather™



Venetian w/available Briarwood UltraLeather



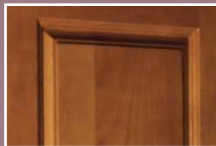
Twilight w/available Truffle UltraLeather



Concert Cherry



Washed Maple



Honey Cherry

FULL-BODY PAINT



Chestnut



Pearlstone



Hot Charcoal

Welcome to Winnebago Industries, Inc.
<http://www.winnebagoind.com/>

WINNEBAGO PRODUCTS RESOURCES COMPANY CLUBS/EVENTS CONTACT DEALERS ONLY WEB Search & Key Features

Select a category from above.

Popular Links
→ Winnebago RVs
→ Itasca RVs
→ Key Features
→ Dealer Locator



The 2007 coaches have arrived.

WINNEBAGO INDUSTRIES' FEATURED PRODUCTS

Introducing the 2007 Itasca Impulse™

TRUEAIR™
Cools 48% Faster, White 10% Quicker!

SIRIUS™
Available Sirius Satellite Radio, NA Canada.

WINNEBAGOIND.COM Visit us on the web for more info on all of our motor homes and a host of web-exclusive content.

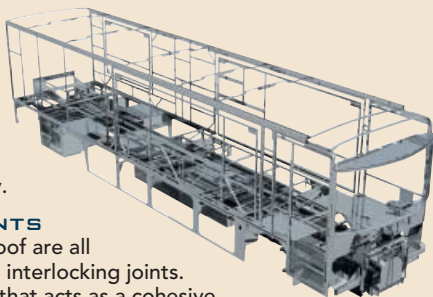


**BUILT BY WINNEBAGO INDUSTRIES.
BUILT TO LAST.**

Itasca motor homes are built by Winnebago Industries, the company that defined motor homes. The company that built its reputation on quality construction. The company that transformed the motor home concept into a way of life.

Today, Winnebago Industries brings that reputation for quality and its 48-year history of motor home innovation to the design and construction of every motor home. It's all a part of SuperStructure® our exclusive system of proprietary structural components that instills each motor home with improved strength and durability.

SOLID FOUNDATION Steel and aluminum truss work provides a solid, flat foundation for floors and sidewalls. Winnebago Industries engineers also take special care to distribute the weight of components to ensure proper handling and stability.



INTERLOCKING JOINTS
The floors, sidewalls and roof are all integrally connected using interlocking joints. This creates a coach body that acts as a cohesive unit for improved strength and durability.



E-COATING Winnebago Industries employs an exclusive 12-stage automotive-style dip tank process to apply an advanced electrodeposition coating on critical steel components for unmatched corrosion protection.



THERMO-PANEL® SIDEWALLS Invented by Winnebago Industries, Thermo-Panel construction combines a fiberglass panel, high-density, block-foam insulation and aluminum support structures to create some of the most durable, lightweight sidewalls in the industry.

ATTENTION TO DETAIL Whether it's sending every coach through a high-pressure water tunnel to check for leaks or labeling each individual wire and bar-coding parts to save time and frustration during service, Winnebago Industries considers every detail to ensure your Itasca motor home provides you with years of pleasure.

STRONG AS STEEL Appliances are secured directly to embedded steel plates for added safety. Windshields are also mounted in steel with an automotive-style sealant; lesser designs use a rubber gasket to mount the windshield in fiberglass.



FIBERGLASS ROOF The Horizon features a crowned, one-piece fiberglass roof, backed with a 10-year limited parts-and-labor roof skin warranty. Fiberglass offers superior strength, attractiveness and durability over the rubber roofs found on many competitive models which can chalk, streak and degrade over time. Fiberglass also provides increased puncture and tear resistance.



TAKE A TOUR We're proud of our process, state-of-the-art facilities and the people who make Winnebago Industries number one. We invite you to visit our factory in Forest City, Iowa, for a first-hand look at the dedication and technology behind every motor home we build.



RECOGNIZED QUALITY The Recreation Vehicle Dealer Association annually rates RV manufacturers and awards the Quality Circle award to manufacturers who provide exceptional products, service and support. Winnebago Industries is proud to be the only manufacturer to receive this award every year since its inception.



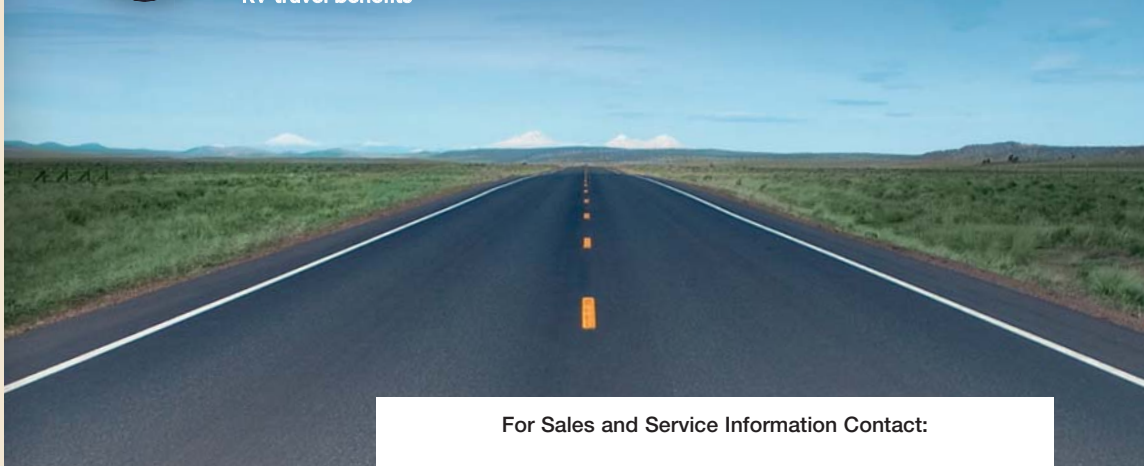
COMMITTED TO SERVICE We back our motor homes with the industry's best service after the sale.

- 12-month/15,000-mile basic limited warranty
- 36-month/36,000-mile limited warranty on structure
- Standard 10-year limited parts-and-labor roof skin warranty
- Complimentary 24-hour roadside assistance program
- TripSaver Fast Track Parts. TripSaver guarantees that in-stock warranty parts ship directly to your dealer within 24 hours.
- National dealer service network



WIT CLUB Itasca owners are like family. Joining the Winnebago-Itasca Travelers is a great way to meet and travel with other Itasca enthusiasts. Members enjoy:

- Caravans and rallies
- Local and state group activities
- RV travel benefits



For Sales and Service Information Contact:



Built proudly by



NYSE listing: WGO

©2006 Winnebago Industries, Inc.

Printed in USA

Seat belts are your most important hookup. Always buckle up.