

 **CAMBRIA**

2007



 **SMARTSPACE™**
WEB

HIT THE ROAD.

Great looks, impressive handling and incredible livability all contribute to the growing popularity of the Itasca Cambria®. Inside you'll find residential features like a contemporary lounge chair (26A) and an available UltraLeather™ furniture package (shown here). The 29H features a unique rear bed/sofa combination that creates a highly functional and flexible living space without

sacrificing comfort. It's part of our SmartSpace™ design philosophy that makes the most of interior space with innovative, user-friendly features that increase functionality. The 2007 Cambria delivers full-size RV comfort and fun in an easy-to-drive package.

FULLY LOADED

You'll feel right at home in a motor home loaded with residential features like day/night pleated shades and thermostat-controlled heating and air conditioning. The Cambria is furnished with premium Stitchcraft furniture, including the moveable, hoop-base lounge chair in the 26A.

The living area furniture can be upgraded with the UltraLeather package for added class and comfort, including the sofa on the 23D and 29H that converts into a comfortable bed. It's a great place to enjoy the 24" Sony® flat-face TV and available DVD player.

Cooks will appreciate the space-saving features in the galley, especially the slideout pantry (NA 29H) and double-bowl sink with cover. A water filtration system is available for clear, filtered drinking water.

Other thoughtful touches include a skylight in the shower, vinyl floorcovering in the galley and bath areas, and a child safety-seat tether in the dinette.

The available electric/LP water heater includes EMS (Energy Management System). This monitors the microwave and electric water heater usage and temporarily postpones operation of the water heater while the microwave is running to minimize the possibility of tripping a campground circuit breaker.

WEB Select a Key Feature

The **WEB** icon designates a Winnebago Industries Key Feature. For further in-depth information and photos, use the drop-down menu or click on the 'Key Features' page at winnebagoind.com.



ENTERTAINMENT CENTER Enhance movies and music with the available Deluxe Sound System with 5-channel QSurround™ sound and an available inverter that powers the entertainment center from the house batteries when 110-volt power is not available.



GALLEY The fully equipped galley includes a microwave/convection oven and your choice of a range top with storage below or an available range/oven.



FULL-EXTENSION DRAWER SLIDES Drawers open fully for easy access to stored items.



DINETTE The dinette converts easily into a comfortable bed. A U-shaped dinette is standard in the 26A.



WARDROBE You'll find plenty of storage space in this wardrobe and the adjoining chest of drawers in the 29H. The available 14" LCD TV swivels against the wall when not in use.

FULL-FEATURED FLOORPLANS

SmartSpace design elements abound in the 29H. It's a great RV for entertaining guests, with two spacious slideouts and two separate lounge areas for relaxing and watching TV.

The front entertainment center includes a 24" TV and an available Deluxe Sound System with 5-channel QSurround™ sound. A 14" LCD flat-panel TV can be added to the rear lounge/bedroom area. This unique layout also incorporates a large, fully enclosed rear bath, full-size wardrobe and a spacious chest of drawers.



SOFA/BED Relax in front of the TV by day and sleep comfortably at night. The sofa/bed converts quickly and easily from a couch to a lounge to a queen-size bed.

GRAB THE WHEEL

You'll be surprised how pleasurable driving a motor home can be once you slide behind the wheel of a Cambria. The ride is especially comfortable in the reclining, high-back cab seats, which can be upgraded to UltraLeather for an even more luxurious ride.

The RV Radio® includes AM/FM stereo, CD player, weather band and large, easy-to-use buttons and knobs. It also comes with a steering wheel remote and handheld remote for control throughout the coach. Upgrade your RV Radio with the available Sirius® Satellite radio* package. Sirius brings you 120 channels of crystal clear programming and a free six-month subscription. A radio power switch allows you to run the dash radio from the auxiliary battery when parked.

Leveling is easy when you choose the available hydraulic leveling jacks. A touchpad just inside the entrance door sets your Cambria on an even plane at the touch of a button.

*Sirius Satellite radio not available in Canada.



DASH Driver controls such as power windows and door locks are positioned for an improved driving experience. An available Regal Burl dash appliqué gives the Cambria a more distinct appearance.



REARVIEW MONITOR The available rearview monitor mounts neatly between the sunvisors for improved visibility.



EXTERIOR ENTERTAINMENT CENTER Enjoy your favorite music with the available exterior entertainment center. It features an AM/FM stereo, CD player, 12-volt DC powerpoint, TV jack, 110-volt outlet, speakers and a removable table.



WEB SMART STORAGE Cambria maximizes exterior storage for easy access to all your gear.



WEB TRUELEVEL Eliminate the guesswork when it comes to tank levels with our exclusive TrueLevel™ holding tank monitoring system. It incorporates detector cells to read liquid levels from outside the tank. No probes means no more corrosion or clogging, just accurate readings time after time.



Carpet

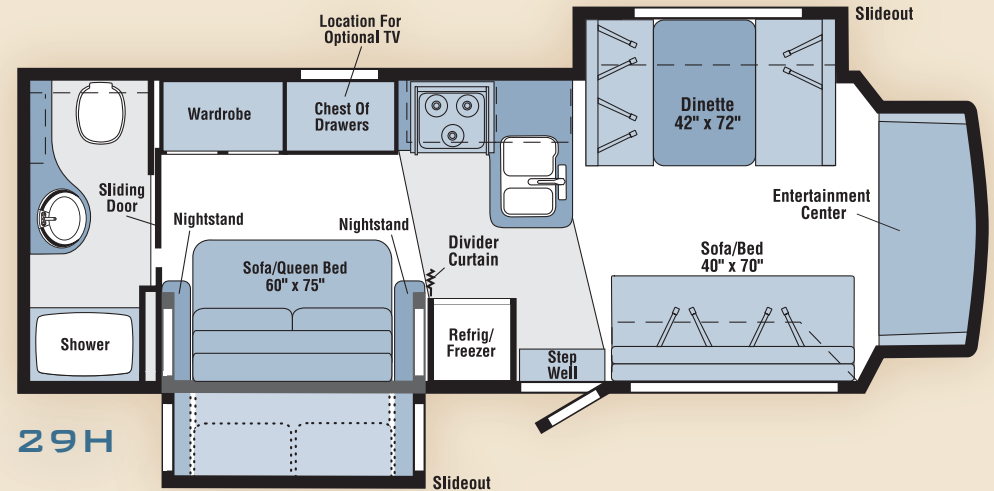
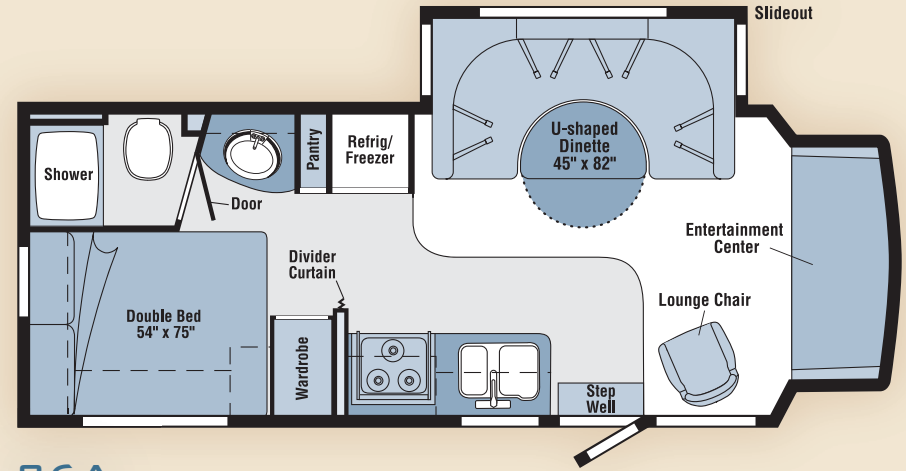
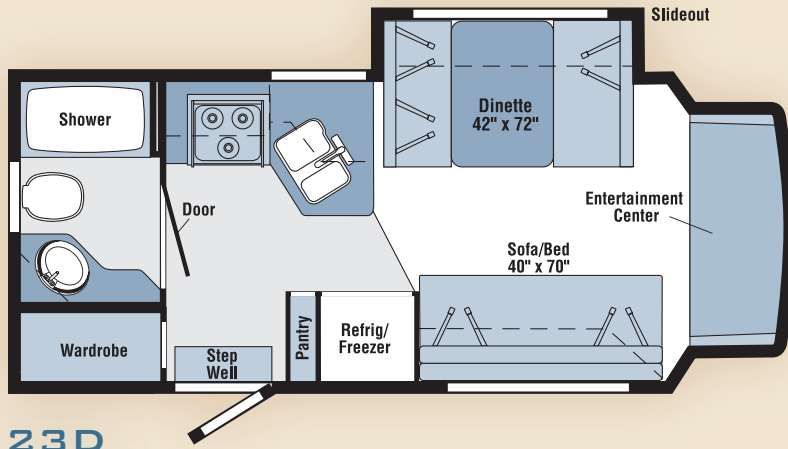


Vinyl Floorcovering



Seat Belts

Note: Dimensions shown are for sleeping space only and may vary due to styling differences. Dashed lines denote overhead storage areas.



WEIGHTS & MEASURES	23D	26A	29H
Length	23'8"	26'7"	29'11"
Exterior Height¹	10'3"	10'6"	10'5"
Exterior Width	7'11"	7'11"	7'11"
Exterior Storage² (cu. ft.)	19.2	43	38.3
Awning Length	13'	17'	19'
Interior Height	6'5"	6'5"	6'5"
Interior Width	7'8"	7'8"	7'8"
Freshwater Capacity w/Heater³ (gal.)	33	43	39
Holding Tank Capacity - Black/Gray³ (gal.)	23/24	29/29	36/29
LP Capacity⁴ (gal.)	18	18	18
Fuel Capacity (gal.)	55	55	55
GCWR⁵ (lbs.)	18,500 ^A / 20,000 ^B	20,000 ^B	20,000 ^B
GVWR (lbs.)	11,500 ^A / 14,050 ^B	14,050 ^B	14,050 ^B
GAWR - Front (lbs.)	4,600 ^A / 4,600 ^B	4,600 ^B	4,600 ^B
GAWR - Rear (lbs.)	7,800 ^A / 9,450 ^B	9,450 ^B	9,450 ^B
Wheelbase	158" ^A / 158" ^B	182" ^B	220" ^B

AUTOMOTIVE/CHASSIS	23D	26A	29H
A Ford® E350 Chassis – 6.8L Super-Duty V10 SOHC Triton® engine, 305-hp, automatic transmission, TorqShift™, 5-speed w/tow/haul feature, 4-wheel ABS, 130-amp. alternator, dual air bags (NA w/Full-body Paint)	S		
B Ford E450 Chassis – 6.8L Super-Duty V10 SOHC Triton engine, 305-hp, automatic transmission, TorqShift, 5-speed w/tow/haul feature, 4-wheel ABS, 130-amp. alternator, dual air bags	0	S	S
Trailer Hitch⁵ 5,000-lb. drawbar/350 lbs. maximum vertical tongue weight & wiring, 7-pin connector, Wheel Liners stainless steel	S	S	S
Air Springs auxiliary rear, Wheels stylized aluminum	0	0	0

CAB AREA & DRIVER CONVENIENCES	23D	26A	29H
Beverage Holder, Cab Seats (Fabric) armrest, fixed lumbar support, multiadjustable slide/recline, Cruise Control, Curtain cab divider, Floor Mats rubber, driver & passenger, Power Door Locks driver/passenger/main entry, Power Cab Windows, Powerpoint 12-volt DC/cigarette lighter, Steering Wheel tilt w/power-assist, Sunvisors, Trim Panels driver & passenger doors	S	S	S
Cab Seats UltraLeather™, Instrument Panel appliqué, Regal Burl, Leveling Jacks (front & rear) HWH® hydraulic, automatic, Monitor System rearview w/single camera, monitor, Audiovox®	0	0	0

ENTERTAINMENT	23D	26A	29H
RV Radio® (Cab) AM/FM/Stereo/CD player w/weather band, speakers (4) w/remotes, Radio Power Switch main/auxiliary battery, TV 24" flat-face, color AC, stereo w/remote, Sony®, TV Enhancement Package 12-volt DC powerpoint, interior jack, coax wiring, cable input	S	S	S
DVD w/remote, 12-volt DC, Entertainment Center (Exterior) AM/FM radio w/CD player & remote, DC receptacle, AC duplex receptacle, TV jack, radio antenna, speakers (2), lockable compartment, removable TV table, Satellite Radio Sirius®, includes 6-month paid subscription (NA in Canada), Satellite Dish Antenna RV digital, manual, Satellite System King-Dome®, RV digital, in-motion w/elevation sensing unit, Deluxe Sound System w/5-channel QSurrround™ sound, amplifier, speaker system	0	0	0
TV 14" LCD stereo w/remote, 12-volt DC			0

INTERIOR	23D	26A	29H
Ceiling fabric, Countertops laminate, Lights ceiling, incandescent w/wall switches, Light(s) decorative dinette area, Powerpoint 12-volt DC, Shades day/night pleated (lounge, dinette & bedroom), Mini Blinds (galley & bath), Roof Vents nonpowered, lounge, powered, bath	S	S	S
Roof Vent powered ventilator fan, lounge, Windows dual-glazed/thermo-insulated	0	0	0
Cupholder(s)	S	S	
Lights halogen, Lights reading			S

FURNITURE	23D	26A	29H
Dinette w/access to storage below, Sofa w/throw pillow	S		S
Chair lounge, hoop-base, swivel/glider, Dinette U-shaped w/access to storage below, slideout baskets		S	
UltraLeather Furniture Package cab seats, dinette, sofa (NA 26A), lounge chair (26A only)	0	0	0

GALLEY	23D	26A	29H
Faucet single-control, Moen®, Microwave/Convection Oven Sharp®, silver, Range Top 3-burner, drawer below, Range Hood vented w/light & fan, Refrigerator/Freezer large double-door, 2-way, Norcold®	S	S	S
Countertop flip-up extension		S	
Pantry	S	S	
Range 3-burner w/oven, drawer below, Magic Chef®, Water Filtration System	0	0	0

BATH	23D	26A	29H
Cabinet lavatory, Cabinet(s) medicine, Faucet shower, dual-control w/flexible showerhead, Faucet lavatory, single-control, Light shower, Shower Door retractable, Skylight	S	S	S

BEDROOM	23D	26A	29H
Bed double, removable bed cover, pillows, pillow shams, throw pillow		S	
Sofa/Bed queen, split mattress, bed cover			S

EXTERIOR	23D	26A	29H
Awning Rails w/rain gutters, Door entrance w/separate screen door, deadbolt lock, Entrance Door Step single, manual, Ladder, Light porch w/interior switch, Mirrors plate-mounted, manual adjust w/convex (NA w/Full-body Paint), Mudflaps rear, Receptacle AC duplex, Running Boards fiberglass w/front wheel lips, Sidewall Skin 1-piece smooth fiberglass, Storage Compartments w/trunk liner	S	S	S
Awning patio, metal wrap, Entrance Door Step single, electric w/doorjamb switch, Mirrors plate-mounted, electric/remote w/defroster, white (silver w/Full-body Paint only)	0	0	0

SYSTEMS	23D	26A	29H
HEATING/AC – Automotive Heater/Air Conditioner blend air system, Air Conditioner (Roof) 13,500 BTU, ceiling-ducted w/wall thermostat	S	S	S
AC Heat Pump	0	0	0
Furnace 25,000 BTU, low-profile	S		
Furnace 30,000 BTU, low-profile		S	S

SYSTEMS	23D	26A	29H
ELECTRICAL – Auxiliary Start Circuit, Battery (1) (Coach) Group 24 deep-cycle, Battery (Coach) disconnect system, Dual Battery charge control (automatic), Electrical Distribution System AC breaker panels, DC automotive fuses, 45-amp. converter/charger, Generator Prep Kit, Monitor Panel battery condition gauge, generator hourmeter gauge, generator start/stop switch, holding tank levels, LP tank level, water heater lights, water heater switch, water pump switch, water tank level, Power Cord 30-amp. 25' Service Center (Electrical) cable input, power cord, portable satellite dish hookup	S	S	S
Batteries (2) Group 24 deep-cycle, Generator 4,000-watt Onan® MicroQuiet™, gas, Inverter DC/AC, 300-watt,	0	0	0
PLUMBING/LP – Drain water tank, 1" brass ball valve w/lever, Service Compartment (Drainage/Water) pressurized city water hookup/tank diverter fill, drainage valves, 10' sewer hose, Tank holding, heated compartment (26A & 29H only), Tank LP, permanent mount w/gauge, TrueLevel™ holding tank monitoring system, Water Heater 6-gallon electronic ignition, LP gas, Water System Winterization Package water heater bypass valve & siphon tube, Water Pump demand, permanent magnet motor w/diaphragm	S	S	S
Drainage System heated, electric (NA Canada)	0		
Exterior Wash Station w/lighted pump switch, Water Heater 6-gallon electronic ignition, 120 VAC/LP gas w/EMS (Energy Management System)	0	0	0

SAFETY	23D	26A	29H
Airbags driver & passenger, Assist Bar interior, Assist Handle exterior, soft-touch, Bumpers front & rear, Child Seat Tether Anchor, Courtesy Light(s) interior, Detectors/Alarms LP leak, smoke, carbon monoxide, Fire Extinguisher 10 BC, Ground Fault Interrupter, Lights high-mount brakelamps, Seat Belts cab, 3-point adjustable, Seat Belts lap (in selected areas), Window escape	S	S	S

WARRANTY ⁶	23D	26A	29H
12-month/15,000-mile basic limited warranty⁷, 36-month/36,000-mile limited warranty on structure⁷, 10-year limited parts & labor warranty on roof skin⁷	S	S	S

- The height of each model is measured to the top of the tallest standard feature and is based on the curb weight of a typically equipped unit. The actual height of your vehicle may vary by several inches depending on chassis or equipment variations. Please contact your dealer for further information.
- The load capacity of your motor home is designated by weight, not by volume, so you cannot necessarily use all available space when loading your motor home.
- Capacities are based on measurements prior to tank installation. Slight capacity variations can result due to installation applications.
- Capacities shown are tank manufacturer's listed water capacity (W.C.). Actual filled LP capacity is 80% of listing due to overfilling prevention device on tank.
- Actual towing capacity is dependent on your particular loading and towing circumstances which includes the GVWR, GAWR, and GCWR as well as adequate trailer brakes. Please refer to the Operator's Manual of your vehicle for further towing information.
- See separate chassis warranty.
- See your dealer for complete warranty information.

NA Not Available

S Standard

0 Optional

Not all items available in combination. See dealer for details.

Winnebago Industries® continuing program of product improvement makes specifications, equipment, model availability, and prices subject to change without notice. Comparisons to other motor homes are based on the most recent information available at printing.

STANDARD GRAPHICS



Metallic Gold



Catalina Blue Metallic

AVAILABLE FULL-BODY PAINT



Moonlight



Nutmeg

Welcome to Winnebago Industries, Inc.

<http://www.winnebagoind.com/>

PRODUCTS RESOURCES COMPANY CLUBS-EVENTS CONTACT DEALERS ONLY [WEB Select a Key Feature](#)

Select a category from above.

Popular Links

- Winnebago RVs
- Bassa RVs
- Key Features
- Dealer Locator



The 2007 coaches have arrived.

WINNEBAGO INDUSTRIES' FEATURED PRODUCTS

Introducing the 2007 Horse Impulse™

TRUEAIR™
Cools 48% Faster,
White 10% Quicker!

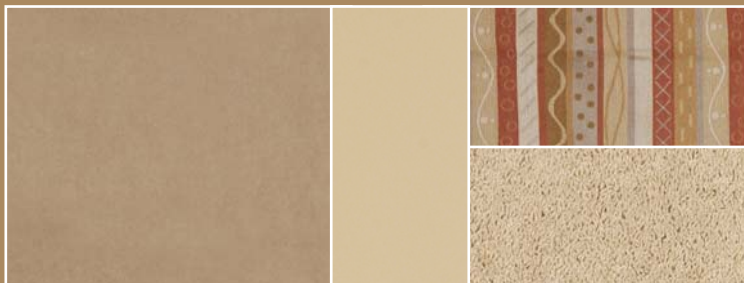
SIRIUS
Available Sirius Satellite Radio.
MA Canada.

WINNEBAGOIND.COM Visit us on the web for more info on all of our motor homes and a host of web-exclusive content.

INTERIOR DECOR

Choose from three fabric selections and two wood choices with chrome hardware.

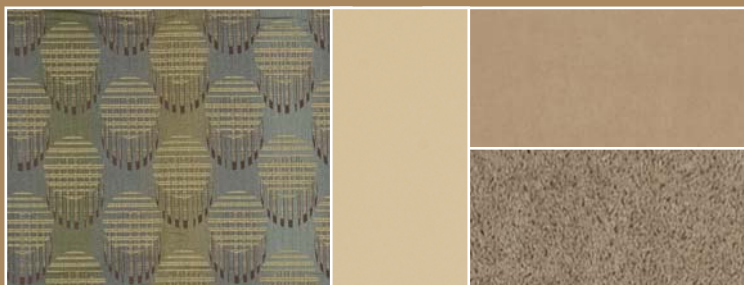
SOFA	ULTRA LEATHER	ACCENT
		CARPET



Mango Twist w/available Buff UltraLeather™



Night Mist w/available Papyrus UltraLeather



Nantucket Fog w/available Buff UltraLeather



Washed Maple



Sierra Maple

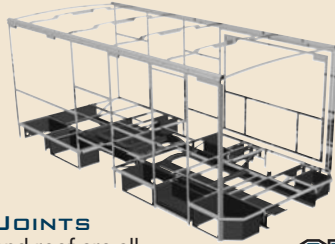


**BUILT BY WINNEBAGO INDUSTRIES.
BUILT TO LAST.**

Itasca motor homes are built by Winnebago Industries, the company that defined motor homes. The company that built its reputation on quality construction. The company that transformed the motor home concept into a way of life.

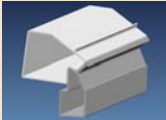
Today, Winnebago Industries brings that reputation for quality and its 48-year history of motor home innovation to the design and construction of every motor home. It's all a part of SuperStructure[®], our exclusive system of proprietary structural components that instills each motor home with improved strength and durability.

SOLID FOUNDATION Steel and aluminum truss work provides a solid, flat foundation for floors and sidewalls. Winnebago Industries engineers also take special care to distribute the weight of components to ensure proper handling and stability.



INTERLOCKING JOINTS

The floors, sidewalls and roof are all integrally connected using interlocking joints. This creates a coach body that acts as a cohesive unit for improved strength and durability.



WEB

E-COATING Winnebago Industries employs an exclusive 12-stage automotive-style dip tank process to apply an advanced electrodeposition coating on critical steel components for unmatched corrosion protection.

THERMO-PANEL[®] SIDEWALLS Invented by Winnebago Industries, Thermo-Panel construction combines a fiberglass panel, high-density, block-foam insulation and aluminum support structures to create some of the most durable, lightweight sidewalls in the industry.

ATTENTION TO DETAIL Whether it's sending every coach through a high-pressure water tunnel to check for leaks or labeling each individual wire and bar-coding parts to save time and frustration during service, Winnebago Industries considers every detail to ensure your Itasca motor home provides you with years of pleasure.

STRONG AS STEEL Appliances are secured directly to embedded steel plates for added safety.



TAKE A TOUR We're proud of our process, state-of-the-art facilities and the people who make Winnebago Industries number one. We invite you to visit our factory in Forest City, Iowa, for a first-hand look at the dedication and technology behind every motor home we build.



RECOGNIZED QUALITY The Recreation Vehicle Dealer Association annually rates RV manufacturers and awards the Quality Circle award to manufacturers who provide exceptional products, service and support. Winnebago Industries is proud to be the only manufacturer to receive this award every year since its inception.



COMMITTED TO SERVICE We back our motor homes with the industry's best service after the sale.

- 12-month/15,000-mile basic limited warranty
- 36-month/36,000-mile limited warranty on structure
- Standard 10-year limited parts-and-labor roof skin warranty
- Complimentary 24-hour roadside assistance program
- TripSaver Fast Track Parts. TripSaver guarantees that in-stock warranty parts ship directly to your dealer within 24 hours.
- National dealer service network



WIT CLUB Itasca owners are like family. Joining the Winnebago-Itasca Travelers is a great way to meet and travel with other Itasca enthusiasts. Members enjoy:

- Caravans and rallies
- Local and state group activities
- RV travel benefits



For Sales and Service Information Contact:



Built proudly by



NYSE listing: WGO

©2006 Winnebago Industries, Inc.

Printed in USA

Seat belts are your most important hookup. Always buckle up.



1-year-old Itasca fiberglass roof



1-year-old competitor's rubber roof

FIBERGLASS ROOF The Cambria features a crowned, one-piece fiberglass roof, backed with a 10-year limited parts-and-labor roof skin warranty. Fiberglass offers superior strength, attractiveness and durability over the rubber roofs found on many competitive models which can chalk, streak and degrade over time. Fiberglass also provides increased puncture and tear resistance.