

2007
WINNEBAGO
Access™



ACCESS



31C Harvest Moon with Sierra Maple

Introducing the 2007 Access.

The all-new Access is the latest addition to our best-selling Class C lineup. As you step inside this inviting coach, you'll quickly notice how our SmartSpace™ design elements make the most of available space, giving the Access a roomy, feature-loaded interior. The front entertainment center is available on most models and comes with a 27-inch TV and Video Selection System.

You can cook up a storm in the galley, which features a three-burner range top with a drawer below for storing your favorite pots and pans. The microwave comes in handy when you want to heat a quick meal; and the large, two-door refrigerator/freezer will keep everything cool. For even more cooking options, choose the available Magic Chef® three-burner range top with an oven. With your new Access, cleanup is a breeze, thanks to the vinyl flooring throughout the lounge and galley.

On the cover: 31C with Dark Blue Metallic.



31C

A New Kind of Motor Home.

The Access greets you with comfort and lots of amenities. From the contemporary fabrics to the beautiful cabinetry featuring vintage beadboard doors, full-extension drawer slides, satin nickel hardware and your choice of Sierra Maple or Portsmouth Oak finish, you'll feel at home no matter where you are. And with six unique floorplans to choose from, you're sure to find an Access that's just right for you.

Get a good night's rest on the standard queen-sized bed (not available on 22B). And there's plenty of storage space, thanks to the deep overhead cabinets and elegant wardrobe.

WEB Select a Key Feature

The **WEB** icon designates a Winnebago Industries' Key Feature. For further in-depth information and photos, use the Search Window or click on the Key Features page at winnebagoind.com.



31C Harvest Moon with Sierra Maple

Wardrobe



Entertainment Here.

Choose the available front entertainment center with storage cabinets. Upgrade to the Home Theater Sound System for a DVD player, amplifier, receiver, five recessed speakers and a subwoofer.



WEB **SMARTSPACE**

Innovative Space.

The Access features our SmartSpace design philosophy, which makes the most of interior living spaces! You'll find abundant storage in the overhead cabinets.



Sleep in Comfort.

There is no shortage of spacious sleeping accommodations. Every Access comes standard with a roomy overhead bunk.



Take Control

The well-designed cockpit wraps you in comfort and places controls for maximum driver convenience. And you'll appreciate automotive features such as power windows, dual air bags and power locks. Close at hand is an auxiliary start circuit, which provides energy from the auxiliary battery to start your engine if your chassis battery loses its charge. Select the available rearview monitor system for added convenience when backing up and maneuvering.



True Level.

Eliminate the guesswork when it comes to tank levels, with our exclusive TrueLevel™ holding tank monitoring system. It incorporates detector cells that determine liquid levels from outside the tank. No probes means no more corrosion or clogging, just accurate readings, time after time.



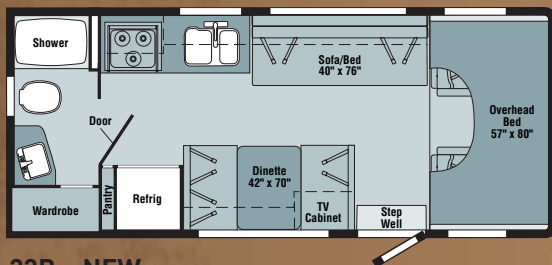
More Storage.

The Access has room for all your favorite gear because it features large rear exterior storage areas on the 24V, 26A, 28P, 29T and 31C (shown here).

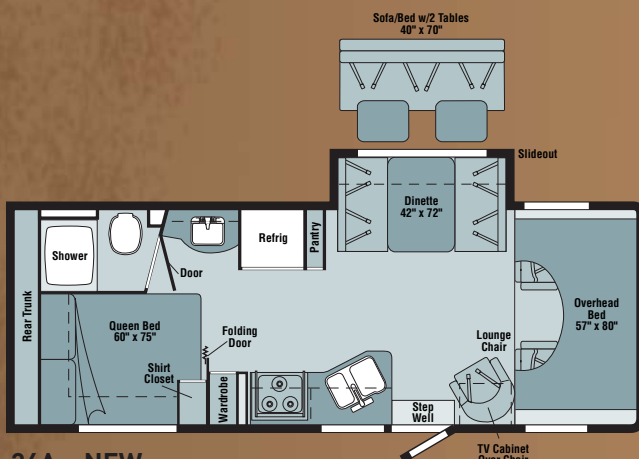


Multise.

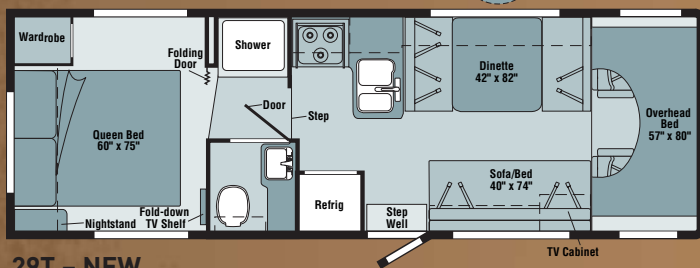
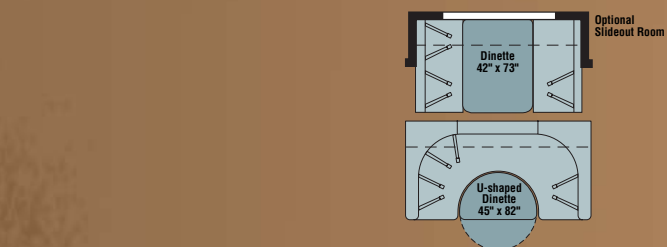
This adaptable storage space is great for damp or loose items or for chilling your beverages. There's even a drain plug to drain out water.



22B - NEW



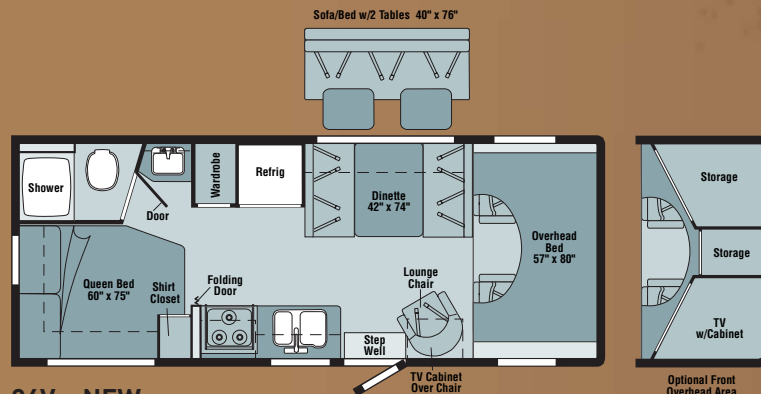
26A - NEW



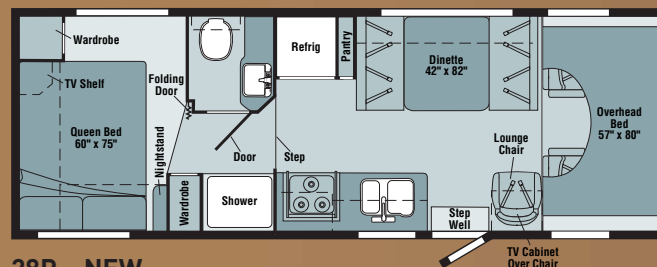
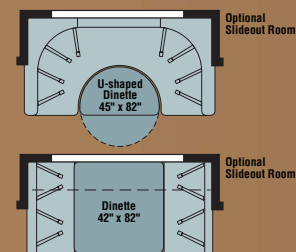
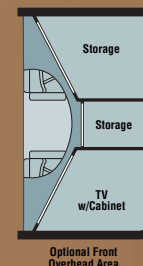
29T - NEW



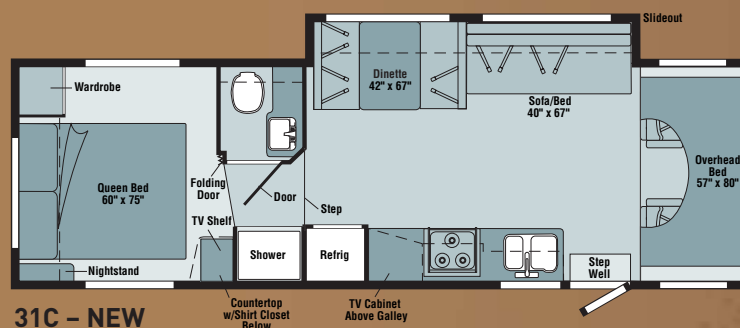
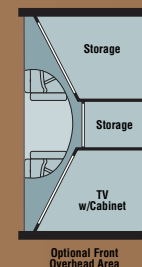
Note: Dimensions shown are for sleeping space only and may vary due to styling differences. Dashed lines denote overhead storage areas.



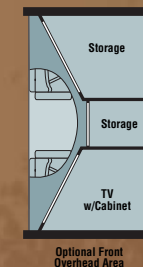
24V - NEW



28P - NEW

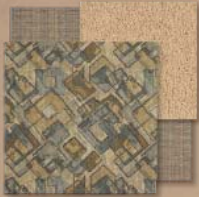


31C - NEW





Harvest Moon



Willowstone



Portsmouth Oak



Sierra Maple



A-Main Fabric
B-Carpet
C-Accent



Dark Blue Metallic



Available accessory package includes painted steel running boards, an exterior ladder and two rear storage bin covers (not available on the 22B, 24V and 26A).

WEIGHTS & MEASURES	22B NEW	24V NEW	26A NEW	28P NEW	29T NEW	31C NEW
Length	23'0" ^A	24'8" ^A /25'5" ^C	27'3" ^B /28" ^C	28'2" ^B /28'11" ^C	30' ^B /30'10" ^C	31'5" ^B /32'5" ^C
Exterior Height ¹	11'1" ^A	11'2" ^A /11'6" ^C	11'2" ^B /11'6" ^C	11'3" ^B /11'7" ^C	11'3" ^B /11'7" ^C	11'1" ^B /11'5" ^C
Exterior Width ²	8'5.5"	8'5.5"	8'5.5"	8'5.5"	8'5.5"	8'5.5"
Exterior Storage ³ (cu. ft.)	21	37.3	102*	82.7/78*	82.6/80.3*	92.7*
Awning Length	11'6"	11'6"	18'	16'	14'	16'
Interior Maximum Height	6'8"	6'8"	6'8"	6'10"	6'10"	6'10"
Interior Width	8'0"	8'0"	8'0"	8'0"	8'0"	8'0"
Freshwater Capacity w/Heater ⁴ (gal.)	33	41	41	41	41	41
Holding Tank Capacity – Black/Gray ⁴ (gal.)	32/39	39/29	39/29	41/41	41/41	41/41
LP Capacity ⁵ (gal.)	18	18	18	18	18	18
Fuel Capacity (gal.)	37 ^A	55	55	55	55	55
GCWR ⁶ (lbs.)	18,500 ^A	18,500 ^A /20,000 ^B /17,600 ^C	20,000 ^B /17,600 ^C	20,000 ^B /17,600 ^C	20,000 ^B /17,600 ^C	20,000 ^B /17,600 ^C
GVWR (lbs.)	10,700 ^A	11,500 ^A /14,050 ^B /14,050 ^C	14,050 ^B /14,050 ^C	14,050 ^B /14,050 ^C	14,050 ^B /14,050 ^C	14,050 ^B /14,050 ^C
GAWR – Front (lbs.)	4,600 ^A	4,600 ^A /4,600 ^B /4,600 ^C	4,600 ^B /4,600 ^C	4,600 ^B /4,600 ^C	4,600 ^B /4,600 ^C	4,600 ^B /4,600 ^C
GAWR – Rear (lbs.)	7,800 ^A	7,800 ^A /9,450 ^B /9,450 ^C	9,450 ^B /9,450 ^C	9,450 ^B /9,450 ^C	9,450 ^B /9,450 ^C	9,450 ^B /9,450 ^C
Wheelbase	138" ^A	158" ^A /158" ^B /159" ^C	168" ^B /169" ^C	182" ^B /183" ^C	190" ^B /191" ^C	220" ^B /221" ^C

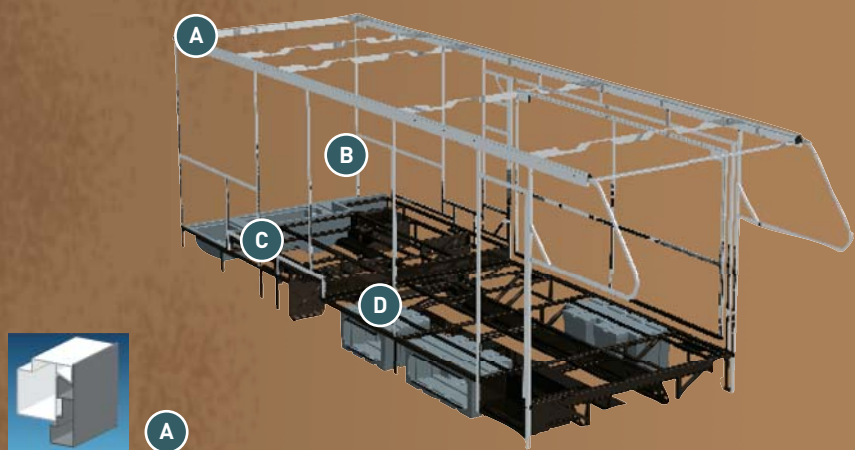
*With slideout

Standard - S	Optional - O	22B	24V	26A	28P	29T	31C
AUTOMOTIVE/CHASSIS							
A - Ford® E350 Chassis – 5.4L Super-Duty V8 SEFI Triton® Engine, 255-hp (22B only)	S						
6.8L Super-Duty V10 SOHC Triton engine, 305-hp (24V only)		S					
Automatic transmission, TorqShift,™ 5-speed with tow/haul feature, 4-wheel ABS, 130-amp. alternator, dual air bags, Trailer Hitch ® 5,000-lb. drawbar/350 lbs. maximum vertical tongue weight & wiring w/7-pin connector, Wheelcovers stainless steel (4)	S	S					
B - Ford E450 Chassis – 6.8L Super-Duty V10 SOHC Triton engine, 305-hp, automatic transmission, TorqShift, 5-speed with tow/haul feature, 4-wheel ABS, 130-amp. alternator, dual air bags, Trailer Hitch ® 5,000-lb. drawbar/350 lbs. maximum vertical tongue weight & wiring w/7-pin connector, Wheelcovers stainless steel (4)		O	S	S	S	S	
C - Chevrolet® Chassis – 6.0L Vortec V8 engine, 300-hp, automatic 4-speed over-drive transmission, tow/haul mode switch, 4-wheel ABS, 145-amp. alternator, dual air bags, Trailer Hitch ® 3,500-lb. drawbar/350 lbs. maximum vertical tongue weight & wiring w/7-pin connector, Wheelcovers stainless steel (4)		O	O	O	O	O	
CAB AREA & DRIVER CONVENIENCES							
Beverage Holder, Cab Seats (Fabric) w/3-point seat belts, armrest, lumbar support, multiadjustable slide/recline, Cruise Control, Curtain cab divider & bunk privacy, Hood Release, Mirrors exterior, manual adjust, Power Cab Door Locks driver & passenger, Power Windows, Powerpoint 12-volt DC/cigarette lighter, Steering Wheel tilt w/power assist, Trim Panels driver & passenger doors	S	S	S	S	S	S	
Mirrors exterior electric remote w/defrost	O	O	O	O	O	O	
Monitor System rearview w/single camera	O	O	O	O	O	O	
ENTERTAINMENT							
Radio AM/FM/stereo/CD, speakers (4), Satellite System Ready, TV Enhancement Package antenna (amplified), 12-volt DC powerpoint(s), interior jack(s), coax wiring, cable input	S	S	S	S	S	S	
DVD Player w/remote (requires 27" TV)		O	O	O	O	O	
Home Theater Sound System DVD player, amplifier, receiver, recessed speakers (5), subwoofer		O	O	O	O	O	
TV 13" color 12-volt DVD w/remotes, slide/swivel shelf (located front lounge/dinette area) Audiovox®	O	O	O	O	O		
TV AC 20" color w/remote, DVD player, galley overhead cabinet							O
TV AC 27" stereo, color w/remote, Video Selection System, front cabinet		O	O	O	O	O	
INTERIOR							
Bunk front overhead w/mattress, slider windows, privacy curtain, storage cabinet, bunk ladder, Ceiling fabric, Countertops laminate, Lights ceiling, incandescent, Roof Vent nonpowered, front overhead bunk, Roof Vent powered, bath, Window Coverings pleated blinds/night (lounge, dinette, & bedroom), mini blinds (bath & galley)	S	S	S	S	S	S	
Roof Vent nonpowered, lounge (used only with front entertainment center)		S	S	S	S	S	
FURNITURE							
Sofa	S						S
Sofa w/2 tables		O	O				
Lounge Chair swivel/slide		S	S	S			
Dinette w/access to storage below seat(s)	S	S	S	S	S	S	
Dinette U-shaped w/access to storage below seats				O	O		
GALLEY							
Pantry	S	S	S				
Faucet dual-control, Microwave Oven, Range Hood vented w/light & fan, Range Top 3-burner w/drawer below, Receptacle(s) duplex, Refrigerator/ Freezer double-door, Norcold®	S	S	S	S	S	S	

- The height of each model is measured to the top of the tallest standard feature and is based on the curb weight of a typically equipped unit. The actual height of your vehicle may vary by several inches depending on chassis or equipment variations. Please contact your dealer for further information.
- Access floorplans feature a wide-body design — over 96 inches. In making your purchase decision, you should be aware that some states restrict access on some or all state roads to 96 inches in body width. Before making your purchase decision, you should confirm the road usage laws in the states of interest to you.
- The load capacity of your motor home is designated by weight, not by volume, so you cannot necessarily use all available space when loading your motor home.
- Capacities are based on measurements prior to tank installation. Slight capacity variations can result due to installation applications.

Standard - S	Optional - O	22B	24V	26A	28P	29T	31C
Range Top 3-burner w/oven, Magic Chef®							
BATH							
Cabinet lavatory, Cabinet medicine, Faucet (Lavatory) dual-control, Faucet (Shower) dual-control w/flexible showerhead, Skylight, Toilet w/hand lever	S	S	S	S	S	S	
Shower Door folding				S	S	S	
Shower Door curtain	S	S	S				
BEDROOM							
Bed queen mattress w/bedspread		S	S		S	S	
Bed queen split mattress w/cover, with interior & exterior access to storage below				S			
EXTERIOR							
Awning Rails w/rain gutters, Bumpers front & rear, Door entrance w/separate screen door, deadbolt lock, Entrance Door Step manual, Light porch w/interior switch, Mudflaps rear, Receptacle AC duplex, Sidewall Skin 1-piece smooth fiberglass, Storage Compartments	S	S	S	S	S	S	
Storage large rear storage bay with 2 storage bins				S	S	S	
Trunk rear backwall, AC duplex receptacle, DC receptacle, shelves, storage baskets, storage hooks, TV antenna jack, plastic compartment w/drain plug			S				
Awning patio, vinyl	O	O	O	O	O	O	
Entrance Door Step electric w/doorjamb switch	O	O	O	O	O	O	
Exterior Accessory Package exterior ladder, painted steel running boards, storage bin covers (NA 22B, 24V, 26A)	O	O	O	O	O	O	
SYSTEMS							
HEATING/AC - Air Conditioner (Roof) 13,500 BTU, ceiling-ducted	S	S	S	S	S	S	
Air Conditioner (Roof) 14,800 BTU, ceiling-ducted			O	O	O	O	
Furnace 25,000 BTU, low-profile, w/wall thermostat	S	S					
Furnace 30,000 BTU, low-profile, w/wall thermostat			S	S	S	S	
ELECTRICAL - Auxiliary Start Circuit, Battery (Coach) Group 24 deep-cycle, Battery (Coach) disconnect system, Battery Charge Control automatic dual, Electrical Distribution System DC fuses, AC breakers, 45-amp. electronic converter/charger, Generator Prep Kit, Monitor Panel wall-mounted, battery condition gauge, generator hourmeter gauge, generator start/stop switch, holding tank levels, LP tank level, water heater light(s), water heater switch, water pump switch, water tank level, Power Cord 30-amp., 25'	S	S	S	S	S	S	
Generator 4,000-watt, Onan® MicroQuiet,™ gas, Batteries (Coach) (2) Group 24 deep-cycle	O	O	O	O	O	O	
PLUMBING - Drain 1" water tank, Dump Valve manual, Tank LP, permanent mount w/gauge, TrueLevel™ holding tank monitoring system, Water Heater 6-gallon, electronic ignition, LP gas, Water Hookup city, Water Pump demand, Water System Winterization Package water heater bypass valve & siphon tube, Water Tank Fill w/locking door	S	S	S	S	S	S	
Drainage System heated electric, one heat pad per tank, pipe wraps, lighted on/off switch next to monitor panel (not available in Canada)	O	O	O	O	O	O	
SAFETY							
Airbags driver & passenger, Assist Bar interior, Brakelamp high-mount, Child-Seat Tether Anchor dinette, Detectors/Alarms LP leak, smoke, carbon monoxide, Fire Extinguisher 10 BC, Ground Fault Interrupter, Seat Belts cab, 3-point, Seat Belts lap (in selected areas), Window escape	S	S	S	S	S	S	
WARRANTY ⁷							
12-month/15,000-mile basic limited warranty, 36-month/36,000-mile limited warranty on structure, 10-year limited parts & labor warranty on roof skin ⁸	S	S	S	S	S	S	

- Capacities shown are tank manufacturer's listed water capacity (W.C.). Actual filled LP capacity is 80% of listing due to overfilling prevention device on tank.
- Actual towing capacity is dependent on your particular loading and towing circumstances, which includes the GVWR, GAWR and GCWR, as well as adequate trailer brakes. Please refer to the Operator's Manual of your vehicle for further towing information.
- See separate chassis warranty details provided in Owner's Manual.
- See your dealer for complete warranty information.
- Not all items available in combination. See dealer for details.
- Winnebago Industries' continuing program of product improvement makes specifications, equipment, model availability and prices subject to change without notice. Comparisons to other motor homes are based on the most recent information available.



SUPERSTRUCTURE® is the term given to Winnebago Industries' structural motor home design and construction. Rather than a single component, it is the culmination of design integration that incorporates steel and aluminum substructures; welded tubular steel floor risers; interlocking joint technology; and Thermo-Panel® floor, roof and sidewalls to form a high-strength, durable vehicle body.

Thermo-Panel manufacturing combines a durable exterior panel with welded aluminum support substructures. The substructures are embedded in a high-density, block-foam insulation core to create a strong, durable, yet lightweight sidewall. Just another Winnebago Industries' invention.

- A** Interlocking joint construction utilizes advanced extruded aluminum structural components to create integrated floor-to-sidewall and sidewall-to-roof joints. This design effectively distributes the weight of the walls and roof, making a stronger and more durable body than competitor designs that rely on screws to carry the weight.
- B** The foundation substructure assembly is precision-aligned to maximize strength and cross-coach support as well as durability.
- C** Tubular steel risers feature a truss design for improved strength and to provide a stable base for the floor structure and storage compartments.
- D** Critical steel components are treated using an advanced electrodeposition coating process that provides superior corrosion protection.



One-year-old Winnebago Industries' fiberglass roof



One-year-old competitor's rubber roof

BUILT TO A HIGHER STANDARD.

Winnebago Industries features a one-piece fiberglass roof skin backed with a 10-year limited parts-and-labor roof skin warranty. Fiberglass offers superior strength, attractiveness and durability compared to rubber roofs found on many competitive models. Over time, rubber roofs are susceptible to chalking, streaking and degradation, and have less puncture and tear resistance than fiberglass.



Take a Tour We're proud of our process, our state-of-the-art facilities and the people who make Winnebago Industries number one. We invite you to visit our factory in Forest City, Iowa, for a firsthand look at the dedication and technology behind every motor home we build.



Recognized Quality The Recreation Vehicle Dealer Association annually rates RV manufacturers and awards the Quality Circle award to manufacturers who provide exceptional products, service and support. Winnebago Industries is proud to be the only manufacturer to receive this award every year since its inception.



Committed to Service We back our motor homes with the industry's best service after the sale.

- 12-month/15,000-mile basic limited warranty
- 36-month/36,000-mile limited warranty on structure
- Standard 10-year limited parts-and-labor roof skin warranty
- Complimentary 24-hour roadside assistance program
- TripSaver Fast Track Parts. TripSaver guarantees that in-stock warranty parts ship directly to your dealer within 24 hours.
- National dealer service network

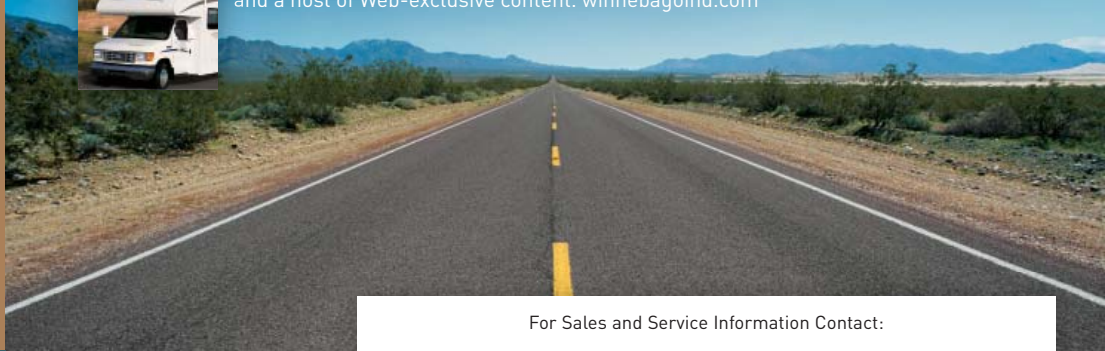


WIT Club Winnebago owners are like family. Joining the Winnebago-Itasca Travelers is a great way to meet and travel with other Winnebago enthusiasts. Members enjoy:

- Caravans and rallies
- Local and state group activities
- RV travel benefits



Visit the Web Visit us on the Web for more information on all of our motor homes and a host of Web-exclusive content. winnebagoind.com



For Sales and Service Information Contact:

Built proudly by



NYSE listing: WGO