

2006 Denali Travel Trailers & Fifth Wheels

# DENALI

*Let Your Journey Begin*



*The native people of the great Alaskan wilderness call the massive peak of Mount McKinley "Denali". Translated, Denali means "Great One."*





28RL-M5 in Ville Deste Green

# DENALI

## Let Your Journey Begin.

The native people of the great Alaskan wilderness call the massive peak of Mount McKinley "Denali".

Translated, Denali means "Great One".

Denali is also the name of the immense national park and nature preserve containing Mt. McKinley. At 6,000,000 acres, Denali National Park exemplifies Alaska's character as one of the world's last great frontiers for wilderness and adventure. It remains an untouched terrain of wildlife and glaciated mountains.

The grandeur and beauty of Denali National Park has inspired Denali laminated travel trailers and fifth wheels. Denali will captivate your senses and deliver first-class features and comfort with unprecedented value.

Distinctive style and premium features make Denali stand out from the crowd. Featuring premium residential furniture, large picture windows with designer valances and fabric night shades, Denali sets the new standard in laminated Travel Trailers and Fifth Wheels. Plus, all slideout rooms feature designer lighting, a hardwood slide fascia and large overhead storage cabinets over the sofa.



Designer touches like a Howard Miller clock and framed artwork add to Denali's sophisticated decor (most models).





*Pictured are the 31RGS-M5 bed and bath.*



*Denali's bedroom slide features a queen bed, large front closet with mirrored doors, angled sink and mirrored cabinets, a free-standing chest of drawers and a pull-out TV shelf. Denali gives you the storage you need for those extended vacations away from home. Bedroom slides are standard on high profile fifth wheels and optional on travel trailers and mid-profile fifth wheels.*

*All Denali bedrooms include a designer master suite package with headboard, pillows with shams, a bedspread and matching curtains.*

*Denali's kitchen is loaded with standard features that are usually found as upgrades on our competitors' products. A large double door refrigerator, large microwave, a double bowl sink with high-rise faucet, raised panel solid wood cabinet doors with brushed nickel hardware and over-sized drawers on residential steel roller drawer glides make Denali your best choice for premium features and unprecedented value.*

**31RG-M5**





# DENALI PREMIUM CONSTRUCTION



## Roof

10. Fully decked walk-on roof with one-piece EPDM rubber roof membrane - 12 year rubber warranty
11. 3/8" Structural Wood decking with 25 year warranty
12. Residential fiberglass insulation
13. 5" Tapered truss roof rafters
14. Ducted roof air conditioning
15. Rain gutter molding with corner downspouts
16. 13,500 BTU ducted air conditioning

## Chassis

17. Steel I-beam frame with outriggers. Outriggers tie weight of sidewalls and floor into frame rails
18. Radial tires on *AI-Ko* leaf spring axles with Ultra-lube hubs
19. Extended pin box (most Fifth Wheel models)
20. Triple fold-away steps
21. Standard electric front jacks (M5 and H5 only)

## Floor

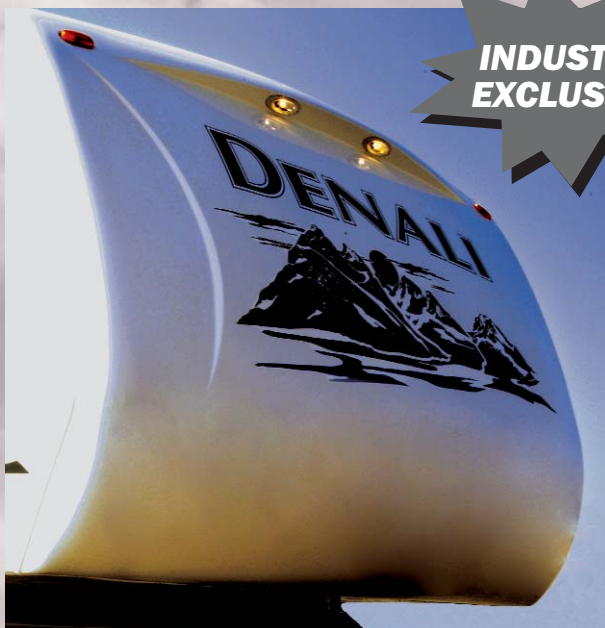
22. Polypropylene water resistant barrier attached to bottom of floor structure
23. 2" x 3" floor joists, 12" on center
24. Residential R-7 fiberglass insulation
25. One-piece 5/8" 5-ply tongue-and-groove, marine grade plywood floor
26. Residential tile-like linoleum
27. Residential carpeting
28. Optional insulated and enclosed underbelly

## Walls

1. Laminated, high-gloss *Lamilux* fiberglass bonded walls
2. 1/8" wood backer
3. Welded aluminum frame
4. Polystyrene block foam R-7 insulation
5. Second layer of 1/8" wood backer with decorative wallboard
6. *A & E* patio awning
7. Tinted radius clamp-ring windows
8. Radius cornered baggage doors with lock and finger pull
9. Fifth Wheels - Full fiberglass cap  
Travel Trailers - Fiberglass wrap with lower diamond plate

## MORE STANDARD FEATURES FOR YOUR DOLLAR!

\*See page 8 for more great features



### New Mid-Profile Fifth Wheel Front Cap with Area Lights

The aerodynamic front cap is designed to increase headroom in the bedroom without increasing the overall height of the mid-profile fifth wheel. In addition, the new cap features integrated "area lights." The area lights are on a dimmer switch that allows you to illuminate your campsite at night for added security.



An Aqua Magic porcelain toilet with foot flush is standard in all Denali bath's.



A 30 Amp marine grade detachable power cord stores in an outside compartment when not in use, saving valuable interior storage space.



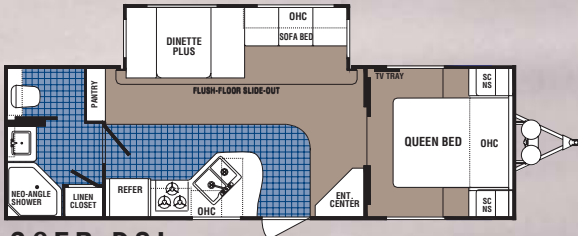
6-gallon gas/electric water heater with direct spark ignition (DSI) is standard.



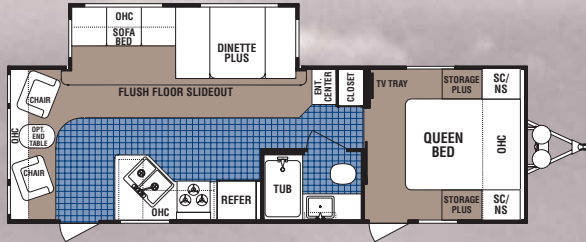
Ultra-lube hubs are standard on Denali. This feature allows for easy wheel bearing lubrication.



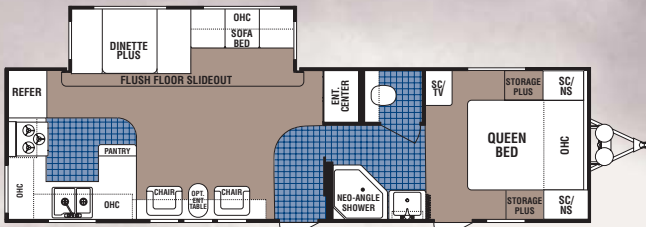
# TRAVEL TRAILERS



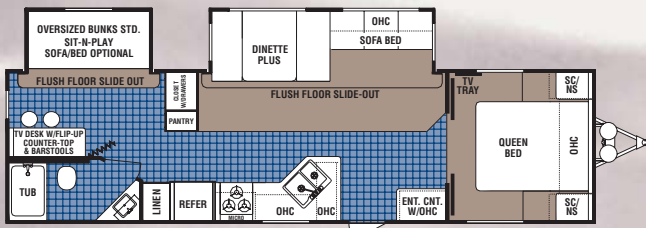
**26FB-DSL**



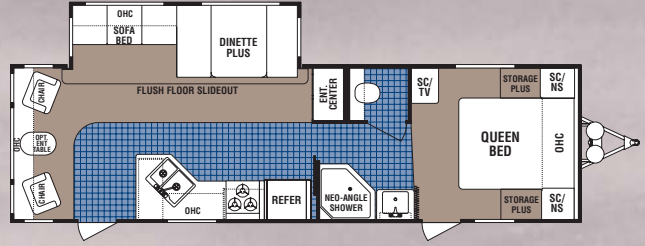
**26RL-DSL**



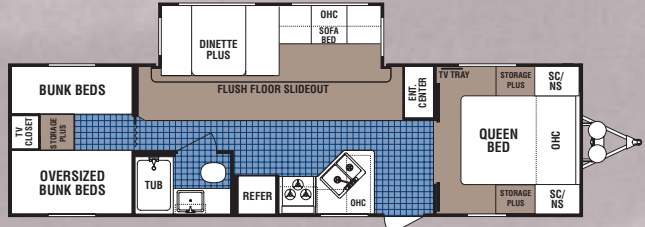
**29RK-DSL** Available options: M



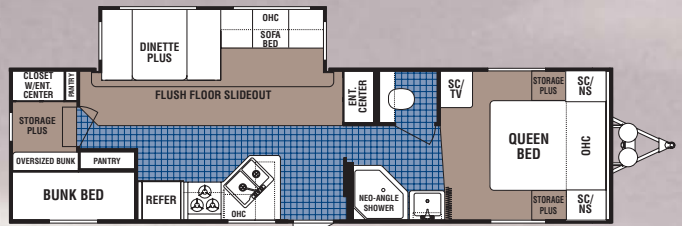
**30BS-DSL**



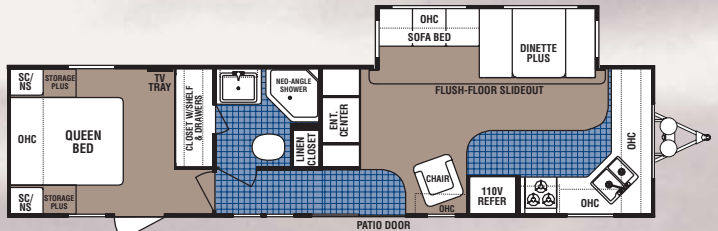
**30RL-DSL** Available option: M



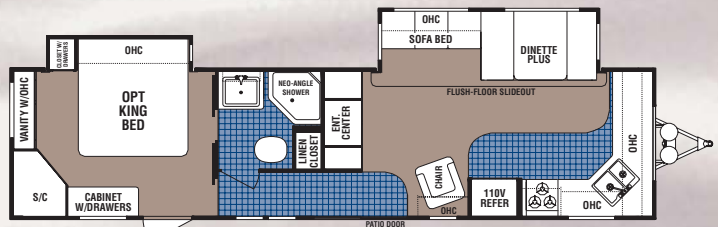
**31BH4-DSL** Available options: J, T



**31BK-DSL** Available option: D, M, T



**36FK-DSL**



**36FK-DSL** Shown with king bed slide suite option

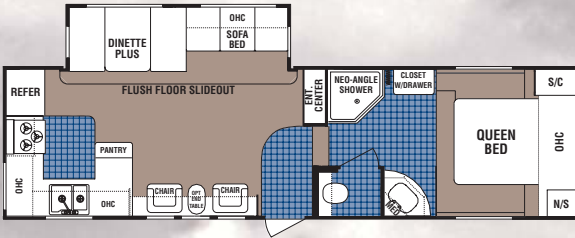


TRAVEL TRAILERS	26FB-DSL	26RL-DSL	29RK-DSL	30BS-DSL	30RL-DSL	31BH4-DSL	31BK-DSL	36FK-DSL
Unloaded Vehicle Weight	6546	6786	7390	8058	7368	7244	7564	8016
Hitch Dry Weight	866	778	884	984	1022	1104	1066	1394
GVWR	9680	9680	9680	9680	9680	9680	9680	11176
Net Cargo Capacity	2642	2402	1798	1622	1820	1944	1624	2668
Length	29'9"	29'9"	33'6"	33'11"	32'3"	33'3"	34'8"	37'7"
Exterior Width	8'	8'	8'	8'	8'	8'	8'	8'
Exterior Height	11'0"	11'0"	11'0"	11'0"	11'0"	11'0"	11'0"	11'0"
Fresh Water Capacity	46	46	46	46	46	46	46	46
Grey Water Capacity	37	37	37/37	37/37	37	37	37/37	37/37
Black Water Capacity	37	37	37	37	37	37	37	37
Tire Size	■	■	■	■	■	■	■	■
Furnace Size (BTUs)	30000	30000	34000	34000	34000	34000	34000	34000
Tire Size : ■ = ST225/75R15(D)								

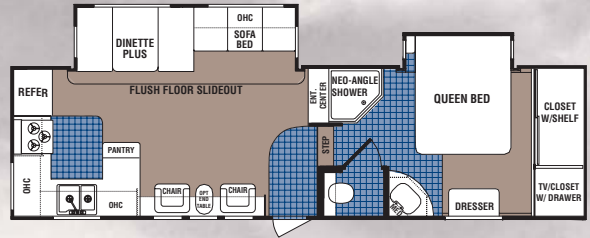
Vehicle Loading - Every effort has been made to provide the greatest number of options for the recreation vehicle owner. Along with these choices comes the responsibility to manage the loads that are imposed by the choices so that they remain within the manufacturer's specified chassis weight limits. Do not overload the recreation vehicle. Net carrying capacity (NCC) determined by subtracting unloaded vehicle weight (UVW) from gross vehicle weight (GVWR) and includes fluids, options and cargo. Liquid capacities and weights are approximations only.

Warning: This information is intended as a guide only. Weights of individual vehicles may vary. Consult your owner's manual for complete loading, weighing and towing instructions. Product information, specifications, and photography in this brochure were as accurate as possible at time of printing. Photographs may contain some features that are optional on your vehicle. Since we continually strive to improve our products, actual products may differ. Prices and specifications are subject to change without notice. All capacities are approximate and dimensions are nominal. Some features shown are optional and may be different or unavailable in Canada. Vehicles are designed for recreational use only and not intended for use as a primary residence.

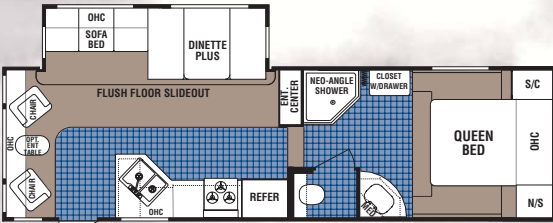
# MID PROFILE FIFTH WHEELS



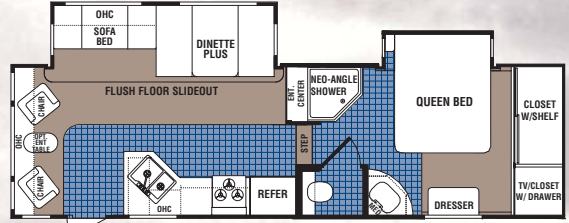
**28RK-M5**



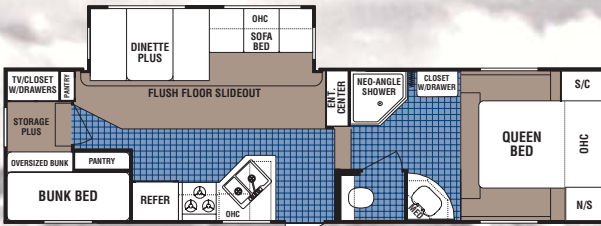
**28RKBS-M5**



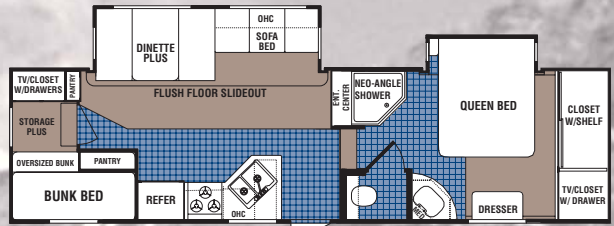
**28RL-M5**



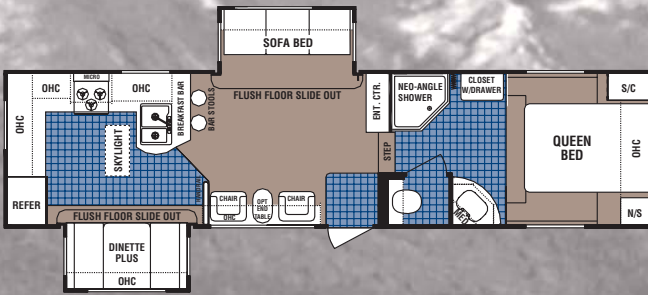
**28RLBS-M5**



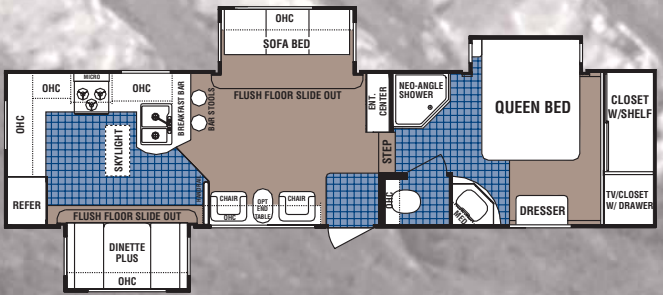
**28BH-M5** Available option: D, T



**28BHBS-M5** Available option: D, T



**31RG-M5**



**31RGBS-M5**

## Unprecedented Value.

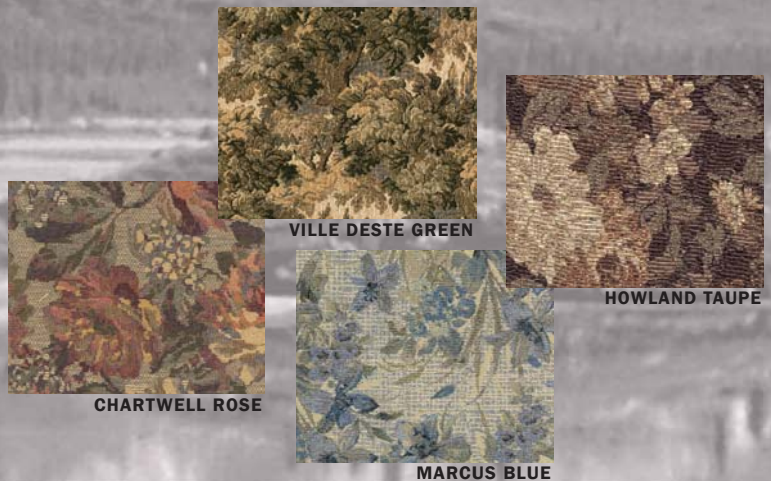


Denali features a standard 5-in-1 home entertainment center with remote control, a DVD/CD/MP3 player, AM/FM tuner, surround sound speakers and sub-woofer.



Denali features "RV 800" residential steel roller drawer glides. They open and close with ease and are designed for years of reliable use.

## DECOR CHOICES



VILLE DESTÉ GREEN

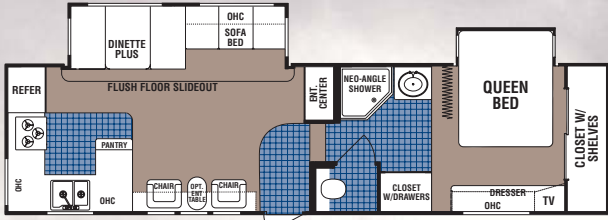
HOWLAND TAUPE

CHARTWELL ROSE

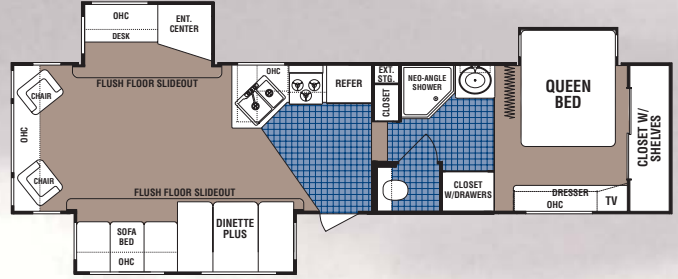
MARCUS BLUE



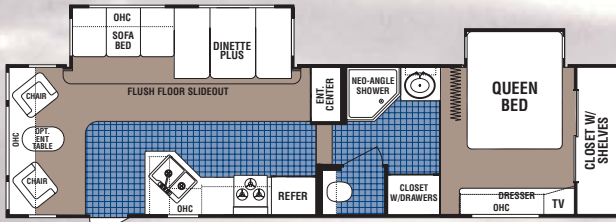
# HIGH PROFILE FIFTH WHEELS



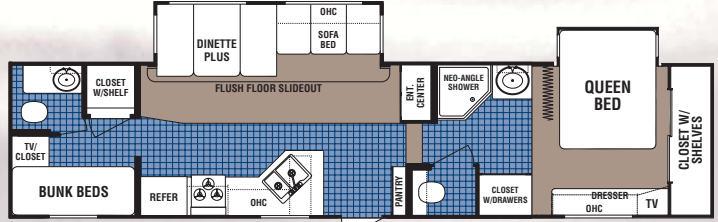
**28RK-H5**



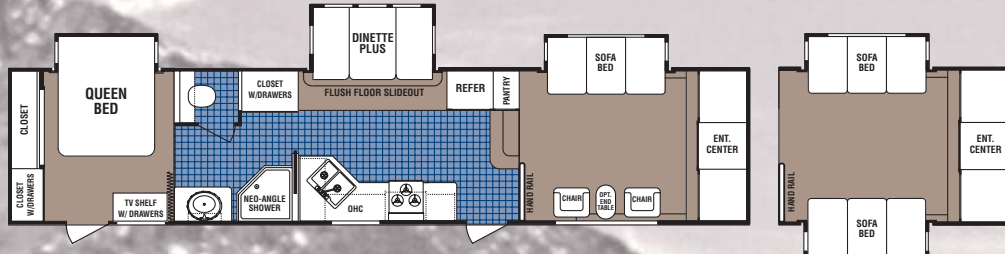
**33RL-H5**



**29RL-H5**



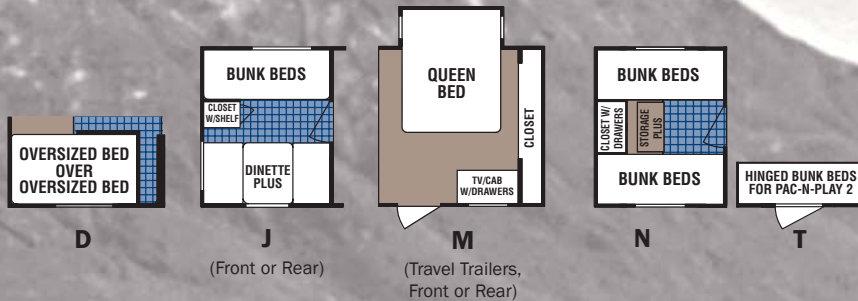
**35BH-H5** Available options: J, N, T



**35FL-H5**

**OPTION**  
Front lounge second slide

## FLOORPLAN OPTIONS



## MID PROFILE

## HIGH PROFILE

FIFTH WHEELS	28RK-M5	28RKBS-M5	28RL-M5	28RLBS-M5	28BH-M5	28BHBS-M5	31RG-M5	31RGS-M5	28RK-H5	29RL-H5	33RL-H5	35BH-H5	35FL-H5
Unloaded Vehicle Weight	7822	N/A	7920	N/A	8232	8604	9136	9648	9088	8994	10034	10252	9860
Hitch Dry Weight	1372	N/A	1494	N/A	1394	1544	1428	1676	1982	1952	2088	2188	2206
GVWR	10560	N/A	10560	N/A	10560	10560	12192	12192	12192	12192	12480	12480	14400
Net Cargo Capacity	2738	N/A	2632	N/A	1836	1956	3056	2544	3104	3198	2446	2228	4560
Length	31'8"	N/A	30'3"	N/A	33'6"	33'6"	34'6"	34'6"	33'10"	33'2"	36'2"	37'6"	39'8"
Exterior Width	8'	N/A	8'	N/A	8'	8'	8'	8'	8'	8'	8'	8'	8'
Exterior Height	12'2"	N/A	12'2"	N/A	12'2"	12'2"	12'2"	12'2"	12'7"	12'7"	12'7"	12'7"	12'7"
Fresh Water Capacity	46	N/A	46	N/A	46	46	46	46	46	46	46	46	46
Grey Water Capacity	37/37	N/A	37/37	N/A	37/37	37/37	37/37	37/37	37/37	37	37/37	37	37/37
Black Water Capacity	37	N/A	37	N/A	37	37	37	37	37	37	37	37	37
Tire Size	■	N/A	■	N/A	■	■	■	■	■	■	●	●	●
Furnace Size (BTUs)	30000	N/A	30000	N/A	34000	34000	34000	34000	34000	34000	34000	34000	34000

Tire Size : ■ = ST225/75R15(D) ● = ST235/80R16(E)



# DENALI

## 2006 TRAVEL TRAILERS AND FIFTH WHEELS

### PREMIUM STANDARD FEATURES

Compare these features against the competition. We are sure you will agree that Denali is your best RV value.

#### DENALI VALUE PACKAGE - STANDARD

- Detachable 30 amp power cord
- Range hood with 12V light and exhaust fan
- Silverware drawer
- AI-Ko leaf spring axles with Ultra Lube hubs
- Countertop extension
- Carbon monoxide, smoke/LP detectors
- Front fiberglass cap with area lights (M5's)
- Front fiberglass cap (H5's)
- Front radius profile with lower diamond plate (TT)
- Laminated fiberglass aluminum frame
- Radial tires
- Twin 30# LP bottles
- Premium high-rise galley faucet
- Systems monitor panel
- Rear ladder (FW)
- Bedroom/living area carpet and pad
- Residential steel roller drawer guides
- Flush floor slide outs
- Pass-through exterior storage
- 12V power exhaust roof vent in bath
- Double bowl, brushed nickel color sink
- Bar stools (see floorplan)

#### RELAX IN LUXURY PACKAGE\*\*

- Sink and stove cover
- Skylight in bath
- Decor-coordinated throw pillows
- Hide-a-bed sofa
- Executive chairs (see floorplan)

- Neo-angle shower with glass door (all FW's, most TT's)
- Bifold shower/tub door
- Interior storage below dinette
- Wall border
- Solid wood, arched cabinet doors
- Phone jack/data port
- Bedspread with pillow shams and headboard
- The "Great One" framed artwork (most models)
- Solid wood refer fronts
- Slider windows on sides of slides
- Designer *Howard Miller* clock

#### THE GREAT ONE PACKAGE\*\*

- Electric front jacks (FW)
- Rear stabilizer jacks (FW)
- Front/rear stabilizer jacks (TT)
- 13.5 BTU ducted A/C
- A&E awning
- Double door refrigerator
- Home theater system with DVD/CD player, AM/FM tuner surround sound speakers and sub-woofer
- Hitch light
- Porcelain toilet with foot flush
- TV antenna
- 6 Gallon gas/electric DSI water heater
- Exterior storage light
- *Magic Chef* oven with peizo ignition
- Entry assist handle
- Cable and satellite hook-up

#### OTHER STANDARD FEATURES

- Residential tile-like linoleum
- Coat hooks (most models)
- 12V demand water pump
- Hydro flame forced air, DSI furnace with wall thermostat
- 110V duplex receptacles interior and exterior
- ABS tub surround
- Medicine cabinet with mirror in bath
- Towel bar with coat hooks
- Innerspring mattress
- TV tray/cable TV hook-up in bedroom
- Lift-up bed with storage below

#### POPULAR OPTIONAL FEATURES\*

- *Artic Package* adds *Poly Air* roof insulation and enclosed, insulated and heated underbelly
- 15 BTU A/C
- Washer /dryer prep (high profile fifth wheels only)
- Shock absorbers
- Exterior shower
- Aluminum rims
- Dark tint safety glass windows
- *Fantastic* power roof fan
- Ceiling fan with light (FW)
- 10 Gallon water heater
- Rocker recliners & ottomans
- Pac-n-Play storage

\*See dealer for available options

\*\*Required packages

## OPTIONAL FEATURES\*

\*See dealer for available options

Denali's new Half-Time oven/microwave cooks like a gas or electric oven in half the time. This innovative oven cooks faster by using convection heat and microwave energy simultaneously. It also features a sealed, 3-burner cook-top, microwave and convection in one.

A range hood with 12V light and exhaust fan is standard.



Denali's free-standing dinette is a favorite option for those who don't need the sleeping space of the standard 44" "Dinette Plus".



"Spray Away" exterior wash station includes hot and cold water controls, a removable coil hose and sprayer.

[www.denali-rv.com](http://www.denali-rv.com)

A division of Dutchmen Manufacturing  
2164 Caragana Court ■ Goshen, IN 46526  
Sales: 574.534.1224 ■ Fax: 574.533.3807

# DENALI

Your Local Dealer:



#### Free Good Sam Club Membership when you purchase a Denali trailer.

We are pleased to offer all owners of a new 2006 Denali a free 6 month membership in the Good Sam Club. The Good Sam Club is the world's largest RV owner's organization, and we believe that being a member will help you enjoy your new travel trailer even more.

With your free membership, you will receive benefits designed to help you get the most from your RV, like:

- 10% discount at more than 1,700 RV parks & campgrounds
- Fuel and restaurant discounts
- Access to the Good Sam Club web site
- Subscription to *Highways* magazine
- FREE RV trip routing service
- Invitations to camping rallies and events

After your purchase, keep an eye out for a mailing from Denali with all of the membership details! (Allow 4 to 6 weeks for details to arrive in the mail)