

2006 WINNEBAGO VECTRA®

*Unsurpassed Comfort and Performance.*



## MEET OUR FLAGSHIP — THE 2006 VECTRA.

*The 2006 Vectra features an interior ceiling height of over 7 feet 2 inches for an incredibly spacious and open interior.*



40KD - Caspian Blue with Washed Maple

### **BUILT TO LEAD.**

When you own the 2006 Vectra, you own the road. And the moment you set foot inside this elegant coach, you'll realize you've stepped inside something extraordinary. With its luxurious interiors and upscale features, the Vectra makes every trip an unforgettable experience.

The superior quality of the Vectra starts with the Evolution™ Chassis, a Winnebago Industries exclusive. Our engineers worked closely with Freightliner® to create a chassis with one-piece formed steel chassis rails, which provide increased mid-section storage, better weight distribution and improved floorplan flexibility. A powerful 400-hp diesel engine is standard on the 40-foot models. The 36RD and 40FD feature quad slideouts with an opposing flat floor in the living room, providing a spacious living area.

The Vectra has standard floor-ducted, forced-air, 40,000 BTU heating with a two-stage furnace. The 40FD and 40KD feature a second 25,000 BTU furnace. The ceiling-ducted TrueAir® residential central air conditioning gives you consistent, even heating and cooling with quieter operation. There's also a heat pump that helps keep you warm without turning on the furnace. Plus, the flush-mounted, dual-glazed windows add thermal efficiency in all types of weather.

New for 2006, you can stretch your legs by the fire, thanks to the available electric fireplace in the lower portion of the newly redesigned entertainment center with a 30" Sony® TV on the 40FD. The 2,000-watt inverter/charger lets you enjoy your favorite programs when you're not connected to shoreline or generator power.



JUST WHAT YOU'VE BEEN LOOKING FOR.

Dual flat-floor front slideouts with StoreMore® give you increased seating flexibility.



40FD - Barcelona Sage with Washed Maple



#### **SURROUND YOURSELF WITH LUXURY.**

The Vectra is equal parts luxury and comfort, thanks to SmartSpace™, our innovative design philosophy, which makes the most of interior living areas by maximizing functionality and focusing on user-friendly features.

Our premium Stitchcraft furniture looks and feels great, and is available with leather upgrades. While relaxing, enjoy a cool breeze with the available lounge ceiling fan and enjoy your favorite program on the Sony TV with a Home Theater Sound System featuring five speakers, subwoofer, receiver and DVD/VCR combo for even more entertainment options.

Throughout the Vectra, you will find solid-wood drawers and cabinet doors with hidden hinges and a catalyzed protective topcoat that provides a durable, luxurious satin finish. And new for 2006 — a taller solid surface backsplash complements the upscale look.

#### **A BEDROOM YOU CAN TAKE ANYWHERE.**

After a full day of traveling, it's nice to have a bedroom you can call your own. And thanks to the standard rear slideouts, the Vectra's bedroom becomes your personal retreat after the day's adventures.

Inside the bedroom, you can watch TV on the standard 20" Sharp® LCD screen, which comes with a remote sensor that allows you to control the front DVD/VCR components from the bedroom. Sleep the night away in the available queen-sized Vantage Point™ Sleep Number® bed by Select Comfort® (king-size available on the 40KD). Using the digital hand control, you can quickly adjust each side of the mattress to your individualized, ideal level of comfort and support by setting your Sleep Number — Your Key to a Perfect Night's Sleep.™

The available ceiling fan creates a cool, gentle breeze so that you'll sleep comfortably on those warm summer nights.



**YOUR OWN PERSONAL DINER.**

*From the spacious countertops to the double-door refrigerator/freezer with icemaker, the Vectra's galley provides a luxurious culinary experience.*



**TODAY'S SPECIAL: WHATEVER YOU WANT.**

The Vectra's galley provides everything you need to prepare your favorite meals, whether it's a five-course dinner or a quick bite on the go.

You'll find Corian® solid-surface countertops, sink covers, a range cover and a wooden silverware tray. A 30" residential microwave/convection oven with exterior vented range fan sits above the counter, making preparation a snap, especially when you've been busy exploring the outdoors. Choose the available G.E. Advantium™ Speedcook/microwave oven. And for added refinement throughout the galley, select the stainless steel upgrade package (shown here), which includes stainless steel door panels on the refrigerator, range, oven, microwave and dishwasher. A three-burner range with large oven and a four-door refrigerator with icemaker are also available to make an exceptional galley even better.

The large Swanstone™ double sink is a great place to get a clear, fresh glass of water using the Everpure® water filtration system. Cleanup couldn't be easier when you opt for the available under-counter, drawer-style dishwasher. A conveniently located pantry offers plenty of storage space so you can stock up for longer trips; and the new full-extension drawer slides allow for easy access to all your stored items.

Underfoot, the standard low-maintenance ceramic tile floorcovering gives the galley one more luxurious touch.

**A COMFORTABLE SEAT WHEREVER YOU SIT.**

*From the reclining chair with ottoman to the BenchMark™ full comfort dinette to the Rest Easy® multi-position lounge, there's no shortage of comfortable places to sit.*



**THE COMFORTS OF HOME, ON THE ROAD.**

The Vectra is filled with upscale amenities that give you both the luxuries of home and the freedom of the road. Stay current reading the paper while relaxing in the Euro Chair from Flexsteel®, standard on the 36RD and 40FD (available on the 40KD with side table module).

The BenchMark full comfort dinette features innerspring seat cushions and contemporary styling, and now there are taller dinette seat backs for added comfort and support while dining. Flip up the seats to access the large storage spaces or fold down the table to quickly convert the dinette into a comfortable bed. For greater seating flexibility and safety while traveling, a child-seat tether anchor is located in the forward-facing dinette seat.

The Rest Easy multi-position lounge, offers seating flexibility, comfort and a convenient beverage holder. At the touch of a button, the sofa becomes a relaxing recliner with ottoman. Touch the button again, and it's a comfortable, contoured bed.

In between lounging, wash your clothes with the available built-in combination washer-dryer, which is 20 percent larger for 2006 and is enclosed with solid-wood doors for an extra touch of class. It also features multiple wash, time and temperature cycles for a wide variety of fabrics.



**CUSTOM TABLE OPTIONS FOR A CUSTOMIZED EXPERIENCE.**

The available multifunction table seats two, but can expand to accommodate four. It also functions as a handy computer desk.

The legless dining table design provides elegant dining for two and easily expands to accommodate four place settings when entertaining guests.

The spacious bathroom includes a residential-height porcelain toilet, Corian solid-surface countertops with backsplash, molded sink, one-piece fiberglass shower with textured-glass shower door and a ceramic tile floor. For added convenience, choose an available shower package upgrade with a handheld showerhead and a fold-down seat (available on the 36RD and 40FD).



## INNOVATION'S BUILT INTO EVERY VECTRA.

You're in command with innovative features such as the OnePlace® systems center, which allows you to check vital functions while giving you access to frequently used switches, gauges and controls.



SIRIUS  
RV-RADIO®

### THE BEST TRIPS ARE HASSLE-FREE.

The Vectra's innovative features provide a seamless driving experience that invites you to focus on your adventure.

**TrueAir™:** Control the interior climate with ease, thanks to our residential central air conditioning. At the heart of the system is a Coleman®-Mach® cooling unit, located below the floor line of the coach. Compared to roof air conditioners, TrueAir cools 40 percent faster and is 10 percent quieter.

**PowerLine®:** This energy management system monitors on-board electrical usage to minimize the nuisance of tripped campground circuit breakers.

**Adjustable Pedals:** The automotive-style brake and accelerator pedals are adjustable at the push of a button.

**Two-Way Radios:** Keep in touch in the campground or on side trips. They have up to a five-mile range and can recharge from the coach's house batteries at their built-in charging station.



### ENGINEERED TO IMPRESS.

Our engineers pay meticulous attention to every detail. Our dash is ergonomically designed, putting the driving controls at your fingertips. The SmartWheel™ steering wheel includes controls for key functions and features tilt and telescoping functions. Additional features include electronic compass, thermometer, built-in defroster fans, bus-style power driver and passenger sunvisors, sliding driver and passenger windows, driver and passenger map lights, and high-back custom-designed Stitchcraft® driver and passenger cab seats. The standard Sony rearview monitor system and optional side cameras provide peace of mind while maneuvering. The RV Radio® includes AM/FM stereo; CD player; weather band; and large, easy-to-use buttons and knobs. Upgrade your RV Radio with the available Sirius® Satellite Radio Package. Sirius brings you 120 channels of crystal clear programming and a free six-month subscription (not available in Canada).

**KeyOne™ System:** A single key or remote opens entrance doors and most exterior compartments and fuel-fill doors, so you don't have to keep track of a whole slew of keys.

**TripTek™:** This available computer collects, analyzes and saves vehicle data while displaying trip information on the rear Sony monitor.

**TrueLevel™:** Our innovative holding tank monitoring system incorporates Mirus\* detector cells to determine liquid levels from outside the tank, putting an end to inaccurate tank-level readings.

\*Mirus is a trademark of Material Sciences Corporation.

THE GREAT OUTDOORS JUST GOT A LITTLE GREATER.

Electric patio and entrance awnings come standard, while the available awning sunscreen protects the patio area.



#### EXTERIOR FEATURES YOU'LL APPRECIATE ON EVERY TRIP.

Although you'll love your Vectra's interior, you'll find plenty of enhancements around the exterior as well.

**StoreMore:** This exclusive slideout system extends the exterior compartments along with the slideroom for easy access to your stored items. An available fold-out aluminum ladder (available on the 40FD and 40KD) is in an easily accessible area of the StoreMore. It's a perfect example of how we use Smart Storage™ to make space more usable.

**Smart Storage:** The optional slideout storage box with an upper shelf is just the spot for additional picnic items (not available on the 36RD).

**Exterior Entertainment Center:** The center includes an AM/FM stereo, CD player with remote, 12-volt DC receptacle, TV jack, 110-volt outlet and speakers. Available upgrades include a 20" TV and DVD player with remote.

**Auxiliary Air Connection:** This standard connection provides a ready source of compressed air and it includes a detachable 50-foot hose.



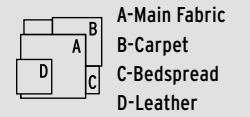
#### THOUGHTFUL TOUCHES MAKE ALL THE DIFFERENCE.

Whether it's resolving one of life's little annoyances or keeping you in touch with companions, the Vectra will delight you at every turn.

The exterior service center is located for easy access with color-coded, easy-to-read labels and includes our QuickPort® service connection hatch. It allows you to close your compartment door when connected to hookups at the campground. And you'll never struggle putting cords through small holes because the hatch is large enough to accommodate both hoses and power cords. The QuickConnect® coupling valve on the sewer hose makes for quick and clean hookups and even has its own storage holster.

To make sure you catch all your favorite shows wherever you are, the Vectra features an available digital satellite dish or an in-motion RV digital satellite dish from King-Dome®.

We believe the same high standards we apply to construction should apply to interior design. That's why we create efficient floorplans based on customer input, why we look for durable fabrics in pleasing colors, and why we handcraft our own cabinets using traditional panel-and-rail construction.



Concert Cherry



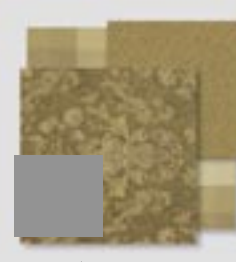
Honey Cherry



Portsmouth Oak



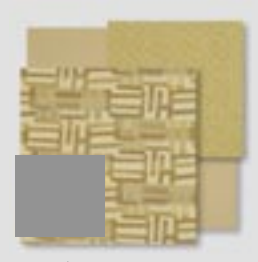
Washed Maple



Barcelona Sage

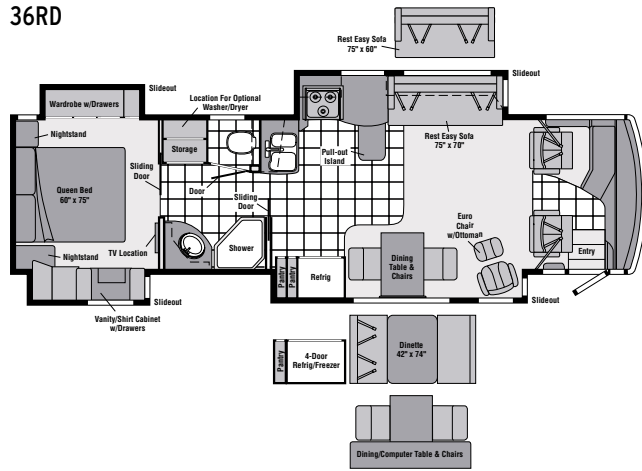


Caspian Blue

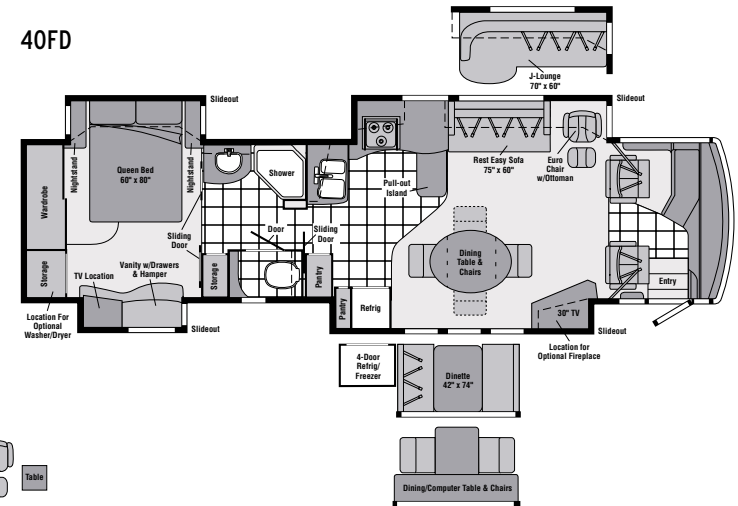


Sandy Cove

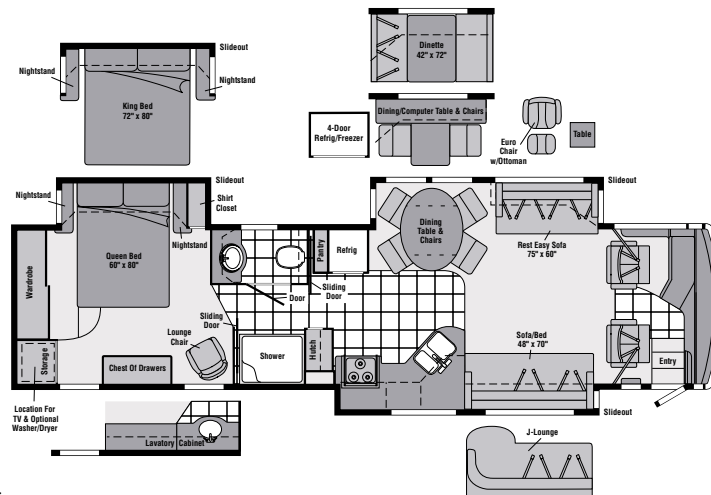
36RD



40FD



40KD



Ceramic Tile Floorcovering



Seat Belts

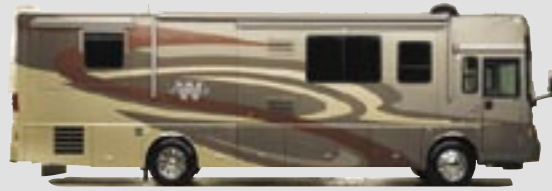
Note: Dimensions shown are for sleeping space only and may vary due to styling differences.



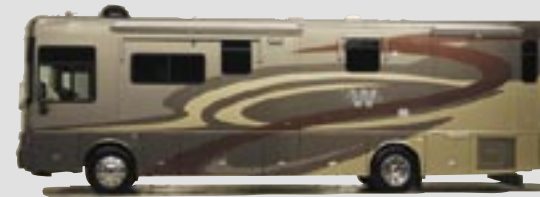
A LASTING FIRST IMPRESSION, COURTESY OF WINNEBAGO FULL-BODY PAINT.

## EXTERIORS

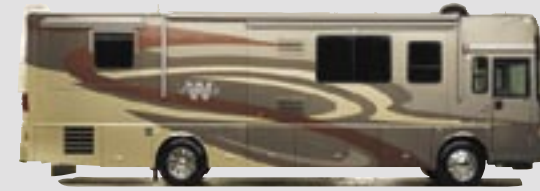
The Vectra also features a 7,500-watt Onan® Quiet Diesel™ generator. It allows you to enjoy electrical power wherever you may roam and sits on a pull-out tray for easy access. For added convenience, the Vectra features turn signals and a breakaway capability in each mirror arm. Before relaxing outdoors, the available automatic hydraulic leveling jacks make leveling the coach easier and quicker.



Canyon Stone



Prairie Fire



Valley Mist



### EVOLUTION CHASSIS

The Vectra is built on the Evolution Chassis, a Winnebago Industries exclusive. The 36RD chassis is fitted with a 350-hp Caterpillar® C7 turbo-charged, after-cooled, 7.2L turbo-charged diesel engine, and a GVWR of 32,000 lbs. for more cargo carrying capacity.

Standard on the 40FD and 40KD models is the 400-hp Cummins® ISL 8.9L turbo-charged diesel engine with GVWR of 24,320 lbs. All models feature the Allison® 3000 MH six-speed electronic transmission and independent front suspension (IFS). The IFS on the Vectra can make any road seem like a newly paved highway. IFS provides greater lateral stability, eliminates bump steer and lets each wheel move independently through its range of motion. Each tire maintains better contact with the road and you get a smooth ride, comparable to that of a luxury sedan.

On top of that, you'll have access to a network of more than 350 Freightliner chassis service centers, many open 24 hours a day, seven days a week. Take the wheel of the Vectra and experience the driving comfort, responsive handling and smooth ride you've come to expect from Winnebago.



THE LEADER AT EVERY TURN™

# 2006 VECTRA SPECIFICATIONS

	36RD	40FD	40KD
<b>Length</b>	367"	39'10"	39'10"
<b>Exterior Height<sup>a</sup></b>	12'3"	12'3"	12'2"
<b>Exterior Width<sup>b</sup></b>	8'5.5"	8'5.5"	8'5.5"
<b>Exterior Storage<sup>c</sup> (cu. ft.)</b>	127.0	136.4	130.7
<b>Interior Height</b>	7'2"	7'2"	7'2"
<b>Interior Width</b>	8'5"	8'5"	8'5"
<b>Freshwater Capacity w/Heater<sup>d</sup> (gal.)</b>	108	108	108
<b>Holding Tank Capacity<sup>e</sup> - Black/Gray (gal.)</b>	54 / 54	62 / 54	54 / 54
<b>LP Capacity<sup>e</sup> (gal.)</b>	31	31	31
<b>Fuel Capacity (gal.)</b>	100	100	100
<b>GCWR<sup>f</sup> (lbs.)</b>	42,000	44,320	44,320
<b>GVWR (lbs.)</b>	32,000	34,320	34,320
<b>GAWR - Front (lbs.)</b>	12,000	14,320	14,320
<b>GAWR - Rear (lbs.)</b>	20,000	20,000	20,000
<b>Wheelbase</b>	228"	267"	267"

Standard - S Optional - O

36RD 40FD 40KD

## AUTOMOTIVE/CHASSIS

	S	S	S
<b>Chassis</b> - Evolution Chassis Freightliner, Caterpillar 7.2L turbo-charged diesel, 350-hp, rear radiator, Allison 6-speed electronic 3000 MH transmission, ZF-IFS front air suspension, NeWay® rear air suspension, 160-amp. alternator, 4-wheel ABS, exhaust brake	S		
<b>Chassis</b> - Evolution Chassis Freightliner, Cummins ISL 8.9L turbo-charged diesel, 400-hp, side radiator, Allison 6-speed electronic 3000 MH transmission, ZF-IFS front air suspension, NeWay rear air suspension, 160-amp. alternator, 4-wheel ABS, engine compression brake		S	S
<b>Air Accessory Manifold</b> quick connect, 50' air hose, pressure gauge, manual air shutoff, <b>Leveling Jacks</b> HWH® hydraulic, manual control, <b>Tire Tools</b> wrench & leverage bar, <b>Trailer Hitch<sup>1</sup></b> 10,000-lb. drawbar/500 lbs. max. vertical tongue weight & wiring, 7-pin connector, <b>Wheels</b> stylized aluminum	S	S	S
<b>Leveling Jacks</b> hydraulic, automatic controls	O	O	O

## CAB AREA & DRIVER CONVENIENCES

	S	S	S
<b>Cab Seats</b> (fabric) armrests, footrest (passenger), lumbar support, multi-adj. slide/recline & swivel, <b>Compass</b> electronic w/outdoor thermometer, <b>Console Center Cabinet</b> , <b>Cruise Control</b> , <b>Defroster Fans</b> aux. built-in, 2-speed w/instrument panel switch, <b>Exhaust Brake Control</b> , <b>Floor Mat</b> (driver) carpet, <b>Freightliner Information Center</b> (see Freightliner's Owner's Manual), <b>Map Lights</b> , <b>Monitor System</b> rearview, color, single camera & one-way audio, Sony, <b>Power Door Locks</b> keyless entry w/remote, <b>Powerpoints (3)</b> 12-volt DC, <b>Shades</b> (front) wraparound, pleated w/pull cords, light-filtering, cab windows, <b>Steering Wheel</b> custom, SmartWheel™ w/power-assist, tilt, <b>Sunvisors (3)</b> powered (40FD-2), <b>Trim Panel</b> driver & passenger sides, <b>Window</b> (driver) full-slider w/screen, dual-glazed, <b>Window</b> (passenger) partial slider w/screen, dual-glazed, <b>Windshield Wipers</b> intermittent, pantograph arms	S	S	S
<b>Cab Seats</b> (leather w/vinyl surround), <b>Cab Seats</b> 6-way power-assist, driver & passenger, <b>Cab Seats</b> 6-way power-assist, driver, <b>GPS Navigation System</b> , <b>Spotlight</b> roof-mounted w/wireless remote, <b>Trip Computer</b> TripTek, <b>Video Camera System</b> side-mounted cameras, turn signal activated FP	O	O	O

## ENTERTAINMENT

	S	S	S
<b>CB Prep</b> antenna, antenna lead, 12-volt DC power supply, <b>Entertainment Center</b> (exterior) AM/FM radio, CD player w/remote, DC receptacle, AC duplex receptacle, TV jack, radio antenna, speakers (2), lockable compartment, <b>Home Theater Sound System</b> DVD/VCR, receiver, amplifier, speakers (5), subwoofer, Sony, <b>RV Radio</b> (cab) AM/FM/stereo/CD, remotes, roof-mounted flexible rubber antenna, speakers (4), weather band, Sirius Satellite ready, <b>Radio Power Switch</b> main/aux. battery, <b>Satellite System Ready</b> , <b>Telephone</b> input & interior jacks, <b>TV Enhancement Package</b> antenna (amplified), interior jack(s), coax wiring, cable input, exterior jack, reminder light, portable satellite dish hookup, <b>Video Selection System</b>	S	S	S

Standard - S Optional - O

36RD 40FD 40KD

	36RD	40FD	40KD
<b>CB Radio</b> , <b>Compact 10-disc Changer</b> w/remote, <b>Radios (4)</b> 2-way, <b>Satellite Dish Antenna</b> RV digital, manual, elevation sensing unit, <b>Satellite Dish Antenna</b> RV digital, power, <b>Satellite Dish</b> RV digital, in-motion, King-Dome, <b>Satellite Radio</b> antenna, docking port, receiver, Sirius, includes six-month paid subscription (NA in Canada), <b>Stereo System</b> (bedroom) AM/FM CD player, Audiovox®, recessed cube speakers (2), bass speaker, alarm clock	O	O	O
<b>Entertainment Center w/TV &amp; DVD</b> (exterior) AM/FM radio, DVD w/remote, DC receptacle, AC duplex receptacle, TV 20" AC color, stereo w/remote, flat-face, Sony, speakers (2), bass speaker, storage compartment	O	O	O
<b>TV 20"</b> AC color, bedroom, flat-face, LCD, stereo w/remote, remote extenders, Sharp	S	S	S
<b>TV 27"</b> AC color front cabinet, flat-face, stereo w/remote, Sony	S		S
<b>TV 30"</b> AC color front slide-out entertainment center, flat-face, stereo w/remote, Sony		S	
<b>TV 32"</b> AC color front cabinet, flat-face LCD, stereo w/remote, Sony	O		O
<b>Fireplace</b> electric		O	

## INTERIOR

	S	S	S
<b>Ceiling</b> vinyl, <b>Curtain</b> front wraparound, pleated w/pull cords, <b>Light</b> wall lamp, <b>Lights</b> ceiling w/wall switches, incandescent, <b>Lights</b> fluorescent, recessed, galley, dinette, lounge w/2-way wall switches, <b>Lights</b> reading, aux., <b>Picture(s)</b> , <b>Shades</b> pleated, day/night, blackout, <b>Sliding Stepwell Cover Panel</b> powered, <b>Wainscoting</b> w/chair rail, <b>Windows</b> dual-glazed/thermo-insulated, flush-mounted	S	S	S
<b>Fan</b> ceiling, lounge	O	O	O

## CABINERY

	O	O	O
<b>Concert Cherry</b> , <b>Honey Cherry</b> , <b>Portsmouth Oak</b> or <b>Washed Maple</b> stile-and-rail construction w/raised-panel inserts	O	O	O

## COUNTERTOPS

	S	S	S
<b>Solid-Surface</b> w/back splash, galley & bath, Corian	S	S	S

## FLOORCOVERING

	S	S	S
<b>Carpeting</b> w/pad, <b>Ceramic Tile</b> galley, bath & cab	S	S	S

## FURNITURE

	O	O	O
<b>BenchMark</b> (fabric) full comfort dinette w/access to storage below, child-seat tether anchor	O	O	O
<b>Dining Table &amp; Chairs</b> (2) freestanding, (2) folding, oval freestanding table (40FD & 40KD)	S	S	S
<b>J-Lounge</b> (fabric or leather) access to storage below, throw pillows			O
<b>J-Lounge</b> (leather 70" x 60"), Rest Easy		O	
<b>Lounge Chair</b> (leather) Euro w/ottoman	S	S	
<b>Lounge Chair</b> (leather) & <b>Table</b> Euro recliner w/ottoman			O
<b>Multifunction Table &amp; Chairs</b> (2) freestanding, (2) folding, table lamp, legless table w/solid-surface top	O	O	O
<b>Rest Easy</b> (fabric 75" x 60") multi-position lounge, fold-down armrest w/beverage holder		S	S
<b>Rest Easy</b> (fabric 75" x 70") multi-position lounge, dual trundles, throw pillows	S		
<b>Rest Easy</b> (leather 75" x 60") multi-position lounge, fold-down armrest w/beverage holder		O	O
<b>Rest Easy</b> (leather 75" x 70") multi-position lounge, dual trundles	O		
<b>Rest Easy</b> (fabric or leather 75" x 60") multi-position lounge, dual recliners	O	O	O
<b>Sofa</b> (fabric 48" x 70") access to storage below, throw pillows, removable armrests (2)			S
<b>Sofa</b> (leather 48" x 70") access to storage below, throw pillows, removable armrests (2)			O

## GALLEY

	S	S	S
<b>Faucet</b> single-control w/pullout sprayer, Moen®, <b>Lights</b> fluorescent ceiling & under cabinet, <b>Microwave/Convection Oven</b> w/exterior vent range fan, residential 30" Sharp, <b>Pantry</b> , <b>Range Cover</b> flush-mounted (countertop material), <b>Range Top</b> 3-burner w/storage below, recessed, sealed burners, Amana®, <b>Refrigerator/Freezer</b> large double-door w/icemaker, Norcold®, <b>Roof Vent</b> insulated, powered ventilator fan, <b>Silverware Tray</b> wood, <b>Sink</b> double-bowl, molded w/sink covers (countertop material), <b>Water Purification System</b> Everpure	S	S	S

# 2006 VECTRA SPECIFICATIONS

Standard - S Optional - O	36RD	40FD	40KD
<b>Dishwasher</b> drawer-style	O	O	O
<b>Island Cabinet</b> w/solid-surface countertop	S	S	
<b>Island Storage Bin</b> large, roll-out			S
<b>Microwave/Speedcook Oven</b> w/range fan, residential 30" G.E. Advantium, <b>Range</b> 3-burner w/large oven, glass door w/storage below, recessed, sealed burners, Amana, <b>Refrigerator/Freezer</b> 4-door w/ice maker, Norcold, <b>Stainless Steel Appliance Package</b>	O	O	O

## BATH

<b>Cabinet</b> lavatory, <b>Cabinet</b> linen, <b>Cabinet</b> medicine, <b>Faucet(s)</b> (lavatory) single-control, Moen, <b>Faucet</b> (shower) single-control w/ixed showerhead, <b>Light</b> shower, <b>Light</b> fluorescent, recessed, <b>Lights</b> makeup, <b>Roof Vent</b> insulated, power, private toilet room, <b>Shower</b> w/wall surround, <b>Shower Door</b> textured glass, <b>Sink</b> oval, <b>Toilet</b> (porcelain) w/foot pedal	S	S	S
<b>Chair Rail</b>	S		
<b>Magazine Rack</b>		S	
<b>Showerhead</b> handheld			O
<b>Shower Package</b> fold-down shower seat, handheld showerhead	O	O	
<b>Mirror</b> private toilet room		S	

## BEDROOM

<b>Bed</b> queen, Serta® innerspring w/underbed storage, bedspread, pillows, throw pillows, <b>Cabinet</b> wardrobe, carpeted floor, mirrored doors, shelves (NA 36RD), light, wire shelf w/clothes rod, <b>Headboard</b> , <b>Light(s)</b> decorative wall lamp(s), <b>Lights</b> reading, halogen, <b>Light</b> decorative ceiling w/dimmer, <b>Nightstand(s)</b> , <b>Powerpoint</b> 12-volt DC receptacle	S	S	S
<b>Bed</b> Sleep Number queen-sized mattress by Select Comfort, <b>Fan</b> ceiling	O	O	O
<b>Bed</b> Sleep Number king-sized mattress by Select Comfort			O
<b>Cabinet</b> lavatory, <b>Cabinet</b> medicine, <b>Faucet</b> (lavatory) single-control, Moen, <b>Lights</b> makeup, <b>Sink</b> oval w/cover			O
<b>Chair</b> (fabric) lounge, w/ottoman, Flexsteel			S
<b>Chest of Drawers</b>			S
<b>Hamper</b> cedar-lined bottom		S	
<b>Mirror(s)</b>	S		
<b>Vanity Cabinet</b>	S	S	

## EXTERIOR

<b>Air Horns</b> roof-mounted, <b>Awning</b> patio, entrance door, electric, <b>Awning Rails</b> w/rain gutters, <b>Door</b> entrance w/separate screen door w/rolldown screen, deadbolt lock, remote & touch-pad entry, <b>Entrance Door Step</b> double, electric w/doorjamb switch, <b>Full-Body Paint Options</b> with double clearcoat finish, Prairie Fire, Canyon Stone, Valley Mist, <b>Ladder</b> , <b>Lights</b> fog lamps, <b>Light</b> porch w/interior switch, <b>Light</b> under hood, <b>Lights</b> compartment, <b>Light</b> service, driver side, <b>Lights</b> aux. docking lamps, <b>Locking Fuel-Fill Doors</b> , <b>Mirrors</b> electric remote w/defrost, chrome head, full-body paint color arms, turn signal, <b>Mudflaps</b> rear, <b>Receptacle</b> AC duplex, <b>Sidewall Skin</b> one-piece smooth fiberglass, high-gloss, <b>Storage Compartments</b> smooth valance panels, trunk liner, gas cylinders, TriMark® KeyOne System, paddle latch, lights, power locks, fold-up shelf, designated spare tire storage area (tire not included)	S	S	S
<b>Awning</b> windows, <b>Awning</b> sunscreen, patio, <b>Compartment Tray</b> slide-out, <b>Mud Guard</b> full-width, <b>Spotlight</b> w/wireless remote, <b>Undercoating</b> , <b>Front Exterior Protective Mask</b>	O	O	O

a The height of each model is measured to the top of the tallest standard feature and is based on the curb weight of a typically equipped unit. The actual height of your vehicle may vary by several inches depending on chassis or equipment variations. Please contact your dealer for further information.

b Vectra floorplans feature a wide-body design — over 96" In making your purchase decision, you should be aware that some states restrict access on some or all state roads to 96" in body width. Before making your purchase decision, you should confirm the road usage laws in the states of interest to you.

c The load capacity of your motor home is designated by weight, not by volume, so you cannot necessarily use all available space when loading your motor home. d Capacities are based on measurements prior to tank installation. Slight capacity variations can result due to installation applications.

e Capacities shown are tank manufacturer's listed water capacity (W.C.). Actual filled LP capacity is 80% of listing due to overfilling prevention device on tank.

	36RD	40FD	40KD
<b>Refrigerator/Freezer</b> portable, requires slide-out tray option	O	O	O
<b>Storage Box</b> slide-out, upper shelf & fold-down door, <b>Step Ladder</b> folding		O	O

## SYSTEMS

<b>Automotive Heater/AC</b> , <b>Aux. Start Circuit</b> , <b>Batteries (3)</b> (coach) deep-cycle, <b>Battery</b> (coach) disconnect system, manual, <b>Battery Charge Control</b> automatic dual, <b>Central Air Heat Pump</b> , <b>Drain</b> 1 1/2" water tank, <b>Electrical Distribution System</b> AC & DC breaker panels, 50-amp., <b>Furnace</b> 40,000 BTU, two-stage, primary, <b>Generator</b> 7,500-watt, Onan Quiet Diesel, <b>Generator/Shoreline Automatic Changeover Switch</b> , <b>Converter/Inverter/Charger</b> DC/AC, 2,000-watt w/remote panel, <b>OnePlace</b> systems center, wall-mounted, PowerLine energy management display, courtesy light, battery digital voltmeter, generator hourmeter gauge, generator start/stop switch, heating and A/C thermostat, holding tank levels, LP tank level, solar panel/battery charger light, water heater switch, water heater on light & pilot indicator light, water pump switch, water tank level, <b>Power Cord</b> 50-amp., <b>Service Center</b> (drainage/water) drainage valves, holding tank flushing system, city water hookup/tank diverter fill, drain for freshwater system, exterior wash station w/pump switch, gravity water fill, monitor panel, soap dispenser, QuickPort service connection hatch, paper towel holder, portable satellite hookup, 20' sewer hose w/QuickConnect coupling valve, <b>Service Center</b> (electrical) cable inputs, power cord, QuickPort service connection hatch, shoreline/generator automatic changeover switch, telephone input, <b>Solar Panel</b> 10-watt battery charger, <b>Tank</b> flushing system, black tank only, <b>Tank</b> holding, heated compartment, <b>Tank LP</b> , permanent mount w/gauge, <b>TrueAir</b> residential central A/C system, <b>TrueLevel</b> holding tank monitoring system, <b>Water Heater</b> 10-gallon electronic ignition, LP gas/120 VAC w/motoraid, <b>Water System Winterization Package</b> water heater bypass valve & siphon tube, <b>Water Hookup</b> city, <b>Water Pump</b> demand, variable speed, <b>Washer-Dryer Prep</b> , <b>Water Tank Fill</b> pressurized city hookup w/diverter valve, <b>Water Tank Fill Door</b> locking, gravity	S	S	S
<b>Furnace</b> 25,000 BTU, secondary		S	S
<b>Power Cord Reel</b> powered, 12-volt DC, <b>Vacuum Cleaner</b> central, Dirt Devil® <b>Washer-Dryer Combination</b>	O	O	O

## SLIDEOUTS

<b>Slideout Room</b> rear, (wardrobe) w/slideroom cover	S		
<b>Slideout Room</b> rear, (bed) w/slideroom cover		S	S
<b>Slideout Room</b> rear, (vanity) w/slideroom cover	S	S	
<b>Slideout Room</b> front, (sofa/galley) w/slideroom cover, StoreMore	S	S	
<b>Slideout Room</b> front, (sofa/dining) w/slideroom cover, StoreMore			S
<b>Slideout Room</b> front, (chair/refrigerator/dining) w/slideroom cover, StoreMore	S		
<b>Slideout Room</b> front, (sofa/galley) w/slideroom cover			S
<b>Slideout Room</b> front, (TV/dining/refrigerator) w/slideroom cover, StoreMore		S	

## SAFETY

<b>Assist Bar(s)</b> interior, <b>Assist Handle</b> exterior, lighted, acrylic, <b>Bumpers</b> front & rear, <b>Child-Seat Tether Anchor</b> , <b>Detectors/Alarms</b> LP leak, smoke, carbon monoxide, <b>Fire Extinguisher</b> 10 BC, <b>Ground Fault Interrupter</b> , <b>Light</b> high-mount brakelamps, <b>Lights</b> daytime running, <b>Light(s)</b> courtesy w/wall switch(es), <b>Seat Belts</b> cab, 3-point adj., <b>Seat Belts</b> lap (in selected areas), <b>Window</b> escape, <b>Windshield</b> laminated safety glass	S	S	S
<b>Security Vault</b> (bedroom) key lockable	O	O	O

## WARRANTY<sup>9</sup>

<b>12-month/15,000-mile basic limited warranty</b> , <sup>h</sup> <b>36-month/36,000-mile warranty on structure</b> , <sup>h</sup> <b>10-year limited parts &amp; labor warranty on roof skin</b> <sup>h</sup>	S	S	S
--	---	---	---

f Actual towing capacity is dependent on your particular loading and towing circumstances, which includes the GVWR, GAWR and GCWR as well as adequate trailer brakes. Please refer to the Operator's Manual of your vehicle for further towing information.

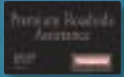
g See separate chassis warranty details provided in Owner's Manual.

h See your dealer for complete warranty information.

Not all items available in combination. See dealer for details.

Winnebago Industries® continuing program of product improvement makes specifications, equipment, model availability, and prices subject to change without notice. Comparisons to other motor homes are based on the most recent information available.

NOT ALL MOTOR HOMES ARE CREATED EQUAL. As you take a closer look, you'll see that there is much more to the Winnebago Vectra than a long list of standard features and compelling floorplans. Beneath it all you'll find a SuperStructure® foundation of strength and durability, and Winnebago Industries' recognized service and warranty support.



We are committed to service. We back our motor homes with the best after-the-sale service in the industry. This includes a 12-month/15,000-mile basic limited warranty; 36-month/36,000-mile warranty on structure; standard 10-year limited parts-and-labor roof skin warranty; and complimentary 24-hour Roadside Assistance Program. TripSaver Fast Track Parts guarantees that in-stock warranty parts ship directly to your dealer within 24 hours. Winnebago Industries has a nationwide dealer service network.



Certified quality. Recreation Vehicle Dealer Association members annually rate RV manufacturers on the quality of their products, and on their sales and service support. Winnebago Industries has achieved the coveted Quality Circle Award every year since its inception, the only RV manufacturer to do so.



Warning: Joining WIT has been known to cause excessive fun. Winnebago-Itasca Travelers (WIT) is a club for owners of Winnebago Industries motor homes. WIT is a great way to meet people and offers you caravans and rallies, local and state group activities, and other benefits for RVers.

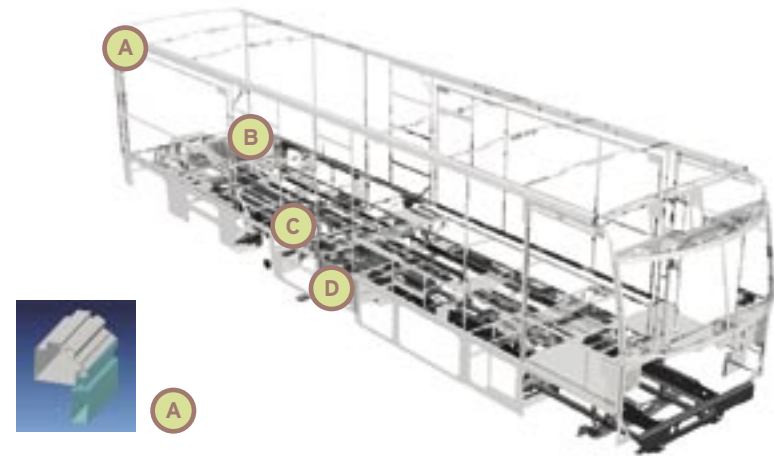


Seat belts are your most important hookup. Always buckle up.

NYSE listing: WGO

Visit [www.winnebagoind.com](http://www.winnebagoind.com) for virtual product tours and the latest product updates.

©2005 Winnebago Industries Inc., Forest City, IA 50436. Printed in USA.



SUPERSTRUCTURE is the term given to Winnebago Industries' structural motor home design and construction. Rather than a single component, it is the culmination of design integration that incorporates steel and aluminum substructures; composite-design laminated floor risers; interlocking joint technology; and Thermo-Panel® floor, roof and sidewalls to form a high-strength, durable vehicle body.

Thermo-Panel manufacturing combines a durable exterior panel with welded aluminum support substructures. The substructures are embedded in a high-density, block-foam insulation core to create a strong, durable, yet lightweight sidewall. Just another Winnebago Industries invention.

- A** Interlocking joint construction utilizes advanced extruded aluminum structural components to create integrated floor-to-sidewall and sidewall-to-roof joints. This design effectively distributes the weight of the walls and roof, making a stronger and more durable body than competitor designs that rely on screws to carry the weight.
- B** The foundation substructure assembly is precision-aligned to maximize strength and cross-coach support as well as durability.
- C** Laminated risers feature a welded aluminum core for improved strength and provide a stable base for the floor structure and storage compartments.
- D** Critical steel components are treated using an advanced electrodeposition coating process that provides superior corrosion protection.

One-year-old Winnebago Industries' fiberglass roof



One-year-old competitor's rubber roof



BUILT TO A HIGHER STANDARD.

The Vectra features a crowned, one-piece fiberglass roof skin backed with a 10-year limited parts-and-labor roof skin warranty. Fiberglass offers superior strength, attractiveness and durability compared to rubber roofs found on many competitive models. Over time, rubber roofs are susceptible to chalking, streaking and degradation, and have less puncture and tear resistance than fiberglass.