

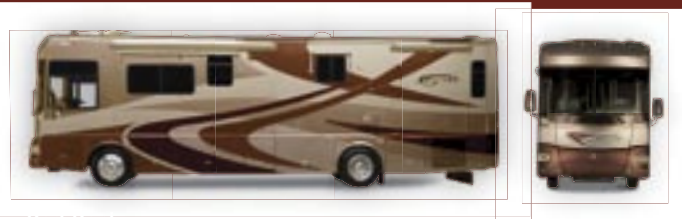
## EXTERIOR DECOR



Rear



Midnight



Red Rock



WINNEBAGOIND.COM Visit us on the web for more info on all of our motor homes, latest product updates and a host of web-exclusive content.

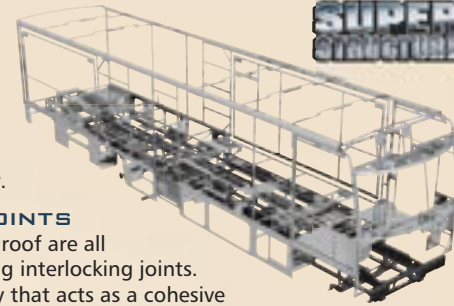


**Built by Winnebago Industries.  
Built to last.**

*Itasca motor homes are built by Winnebago Industries, the company that defined motor homes. The company that built its reputation on quality construction. The company that transformed the motor home concept into a way of life.*

*Today, Winnebago Industries brings that reputation for quality and its 47-year history of motor home innovation to the design and construction of every motor home. It's all a part of SuperStructure®, our exclusive system of proprietary structural components that instills each motor home with improved strength and durability.*

**SOLID FOUNDATION** Steel and aluminum truss work provides a solid, flat foundation for floors and sidewalls. Winnebago Industries engineers also take special care to distribute the weight of components to ensure proper handling and stability.



### INTERLOCKING JOINTS

The floors, sidewalls and roof are all integrally connected using interlocking joints. This creates a coach body that acts as a cohesive unit for improved strength and durability.

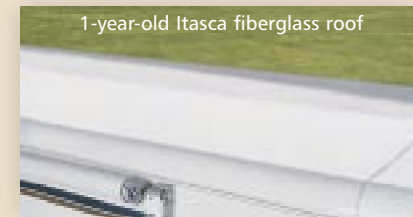
**E-COATING** Winnebago Industries employs an exclusive 12-stage automotive-style dip tank process to apply an advanced electrodeposition coating on critical steel components for unmatched corrosion protection.

**THERMO-PANEL® SIDEWALLS** Invented by Winnebago Industries, Thermo-Panel construction combines a fiberglass panel, high-density, block-foam insulation and aluminum support structures to create some of the most durable, lightweight sidewalls in the industry.

**FIBERGLASS ROOF** Every Itasca motor home features a one-piece fiberglass roof backed by a 10-year limited parts-and-labor roof skin warranty.

**ATTENTION TO DETAIL** Whether it's sending every coach through a high-pressure water tunnel to check for leaks or labeling each individual wire and barcoding parts to save time and frustration during service, Winnebago Industries considers every detail to ensure your Itasca motor home provides you with years of pleasure.

**STRONG AS STEEL** Appliances are secured directly to embedded steel plates for added safety. Windshields are also mounted in steel with an automotive-style sealant; lesser designs use a rubber gasket to mount the windshield in fiberglass.



1-year-old Itasca fiberglass roof



1-year-old competitor's rubber roof

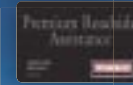
**BUILT TO A HIGHER STANDARD** The Ellipse features a crowned, one-piece fiberglass roof, backed with a 10-year limited parts-and-labor roof skin warranty. Fiberglass offers superior strength, attractiveness and durability over the rubber roofs found on many competitive models which can chalk, streak and degrade over time. Fiberglass also provides increased puncture and tear resistance.



**TAKE A TOUR** We're proud of our process, state-of-the-art facilities and the people who make Winnebago Industries number one. We invite you to visit our factory in Forest City, Iowa, for a first-hand look at the dedication and technology behind every motor home we build.



**RECOGNIZED QUALITY** The Recreation Vehicle Dealer Association annually rates RV manufacturers and awards the Quality Circle award to manufacturers who provide exceptional products, service and support. Winnebago Industries is proud to be the only manufacturer to receive this award every year since its inception.



**COMMITTED TO SERVICE** We back our motor homes with the industry's best service after the sale.

- 12-month/15,000-mile basic limited warranty
- 36-month/36,000-mile warranty on structure
- Standard 10-year limited parts-and-labor roof skin warranty
- Complimentary 24-hour roadside assistance program
- TripSaver Fast Track Parts. TripSaver guarantees that in-stock warranty parts ship directly to your dealer within 24 hours.
- National dealer service network



**WIT CLUB** Itasca owners are like family. Joining the Winnebago-Itasca Travelers is a great way to meet and travel with other Itasca enthusiasts. Members enjoy:

- Caravans and rallies
- Local and state group activities
- RV travel benefits



For Sales and Service Information Contact:



Built proudly by



NYSE listing: WGO

©2005 Winnebago Industries, Inc.

Printed in USA

Seat belts are your most important hookup. Always buckle up.

# 06 ELLIPSE™





# 06 SPECIFICATIONS

WEIGHTS & MEASURES	36LD NEW	36RD NEW	40FD NEW	40KD NEW
Length	36'6"	36'9"	39'11"	39'11"
Exterior Height <sup>1</sup>	12'3"	12'2"	12'3"	12'3"
Exterior Width <sup>2</sup>	8'5.5"	8'5.5"	8'5.5"	8'5.5"
Exterior Storage <sup>3</sup> (cu. ft.)	109.9	122.2	161.8	136.1
Interior Height	7'2"	7'2"	7'2"	7'2"
Interior Width	8'5"	8'5"	8'5"	8'5"
Freshwater Capacity w/Heater <sup>4</sup> (gal.)	106	106	106	106
Holding Tank Capacity - Black/Gray <sup>4</sup> (gal.)	54 / 54	54 / 54	57 / 73	57 / 72
LP Capacity <sup>5</sup> (gal.)	31	31	31	31
Fuel Capacity (gal.)	100	100	100	100
GCWR <sup>6</sup> (lbs.)	39,410	39,410	42,000	42,000
GVWR (lbs.)	29,410	29,410	32,000	32,000
GAWR - Front (lbs.)	10,410	10,410	12,000	12,000
GAWR - Rear (lbs.)	19,000	19,000	20,000	20,000
Wheelbase	228"	228"	267"	267"

AUTOMOTIVE/CHASSIS	36LD	36RD	40FD	40KD
<b>Chassis</b> - Evolution™ Chassis Freightliner®, Caterpillar® 7.2L C7 turbo-charged diesel, 350-hp, rear radiator, Allison® 6-speed electronic 3000 MH transmission, I-beam front air suspension & NeWay® rear air suspension, 160-amp. alternator, 4-wheel ABS, exhaust brake	S	S	S	S
<b>Air Accessory Manifold</b> quick connect, 50' air hose, pressure gauge, manual air shutoff, <b>Leveling Jacks</b> HWH® hydraulic, manual control, <b>Spare Tire</b> storage, <b>Tire Tools</b> wrench & leverage bar, <b>Trailer Hitch</b> <sup>6</sup> 10,000-lb. drawbar/500 lbs. maximum vertical tongue weight & wiring, 7-pin connector, <b>Wheels</b> stylized aluminum	S	S	S	S
<b>Leveling Jacks</b> hydraulic, automatic controls	0	0	0	0

CAB AREA & DRIVER CONVENIENCES	36LD	36RD	40FD	40KD
<b>Cab Seats</b> (UltraLeather HP™) w/3-point adj. seat belts, armrests, lumbar support, multiadj. slide/recline & swivel, Ellipse logo, <b>Compass</b> electronic w/outdoor thermometer, <b>Console Center Cabinet</b> , <b>Cruise Control</b> , <b>Defroster Fans (2)</b> aux. 2-speed w/instrument panel switch, <b>Exhaust Brake Control</b> , <b>Floor Mat</b> (driver) carpet, <b>Freightliner Information Center</b> (see Freightliner's Owner's Manual), <b>Map Lights (2)</b> , <b>Monitor System</b> rearview, b/w, single camera & one-way audio, Audiovox®, <b>Power Door Locks</b> & keyless entry w/remote, <b>Powerpoints (2)</b> 12-volt DC, <b>Shades</b> (front) wraparound, pleated w/wands, light-filtering, cab windows, roller, <b>Steering Wheel</b> custom, black leather, SmartWheel™ w/power-assist, tilt, telescope column, <b>Sunvisors</b> powered, <b>Trim Panel</b> driver & passenger sides, <b>Window</b> (driver) full-slider w/screen, dual-glazed, <b>Window</b> (passenger) partial, vertical slider w/screen, dual-glazed, <b>Windshield Wipers</b> intermittent	S	S	S	S
<b>Cab Seats</b> 6-way power-assist, driver, driver/passenger (avail. w/footrest), <b>GPS Navigation System</b> Alpine, <b>Trip Computer</b> TripTek™, <b>Video Camera System</b> two side-mounted cameras, turn signal activated	0	0	0	0

ENTERTAINMENT	36LD	36RD	40FD	40KD
<b>CB Prep</b> antenna, antenna lead, 12-volt DC power supply, <b>Entertainment Center</b> (exterior) AM/FM radio, CD player w/remote, DC receptacle, AC duplex receptacle, TV jack, radio antenna, speakers (2), lockable compartment, <b>Home Theater Sound System</b> , amplifier, DVD/VCR combo, receiver, speakers (5), subwoofer, Sony® <b>RV Radio</b> ® (cab) AM/FM/Stereo/CD, remotes, roof-mounted flexible rubber antenna, speakers (4), weather band, Sirius® Satellite ready, <b>Radio Power Switch</b> main/aux. battery, <b>Satellite System Ready</b> , <b>Telephone Input</b> interior jacks, <b>TV Enhancement Package</b> antenna (amplified), interior jacks, coax wiring, cable input, exterior jack, reminder light, <b>Video Selection System</b>	S	S	S	S
<b>CB Radio</b> , <b>Compact Multidisc Changer</b> w/remote & 10-disc changer, <b>Radios (4)</b> 2-way, <b>Satellite Dish Antenna</b> RV digital, manual, elevation sensing unit, <b>Satellite Dish Antenna</b> RV digital, power, <b>Satellite Dish</b> RV digital, in-motion, King-Dome® <b>Satellite Radio</b> Sirius, six-month subscription included (NA in Canada), <b>Stereo System</b> (bedroom) AM/FM CD player, clock/radio, Audiovox	0	0	0	0
<b>Entertainment Center w/TV &amp; DVD</b> (exterior) AM/FM radio, DVD w/remote, DC receptacle, AC duplex receptacle, TV AC color, stereo w/remote, 20" flat-screen, Sony® speakers (2), bass speaker, storage compartment	0	0	0	0
<b>Fireplace</b> electric, front slideout entertainment center			0	
<b>TV 20"</b> AC color, bedroom, flat-screen, LCD, stereo w/remote, remote extenders, Viewsonic®		S	S	
<b>TV 20"</b> AC color, bedroom, flat-screen, stereo w/remote, remote extenders, Sony	S			S
<b>TV 27"</b> AC color front cabinet, flat-screen, stereo w/remote, Sony	S	S		S
<b>TV 27"</b> AC color front slideout entertainment center, flat-screen, stereo w/remote, Sony			S	

INTERIOR	36LD	36RD	40FD	40KD
<b>Ceiling</b> vinyl, <b>Light</b> wall lamp, <b>Lights</b> ceiling w/wall switches, incandescent, <b>Lights</b> fluorescent, recessed, galley, dinette, lounge w/2-way wall switches, <b>Lights</b> reading, aux., <b>Shade</b> front wraparound, pleated w/wands, <b>Shades</b> roller, day/night, roof vents package, <b>Sliding Stepwell Cover Panel</b> powered, <b>Windows</b> dual-glazed/thermo-insulated	S	S	S	S
<b>Picture</b>	S		S	

CABINERY	36LD	36RD	40FD	40KD
<b>Concert Cherry</b> or <b>Sierra Maple</b> or <b>Portsmouth Oak</b> or <b>Washed Maple</b> stile-and-rail construction w/arched raised-panel inserts (upper doors only)	0	0	0	0

COUNTERTOPS	36LD	36RD	40FD	40KD
<b>Solid-Surface</b> galley & bath	S	S	S	S

FLOORCOVERING	36LD	36RD	40FD	40KD
<b>Carpeting</b> w/pad, <b>Vinyl Tile</b> galley, bath & cab	S	S	S	S

FURNITURE	36LD	36RD	40FD	40KD
<b>Banquette</b> (fabric) w/throw pillows, access to storage below, <b>Banquette</b> (UltraLeather HP) w/throw pillows, access to storage below	0			
<b>BenchMark™</b> full comfort dinette (fabric) w/access to storage below, child seat tether anchor, storage cabinet 36LD	0	0	0	0
<b>Breakfast Bar</b> w/stools (2), padded seats, backrest	S			
<b>Chair</b> (UltraLeather HP) Euro recliner w/ottoman	0	0	0	
<b>Chair</b> (UltraLeather HP) Euro recliner w/ottoman, end table w/storage				0
<b>Chair</b> (fabric) lounge, hoop-base, recliner/rocker, swivel, slide w/footrest, end table w/storage (36LD)	S	S	S	
<b>Dining Table &amp; Chairs</b> (2) freestanding, (2) folding, oval freestanding table (40FD)	0	S	S	S
<b>J-Lounge</b> (fabric) access to storage below, throw pillows (2)				0
<b>J-Lounge</b> (UltraLeather HP) access to storage below, throw pillows (2)				0
<b>Multifunction Table &amp; Chairs</b> (2) freestanding, (2) folding, legless table		0	0	0
<b>Rest Easy®</b> multi-position lounge (fabric 75" x 60"), removable armrest w/beverage holder	0		S	S
<b>Rest Easy</b> multi-position lounge (fabric 75" x 70") dual trundle, removable armrest w/beverage holder		S		
<b>Rest Easy</b> multi-position lounge (UltraLeather HP 75" x 60"), removable armrest w/beverage holder	0		0	0
<b>Rest Easy</b> multi-position lounge (UltraLeather HP 75" x 70") dual trundle, removable armrest w/beverage holder		0		
<b>Rest Easy</b> multi-position lounge (fabric or UltraLeather HP 75" x 60") dual recliners, removable armrest w/beverage holder	0	0	0	
<b>Rest Easy J-Lounge</b> (UltraLeather HP 70" x 60")			0	
<b>Rest Easy</b> multi-position lounge (fabric 75" x 60"), w/folding dining table, (2) folding chairs, removable armrest w/beverage holder	S			
<b>Rest Easy</b> multi-position lounge (UltraLeather HP 75" x 60"), w/folding dining table, (2) folding chairs, removable armrest w/beverage holder	0			
<b>Sofa</b> (fabric 48" x 70")				S
<b>Sofa</b> (UltraLeather HP 48" x 70")				0

GALLEY	36LD	36RD	40FD	40KD
<b>Countertop</b> w/backsplash, <b>Faucet</b> single-control w/pullout sprayer, Moen® <b>Lights</b> fluorescent on ceiling & under cabinet, <b>Microwave/Convection Oven</b> w/range fan, residential 30", stainless steel, <b>Mirror(s)</b> , <b>Pantry</b> , <b>Powerpoint</b> 12-volt DC receptacle, <b>Range Cover</b> flush-mounted (countertop material), <b>Range Top</b> 3-burner, one high output w/storage below, recessed, sealed burners, stainless steel, Amana® <b>Refrigerator/Freezer</b> large double-door, stainless steel, Norcold® <b>Roof Vent</b> insulated, powered ventilator fan, <b>Silverware Tray</b> , <b>Sink</b> double-bowl, molded w/sink covers (countertop material), <b>Towel Rack</b> wire, <b>Wastepaper Basket</b> , <b>Water Purification System</b> Everpure®	S	S	S	S

## THIS IS LIVING.

The floorplan variety of the Ellipse gives you the option of the classic, front overhead entertainment center or a stand-alone entertainment center in the 40FD. Both configurations include a 27" Sony® flat-screen TV, DVD/VCR combo and the Sony Home Theater Sound System.

For optimal comfort, select the Euro Chair with ottoman by Flexsteel®. All of the furniture can be upgraded with the super soft and durable UltraLeather HP™.

To maintain a comfortable climate, Ellipse comes with floor-ducted heating, ceiling-ducted TrueAir® residential central air conditioning. Compared to roof air conditioning, TrueAir cools 40 percent faster and runs 10 percent quieter. Dual-glazed windows increase the coach's thermal efficiency and come dressed with day/night pleated shades for privacy.



**LIVING AREA** Add a King-Dome® in-motion satellite dish to receive uninterrupted programming on the road.\*

\*Satellite TV requires a subscription. See your dealer for details.



**ENTERTAINMENT CENTER** The stand-alone entertainment center in the 40FD offers an available electric fireplace for added, at-home comfort.



**REST EASY®** This multi-position lounge slides from a sofa to a recliner to a comfortable bed at the touch of a button.



**EURO CHAIR** A Euro Chair with matching ottoman is available on all floorplans.



40KD COPPER CANYON WITH SIERRA MAPLE



### GET COOKING.

For added storage and countertop space, the 36RD and 40FD offer a pullout island cabinet with a solid-surface countertop, while the 40KD features a rollout storage bin. The drawers come with full-extension slides for easy access.

The standard, double-door refrigerator/freezer can be upgraded to a four-door model with icemaker. The pullout pantries are perfect for spices and snacks. Clear, refreshing Everpure® filtered water comes with its own faucet. Other stylish touches include solid-surface countertops and vinyl tile floorcovering.

Your dining options include a legless dining table, the BenchMark full comfort dinette or a multifunction table (NA 36LD).



GALLEY STORAGE



**FULL-EXTENSION DRAWER SLIDES**  
Drawers open fully for easy access.



**DISHWASHER** Add the drawer-style dishwasher to save time cleaning after meals.



**DINER'S CHOICE** Choose between a) the legless dining table with matching chairs, b) the BenchMark™ full comfort dinette, complete with innerspring cushions and a bed conversion, or c) the multifunction table (NA 36LD) that doubles as a computer desk.

# 06 FLOORPLANS



Vinyl Tile Floorcovering

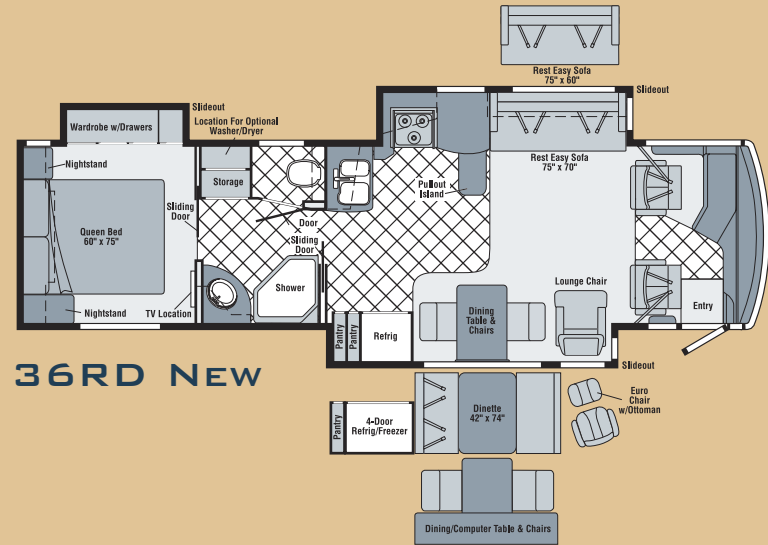


Seat Belts

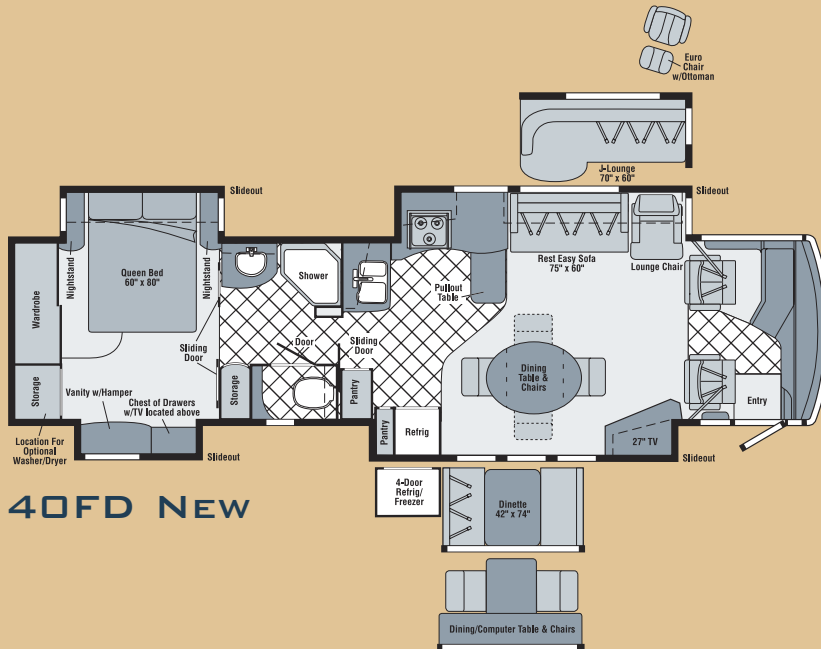
Note: Dimensions shown are for sleeping space only and may vary due to styling differences. Dashed lines denote overhead storage areas.



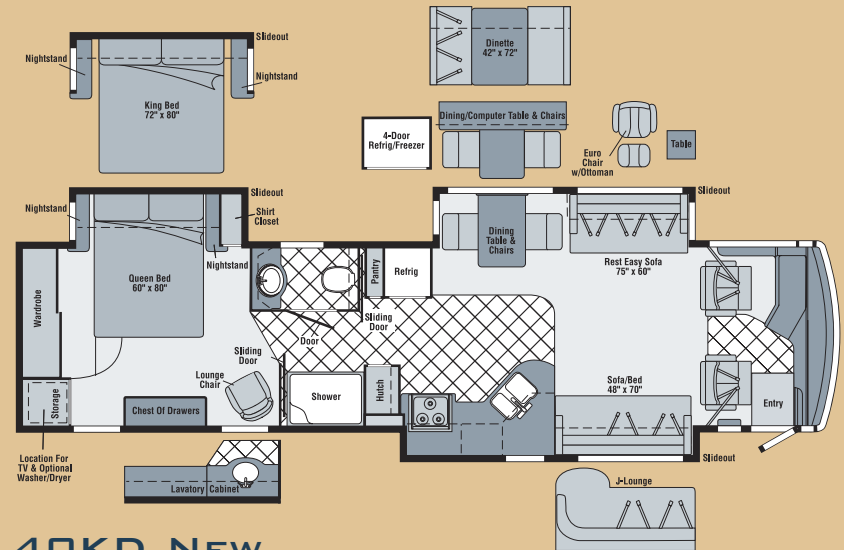
**36LD NEW**  
Available December 2005



**36RD NEW**



**40FD NEW**



**40KD NEW**

# EVOLUTION™ CHASSIS



THE LEADER AT EVERY TURN™



## EVOLUTION CHASSIS

engineers worked closely with Freightliner® to create the Evolution Chassis. This exclusive innovation uses one-piece, formed-steel chassis rails that are 25% thicker than traditional rails for exceptional strength and performance. Its cutting-edge design also

reduces weight. The Evolution Chassis takes the bite out of mountain passes with a powerful 350-hp Caterpillar® C7 diesel engine for the climb and an exhaust brake for the ride down. A tight 55° wheel cut makes the Ellipse one of

## YOU GET MORE WITH THE EVOLUTION CHASSIS:

- 7,500-watt Onan® Quiet Diesel™ generator
- Dual fuel fills
- Available automatic leveling jacks

**AUXILIARY AIR SUPPLY**  
A 50-ft. air hose is great for inflating tires, balls or toys.



**NEWAY® REAR AIR SUSPENSION**  
The smooth ride is a result of the air spring suspension over each rear tire that cushions the vehicle body from bumps in the road.





## SPACIOUS BEDROOM.

Every Ellipse bedroom features a rear slideout with a Vantage Point® Sleep Number® bed by Select Comfort.™ The slideout in the 40KD creates a bedroom large enough to accommodate an available king-size bed by Select Comfort.®

The bedroom also contains a 20" flat-screen TV. It is wired to the front DVD/VCR combo which can be operated with your bedroom remote. A 20" LCD screen in the 36RD and 40FD conserves space and provides an ultra-clear picture. Add the ceiling fan to stay cool on hot summer nights.

The bathroom includes a number of elegant appointments like vinyl tile floorcovering and a textured glass shower door. You'll also appreciate practical features like a flexible showerhead and a water heater that runs off LP or electric power. Enjoy the space-saving convenience of the available central vacuum anywhere in the coach.



**BATH**  
The Moen Posi-Temp® control regulates consistent water temperature, even if water pressure fluctuates.



**AVAILABLE WASHER/ DRYER**  
Includes multiple time and temperature cycles to accommodate most fabrics.



**VANTAGE POINT SLEEP NUMBER BED** Digital remotes let you adjust each side of the available Sleep Number bed independently to your ideal level of comfort and support. Your Sleep Number – the Key to a Perfect Night's Sleep.™



**HIT THE ROAD.**

If you share driving duties, you'll love the convenience of the SmartWheel™ steering wheel. It includes controls for key functions and quickly tilts and telescopes into perfect position for any driver. High-back cab seats enhance the experience by adjusting on optional six-way pedestals.

You'll have confidence backing your Ellipse when using the Audiovox® rearview monitor. You can also add a video camera system that provides views of the sides of the coach when turning.

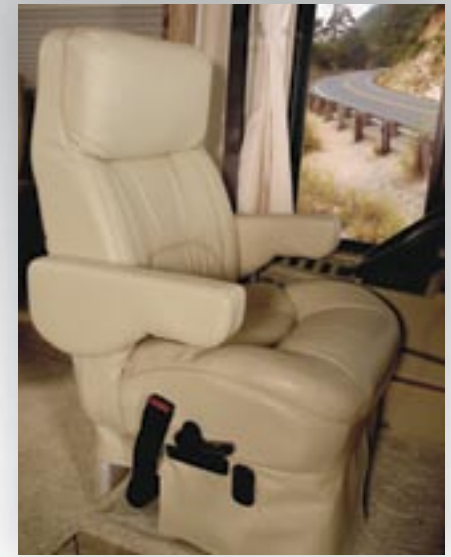
The Sirius® Satellite-ready RV Radio® gives you the option of listening to AM/FM radio, CD player or the weather band. A handheld remote and steering wheel remote let you operate the radio with ease from anywhere in the coach.

Upgrade the RV Radio to include Sirius Satellite radio package\* with over 120 channels of crystal-clear programming. This package comes with a complimentary six-month subscription.

\*Sirius Satellite radio not available in Canada.



**DASH** You'll find everything you need at your fingertips, including tachpad



**DRIVER'S SEAT** UltraLeather HP



**ONEPLACE™** A convenient monitor panel houses frequently used switches, gauges and levels.



**TWO-WAY RADIOS**



**TRIPTEK™**

A trip computer that provides fuel economy, and fuel economy, and fuel economy.



**POWERLINE®** This energy management system monitors electrical usage and automatically cycles appliances on and off to prevent tripped circuit breakers.



**TRUEAIR** The TrueAir residential central air conditioning system is located in the basement, which provides a low vehicle profile and reduces interior noise. The advanced Coleman®-Mach® cooling unit cools 40% faster and runs 10% quieter than roof units.



**SMART STORAGE.™**

By rethinking the way storage space is utilized, we created Smart Storage – a better way to store your gear. It's the reason you'll find handy straps and attachment points for all of your motor home tools. It also led to the development of a custom storage sleeve for the folding ladder so it is there when you need it and out of the way when you don't (available on the 40FD and 40KD).

The StoreMore® slideout system is standard on every model. You also get the convenience of an available slideout storage box on the 40FD and 40KD. Tailgaters will love the electric awning which can be enhanced with a sunscreen for extra protection on bright summer days.

For fast hookups, the service center includes the QuickConnect® coupling valve and the QuickPort® service connection hatch that allows the door to close with hookups still connected. An exterior wash station and portable satellite dish hook-up are also located in the service center.



**STOREMORE®** The StoreMore slideout system allows exterior storage compartments to move in and out of the way when you need them.



**SLIDEOUT TRAY** A Smart Storage



**SERVICE CENTER**

QuickConnect®  
QuickPort®  
Wash Station  
Satellite Dish Hook-up



**ENTERTAINMENT CENTER**

AM/FM Stereo  
CD Player  
DVD Player  
Satellite TV



**LADDER** The



**KEYLESS ENTRY**



**TRUELEVEL** To eliminate the guesswork





**A BETTER DIESEL MOTOR HOME.**

Itasca proudly introduces the Ellipse, an all-new diesel pusher built on our exclusive Evolution™ Chassis. Four distinct models, including a quad-slideout design, allow more diesel enthusiasts to experience this revolutionary chassis than ever before. Its formed-steel chassis rail construction works in conjunction with our SmartSpace™ design

philosophy to bring you more amenities and exceptional mid-section storage. Factor in features like solid-surface countertops, vinyl tile floorcovering, opposing flat floors in the living room, and over 7'2" of interior ceiling height and you'll be proud to call the 2006 Itasca Ellipse your home on the road.

GALLEY	36LD	36RD	40FD	40KD
Countertop Extension flip-up		\$		
Island Cabinet w/solid-surface countertop, rollout		\$	\$	
Island Storage Bin large, rollout				\$
Dishwasher drawer-style, Range 3-burner, one high output, w/large oven, glass door w/storage below, recessed, sealed burners, stainless steel, Amana, Refrigerator/Freezer large double-door w/icemaker, stainless steel, Norcold, Refrigerator/Freezer 4-door w/icemaker, stainless steel, Norcold	0	0	0	0

BATH	36LD	36RD	40FD	40KD
Cabinet lavatory, Cabinet linen, Cabinet medicine, Countertop w/back splash, Faucet (lavatory) single-control, Moen, Faucet (shower) single-control w/ixed showerhead, Moen Posi-Temp, Light shower, Light fluorescent, recessed, Lights makeup, Robe Hook, Roof Vent insulated, powered ventilator fan, private toilet room, Shower w/wall surround, Shower Door textured glass, Sink oval, Toilet porcelain w/foot pedal	\$	\$	\$	\$
Magazine Rack			\$	
Showerhead hand-held	0		0	
Shower Package fold-down shower seat, hand-held showerhead		0	0	

BEDROOM	36LD	36RD	40FD	40KD
Bed queen, Sleep Number® mattress by Select Comfort™ w/underbed storage (NA 36LD, 40FD), bedspread, pillows, throw pillows, Cabinet wardrobe, carpeted floor, Headboard, Lights reading, Light decorative ceiling w/dimmer, Nightstands, Powerpoint 12-volt DC receptacle, Wardrobe cedar lined, carpet, clothes rod, shelf, light	\$	\$	\$	\$
Ceiling Fan	0	0	0	0
Bed Sleep Number king-size mattress by Select Comfort				0
Cabinet lavatory, Cabinet medicine, Faucet (lavatory) single-control, Lights makeup, Sink oval				0
Chair (fabric) lounge, Flexsteel®			\$	
Chest of Drawers	\$		\$	
Hamper		\$		
Light decorative wall lamp	\$		\$	
Vanity Cabinet		\$		

EXTERIOR	36LD	36RD	40FD	40KD
Awning slideroom cover, Awning Rails w/rain gutters, Door entrance w/movable separate screen door, deadbolt lock, keyless entry w/remote, Entrance Door Step double, electric w/doorjamb switch, Full-Body Paint Options Pearl, Midnight, Red Rock (w/protective film below entry door), Ladder, Lights fog lamps, Light porch w/interior switch, Light under hood, Lights compartment, Light service, driver side, Lights auxiliary docking lamps, Locking Fuel-Fill Doors, Mirrors electric remote w/defrost, chrome head, turn signal, Mudflaps (2) rear, Receptacle AC duplex, Sidewall Skin one-piece smooth fiberglass, high-gloss, Storage Compartments smooth valance panels, trunk liner, gas struts, TriMark® KeyOne™ System, paddle latch	\$	\$	\$	\$
Awning Package patio w/wind sensor & remote, entrance door, electric	0	0	0	0
Awning Sunscreen patio (requires electric awning package)	0	0	0	0
Air Horns roof-mounted, chrome, dual, Awnings windows, acrylic, Mud Guard full-width, Undercoating, Front Exterior Protective Mask	0	0	0	0
Refrigerator/Freezer portable w/slideout tray	0	0	0	0
Storage Box slideout, upper shelf & fold-down door			0	0
Step Ladder folding			0	0

SYSTEMS	36LD	36RD	40FD	40KD
Automotive Heater/A/C, Aux. Start Circuit, Batteries (3) (coach) deep-cycle, Battery (coach) disconnect system, Battery Charge Control automatic dual, Central Air Heat Pump, Drain 1½" water tank, Electrical Distribution System AC & DC breaker panels, Furnace 40,000 BTU low-profile, primary, Generator 7,500-watt, Onan® Quiet Diesel™ Generator/Shoreline Automatic Changeover Switch, Converter/Inverter/Charger DC/AC, 2,000-watt w/remote panel, OnePlace® systems center, wall-mounted, PowerLine® energy management display, battery digital voltmeter, courtesy light, generator hourmeter gauge, generator start/stop switch, heating & A/C thermostat, holding tank levels, LP tank level, solar panel/battery charger light, water heater switch, water heater on light & pilot indicator light, water pump switch, water tank level, Power Cord 50-amp., superflex, Service Center (drainage/water) drainage valves, holding tank flushing system, city water hookup/tank diverter fill, drain for freshwater system, exterior wash station w/pump switch, soap dispenser, QuickPort™ service connection hatch, paper towel holder, portable satellite hookup, 10' sewer hose w/QuickConnect™ coupling valve, Service Center (electrical) cable inputs, power cord, QuickPort service connection hatch, shoreline/generator automatic changeover switch, telephone input, Solar Panel 10-watt battery charger, Tank flushing system, black tank only, Tank holding, heated compartment, Tank LP, permanent mount w/gauge, TrueAir® residential central air conditioning system, TrueLevel™ holding tank monitoring system, Water Heater 10-gallon electronic ignition, LP gas/120 VAC w/motoraid, Water System Winterization Package water heater bypass valve & siphon tube, Water Hookup city, Water Pump demand, variable speed, switches, indicator light, Washer/Dryer Prep, Water Tank Fill pressurized city hookup w/diverter valve, Water Tank Fill Door locking, gravity	\$	\$	\$	\$
Furnace 25,000 BTU, low-profile, secondary			\$	\$
Vacuum Cleaner central, Dirt Devil®, Washer/Dryer Combination	0	0	0	0

SLIDEOUTS	36LD	36RD	40FD	40KD
Slideout Room rear (vanity/chest) w/slideroom cover			\$	
Slideout Room rear (bed) w/slideroom cover	\$	\$	\$	
Slideout Room rear (wardrobe) w/slideroom cover		\$		
Slideout Room front (sofa/dinette) w/slideroom cover, StoreMore®				\$
Slideout Room front (sofa/galley) w/slideroom cover, StoreMore		\$	\$	
Slideout Room front (sofa/lounge) w/slideroom cover, StoreMore	\$			
Slideout Room front (refrigerator/dining) w/slideroom cover, StoreMore		\$		
Slideout Room front (lounge/galley) w/slideroom cover, StoreMore				\$
Slideout Room front (breakfast bar/galley) w/slideroom cover, StoreMore	\$			
Slideout Room front (TV/dining/refrigerator) w/slideroom cover, StoreMore			\$	

SAFETY	36LD	36RD	40FD	40KD
Assist Bars interior, Assist Handle exterior, acrylic w/logo, Bumpers front & rear, Child Seat Tether Anchor, Detectors/Alarms LP leak, smoke, carbon monoxide, Fire Extinguisher 10 BC, Ground Fault Interrupter, Light high-mount brakelamps, Lights daytime running, Lights courtesy w/wall switches, Seat Belts cab, 3-point, Seat Belts lap (select areas), Window escape, Windshield laminated safety glass	\$	\$	\$	\$

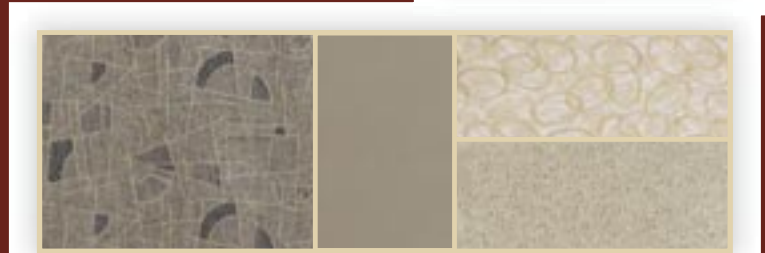
WARRANTY <sup>1</sup>	36LD	36RD	40FD	40KD
12-month/15,000-mile basic limited warranty <sup>2</sup> ; 36-month/36,000-mile warranty on structure <sup>3</sup> ; 10-year limited parts & labor warranty on roof skin <sup>4</sup>	\$	\$	\$	\$

- The height of each model is measured to the top of the tallest standard feature and is based on the curb weight of a typically equipped unit. The actual height of your vehicle may vary by several inches depending on chassis or equipment variations. Please contact your dealer for further information.
  - Ellipse floorplans feature a wide-body design — over 96". In making your purchase decision, you should be aware that some states restrict access on some or all state roads to 96" in body width. Before making your purchase decision, you should confirm the road usage laws in the states of interest to you.
  - The load capacity of your motor home is designated by weight, not by volume, so you cannot necessarily use all available space when loading your motor home.
  - Capacities are based on measurements prior to tank installation. Slight capacity variations can result due to installation applications.
  - Capacities shown are tank manufacturer's listed water capacity (W.C.). Actual filled LP capacity is 80% of listing due to overfilling prevention device on tank.
  - Actual towing capacity is dependent on your particular loading and towing circumstances which includes the GVWR, GAWR, and GCWR as well as adequate trailer brakes. Please refer to the Operator's Manual of your vehicle for further towing information.
  - See separate chassis warranty details provided in Owner's Manual.
  - See your dealer for complete warranty information.
- \$ Standard  
0 Optional
- Not all items available in combination. See dealer for details.  
Winnebago Industries® continuing program of product improvement makes specifications, equipment, model availability, and prices subject to change without notice. Comparisons to other motor homes are based on the most recent information available.

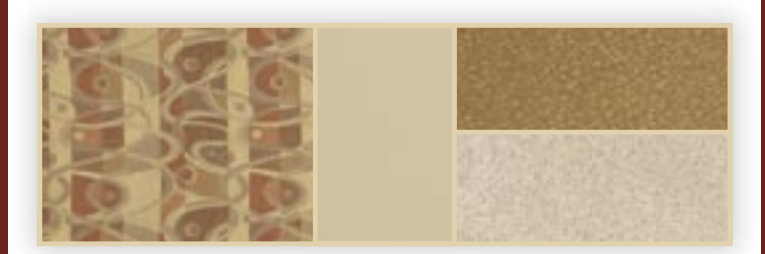
**INTERIOR DECOR**

Choose from three fabric selections and four wood choices with hidden hinges.

SOFA	LEATHER	BEDSPREAD
		CARPET



Arctic Frost w/available Papyrus

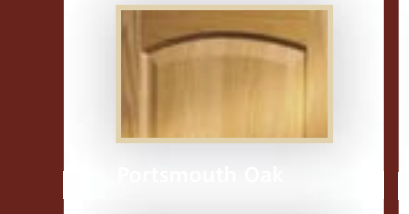


Copper Canyon w/available Dan

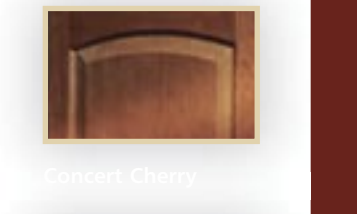


Portsmouth Oak

Concert Cherry



Sierra Maple



Washed Maple