



It's called the Minnie.
But it's loaded with features to the max.





Wide-open spaces.
 There's nothing "mini" about the Minnie, thanks to its innovative design and the StoreMore® slideout system (found on the 31C). The StoreMore slideout system not only adds living space and cabinet space, it increases convenience because exterior compartments extend with the slideroom for easy access.

Interior lighting is plentiful, and is controlled by large, easy-to-operate, wall-mounted switches placed right where you need them. And you'll enjoy the feeling of privacy provided by Minnie's day/night pleated window shades.

31C-Bluestone

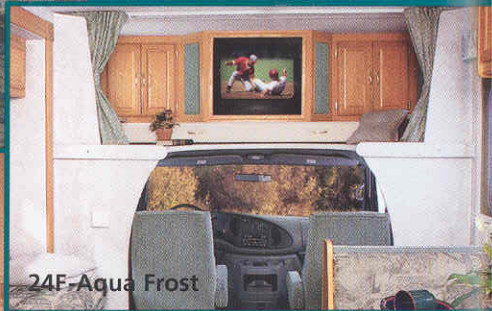
Such a pleasure to drive, and so easy to own: the Winnebago Minnie.

Some companies strive to meet your expectations. At Winnebago Industries, we aim to exceed them. And such is the case with our Winnebago Minnie—a Class C motor home that's loaded with features you'd expect to find in more expensive motor homes.

You can immediately see the quality and sense the value we've brought to Minnie as you notice the richness of its oak cabinetry, which features a catalyzed finish typically found in the kitchens of finer homes.

Less noticeable—but equally valuable—are smart design features such as ceiling-ducted air conditioning, for improved interior comfort. We've thought through all the details, from attractive Stitchcraft furniture all the way to our one-piece fiberglass roof, which provides strength, durability and long-lasting good looks.

And with so many choices, you'll be sure to find a Minnie that's just right for you.



24F-Aqua Frost

TV, VCR, A-OK.
 You'll like what you're seeing when you have your Minnie equipped with the available 25" TV and VCR mounted in the overhead cab area. There's also additional storage, and an available inverter that provides 110-volt power to the TV and VCR when shoreline or generator power isn't in use.



29B-Sandstone

Big bedroom.
 All new for 2002, the 29B features a rear slideroom, creating an impressive bedroom area. Storage is plentiful with deep overhead cabinets, a large, mirror-doored wardrobe with drawers and underbed storage as well. The vanity area includes a flip-up mirror and doubles as a handy place to write letters or tap on a laptop computer.



Now you're cooking.

You'll prepare wonderful meals with ease in the galley, complete with a three-burner Magic Chef® range/oven and a built-in microwave. The 31C features a pull-out cutting board, sink cover and flip-up countertop extension that provides additional work space. Also available on the 31C is a 19" TV plus VCR in the galley for comfortable viewing from either the dinette or couch.

Plenty of bath room.

Minnie's bath has ample storage and a convenient residential-height toilet with foot-pedal flush. The shower has a folding door and, in most models, a skylight.



Easy hookup.

Minnie's service center is conveniently located and easy to use. The lower portion of this compartment on the 24F, 29B and 31C is enclosed for added convenience.



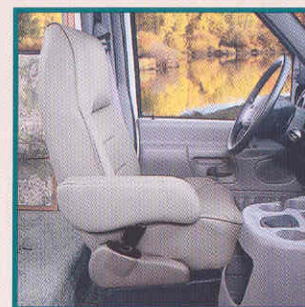
This radio's a "wow."

Our engineers worked closely with the manufacturer to create the RV Radio designed specifically for RV use. It includes an AM/FM stereo cassette/CD player with a built-in weather band for immediate weather updates at the touch of a button. Its large control knobs and buttons are easy to operate. (Standard on Ford chassis models only.)



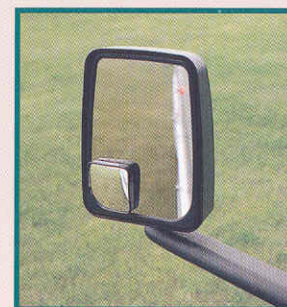
Smart dash.

Minnie's cab features conveniently positioned controls and power windows and door locks. The center console includes cupholders, a storage tray and a large tip-out storage compartment. Driver and passenger-side airbags are standard on Ford chassis models.



Built for comfort.

The high-back Stitchcraft cab seats are multi-position and feature fixed lumbar support for added comfort. Select the available leather shown here for an upscale look and feel.



A better look.

Minnie's exterior mirrors feature a large field of vision—so important when parking or changing lanes. The mirrors are also available with electric controls, making adjustments easy, and include a defrost feature, too.



Extend your camping season.

Available features such as a heated holding tank, water heater bypass and dual-pane windows make it easy to use the Minnie earlier or later in the season.



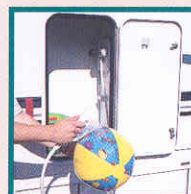
Everything is A-OK.

Quickly check vital functions like tank levels, LP gas and battery power at a glance with Minnie's flush-mounted monitor panel, conveniently located in the galley.



Tow with ease.

The 3,500-pound capacity and 350-pound tongue weight hitch comes standard on the Minnie. □



Good, clean fun.

Sometimes, it gets messy out there while you're having a good time. Just switch on the pump at the available exterior wash station and cleanups are a snap.



Sound idea.

Minnie has a wonderful exterior entertainment center available that includes AM/FM stereo with antenna, a cassette or CD player, 12-volt DC receptacle, TV jack, 110-volt outlet and speakers. Compartment locks securely.



Get the dish.

Expand your viewing options with the Minnie's available TV satellite dish. Pre-wiring for the dish and elevation sensor comes standard.



This should generate interest.

You'll get quiet, efficient power from Minnie's available, high-quality Onan® MicroQuiet™ generator. It supplies 4,000 watts of power to Minnie's 110-volt electrical system.



Bye-bye, drips.

Minnie's built-in rain gutter channels divert water to the front and rear of the coach, away from windows and doors.



You can take it with you.

The slideout system found on the Minnie 24F, 29B and 31C uses the first electric-powered slideout system to meet our stringent quality and performance standards. It features powerful, reliable, dual motor technology with electronic synchronization, which improves room movement and provides for better sealing, along with built in diagnostics for easier service. The Minnie 31C also includes the StoreMore slideout system, which is a Winnebago Industries original and is the industry's premium slideout system. StoreMore allows the large storage compartments that accommodate oversized and odd-shaped items to extend with the slideroom for easy access.

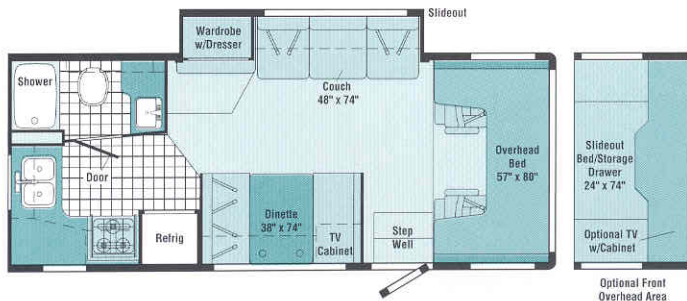
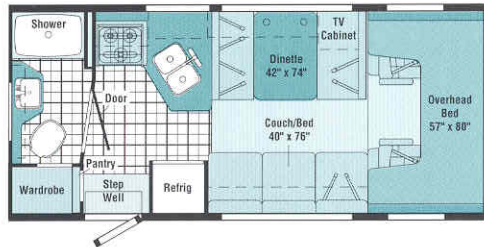
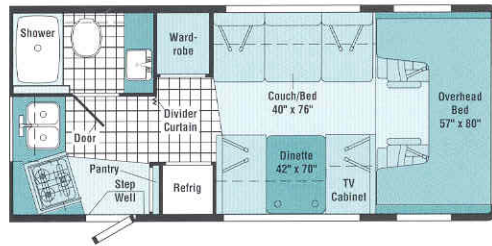


The outside story.

Minnie's one-piece fiberglass sidewall is amazingly tough—typical for Winnebago Industries' design. Also available: an awning to keep you dry, and stainless steel wheel liners, to resist corrosion over the long haul. Step into and out of Minnie with ease, thanks to functional yet good-looking running boards of corrosion-resistant aluminum.

FLOORPLANS

INTERIORS



22E

- Convenient angled rear galley
- Generous sleeping and seating accommodations
- Rear corner bath

22R

- Roomy angled galley
- Rear bath with large wardrobe
- Generous sleeping and seating accommodations

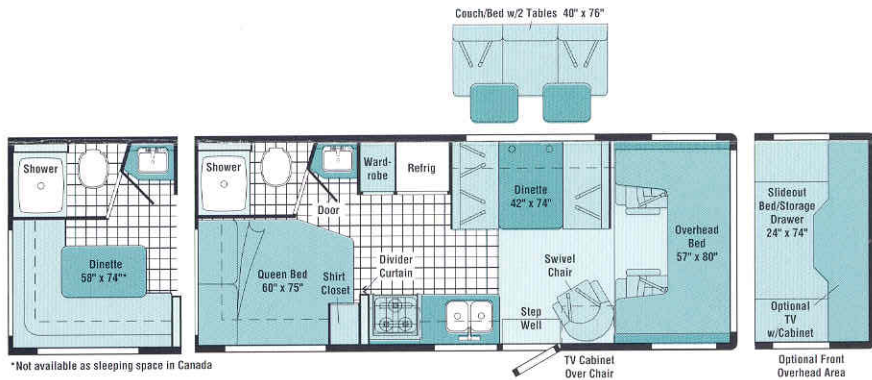
24F NEW!

- Couch/wardrobe slideout
- Roomy wardrobe storage area
- Overhead bunk or available entertainment center w/25" TV
- Large, L-shaped rear galley

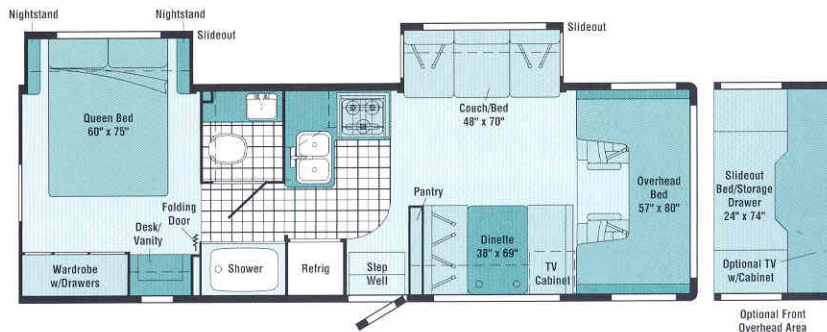
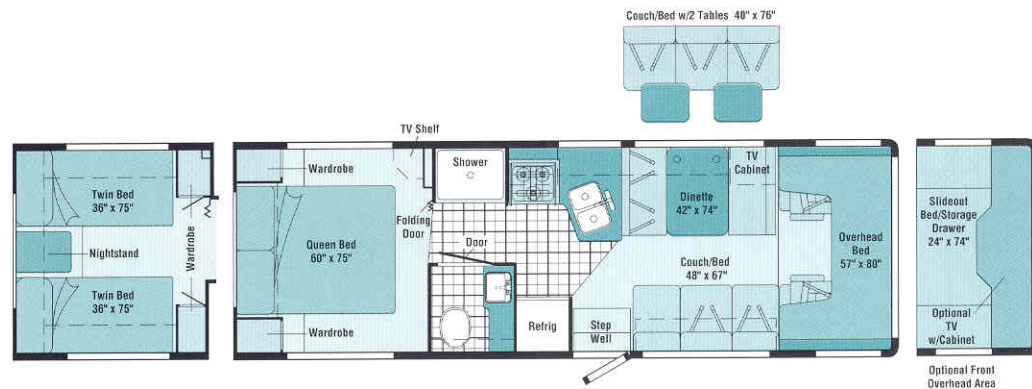


Aqua Frost





*Not available as sleeping space in Canada



24V

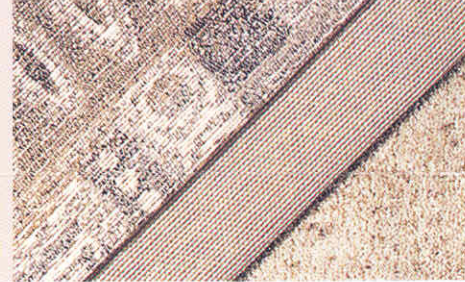
- Private rear bath and bedroom area w/queen-size bed
- NEW swivel/glider lounge chair
- Available rear L-shaped dinette

29N

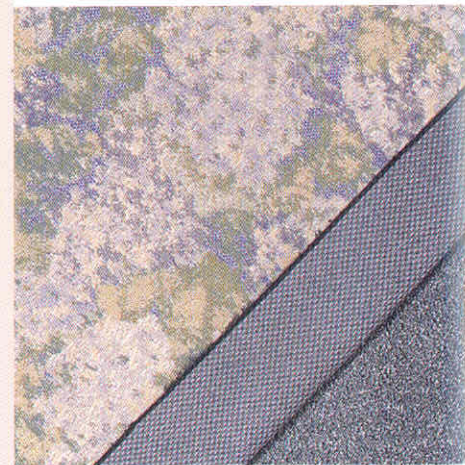
- Angled galley
- Available with queen or twin beds
- Split bath design

29B NEW! Available November 2001

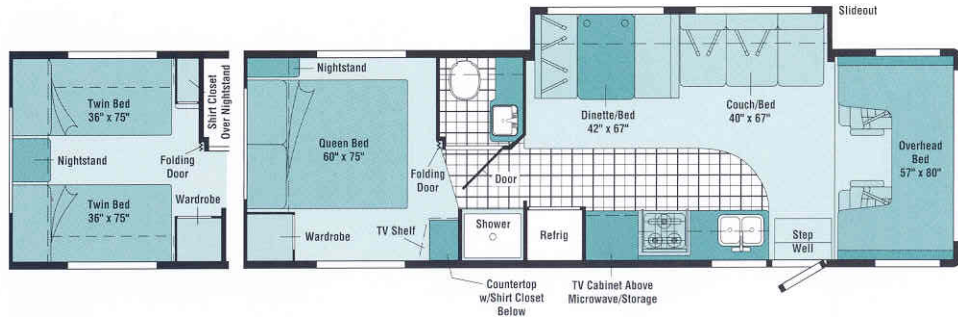
- Dual slideout floorplan
- Split bath design
- Large bedroom wardrobe w/drawers and desk/vanity area
- Overhead bunk or available entertainment center w/25" TV



Sandstone



Bluestone



Note: Dimensions shown are for sleeping space only and dashed lines denote overhead storage areas.

31C

- Couch/dinette **STOREMORE** Slideout System
- In-line galley w/TV cabinet, microwave and ample storage areas
- Available with queen or twin beds



Portsmouth Oak Woodgrain

SPECIFICATIONS

	22E	22R	24F NEW	24V	29N	29B NEW	31C
Length - Ford/Chev	22'1"/22'6"	22'1"/22'6"	24'8"/25'	24'6"/24'11"	29'4"/NA	29'4"/NA	31'4"/NA
Exterior Height w/AC* - Ford/Chev	11'2"/11'3"	11'2"/11'3"	11'2"/11'3"	11'/11'3"	11'2"/NA	11'4"†/NA	11'2"/NA
Exterior Width ^Δ	8'3.9"	8'3.9"	8'3.9"	8'3.9"	8'3.9"	8'3.9"	8'3.9"
Exterior Storage (cu. ft.)	11	12	37	27	61	50†	45
Interior Height	6'11"	6'11"	6'7"	6'11"	6'7"	6'7"	6'7"
Interior Width	8'0"	8'0"	8'0"	8'0"	8'0"	8'0"	8'0"
Fresh Water Capacity w/Heater* (gal.)	36	36	39	46	37	36†	37
Holding Tank Capacity - Black/Gray (gal.)	30/36	36/30	37/35	30/36	27/40	25/31†	34/32
LP Capacity [◇]	12	12	12	12	12	12	18
Fuel Capacity (gal.)	37/35	37/35	55/55	55/55	55/NA	55/NA	55/NA
GCWR - Ford/Chev/Ford (lbs.)	18,500/17,000/NA	18,500/17,000/NA	18,500/17,000/20,000	18,500/17,000/NA	20,000/NA/NA	20,000/NA/NA	20,000/NA/NA
GVWR - Ford/Chev/Ford (lbs.)	10,700/12,300/NA	10,700/12,300/NA	11,500/12,300/14,050	11,500/12,300/NA	14,050/NA/NA	14,050/NA/NA	14,050/NA/NA
GAWR - Front, Ford/Chev/Ford (lbs.)	3,900/4,300/NA	3,900/4,300/NA	4,600/4,300/4,600	4,600/4,300/NA	4,600/NA/NA	4,600/NA/NA	4,600/NA/NA
GAWR - Rear, Ford/Chev/Ford (lbs.)	7,500/8,600/NA	7,500/8,600/NA	8,350/8,600/9,450	8,350/8,600/NA	9,450/NA/NA	9,450/NA/NA	9,450/NA/NA
Wheelbase - Ford/Chev	138"/139"	138"/139"	158"/159"	158"/159"	190"/NA	190"/NA	220"/NA

AUTOMOTIVE/CHASSIS

Chassis - Ford® E450 6.8L Super-Duty V-10 SOHC Triton™ engine, 305 hp, automatic 4-speed overdrive transmission, 4-wheel anti-lock brakes, 130-amp alternator, dual airbags	S	S	S	S	S	S	S
Chassis - Chevrolet® G3500 8.1L SFI Vortec engine, 340 hp, 4L80-E transmission, 4-wheel anti-lock brakes, 124-amp alternator	O	O	O	O			
Chassis* - Ford E450 7.3L Power Stroke® diesel engine, 215 hp, automatic 4-speed overdrive transmission, 4-wheel anti-lock brakes, 130-amp alternator, dual airbags				O	O		
Air Springs auxiliary Ride-Rite® rear						O	O
Tire spare, Tire Tool wrench,	S	S	S	S	S	S	S
Trailer Hitch 3500-lb. drawbar/350-lb. maximum vertical, tongue weight & wiring, □							
Wheel Covers stainless steel							
Wheel Liners stainless steel	O	O	O	O	O	O	O

CAB AREA & DRIVER CONVENIENCES

Beverage Holder, Cab Seats (fabric) w/3-point adjustable seat belts, armrest, lumbar support, multi-adjustable slide/recline, Cigarette Lighter/12-Volt Electrical Supply, Cruise Control, Curtain cab divider, Domelight, Floor Mats rubber driver & passenger, Hood Release, Power Door Locks & Windows, Steering Wheel tilt w/power assist, Sunvisors (2), Trim Panels driver & passenger doors (chassis supplied)	S	S	S	S	S	S	S
Cab Seats leather seating surface	O	O	O	O	O	O	O
Glove Compartment Chevrolet only	S	S	S	S			

ENTERTAINMENT

AM/FM (Cab) AM/FM stereo cassette & CD, Ford, Satellite System Ready, TV Enhancement Package antenna (amplified), 12-volt powerpoint, interior jack(s), coax wiring, cable input (29N, 31C includes bedroom TV shelf or stand*)	S	S	S	S	S	S	S
Radio (Cab) AM/FM stereo cassette, roof-mounted, flexible rubber antenna, speakers (4), Chevy	S	S	S	S			
Entertainment Center (Exterior) w/Cassette or CD Player DC receptacle, AC duplex receptacle, AM/FM radio, TV jack, radio antenna, speakers (2), lockable compartment, Table removable	O	O	O	O	O	O	O
Satellite Dish Antenna Winegard® RV digital, elevation sensing unit	O	O	O	O	O	O	O
TV 13" Color 12-Volt & VCP* w/remotes, front lounge/dinette area w/slide/swivel shelf	O	O	O	O	O	O	
TV 19" Color AC w/remote, video selection system, galley area*							O
TV 19" Color AC & VCR w/remotes & video selection system, galley area*							O
TV 25" Color AC w/remote, video selection system & single front overhead bunk				O	O	O	O
VCR w/remote*				O	O	O	O

INTERIOR

Bunk front overhead w/mattress, sliding side windows, privacy curtain, side storage cabinets, Ceiling textured fabric, Cupholder(s), Lights ceiling, incandescent w/wall switches, Roof Vent nonpowered, front overhead bunk or lounge, Shades pleated, day/night (lounge, dinette, bedroom), mini blinds (bath, galley)	S	S	S	S	S	S	S
Bunk Ladder			S				S
Bunk Window* delete	O	O	O	O	O	O	O
Mirror lounge			S				S
Wardrobe Cabinet carpeted shelf, clothes rod, mirrored door	S	S	S	S			
Windows dual-pane/thermo-insulated	O	O	O	O	O	O	O

CABINETRY

Woodgrain Portsmouth Oak stile-and-rail construction w/raised panel inserts on upper doors	S	S	S	S	S	S	S
---	---	---	---	---	---	---	---

COUNTERTOPS

Laminate w/wood-look edge	S	S	S	S	S	S	S
----------------------------------	---	---	---	---	---	---	---

FLOORCOVERING

Carpeting w/pad, Vinyl bath & galley	S	S	S	S	S	S	S
--	---	---	---	---	---	---	---

FURNITURE

Couch	S	S	S	O	S	S	S
Dinette access to storage below	S	S	S	S	S	S	S
Dinette (Rear) L-shaped*				O			
Lounge Chair w/swivel/glider				S			

GALLEY

Faucet single-control,	S	S	S	S	S	S	S
Microwave Oven, Range Hood w/light & fan, Range 3-burner w/oven, Magic Chef, Refrigerator/Freezer double-door, Norcold®, Sink double, stainless steel w/sink cover (countertop material), Wall Border							
Cutting Board (slideout)							S
Galley Rail countertop material		S			S	S	
Pantry	S	S				S	
Spice Rack built into cabinet		S			S		

BATH

Cabinet lavatory, Cabinet medicine, Faucet (lavatory) dual-control, Faucet (shower) dual-control w/flexible showerhead, Roof Vent power, Shower w/removable clothes rod, Shower Door folding, Sink rectangular, Tissue Holder , Toilet w/foot-pedal flush, Towel Rack 3-rod, mounted to door	S	S	S	S	S	S	S
Light shower	S	S	S		S	S	S
Mirror	S		S		S	S	S
Skylight shower			S		S	S	S
Towel Bar	S		S	S	S	S	S
Towel Ring	S	S	S	S	S		S

BEDROOM

Bed queen, Serta®					S		
Bed queen, Serta, w/underbed storage						S	S
Bed twin, Serta, w/underbed storage						O	O
Bedsread pillow shams			S	S	S	S	S
Desk/Vanity Cabinet w/flip-up countertop, wardrobe & drawers, folding chair							S
Light decorative wall lamp							S
Nightstand w/drawer(s)						S	S
Roof Vent nonpowered					S	S	S
Shirt Closet			S				S
Wardrobe Cabinet with drawers					S	S	S

EXTERIOR

Awning Rails w/rain gutters, Door entrance w/separate screen door, deadbolt lock, Entrance Door Step single, manual, Ladder , Lights porch light w/interior switch, Mirrors plate mount, manual adjust w/convex, Mudflaps rear, Receptacle AC duplex, Running Boards aluminum, Sidewall Skin 1-piece smooth fiberglass, Storage Compartments valance panels, trunk liner	S	S	S	S	S	S	S
Awning* patio	O	O	O	O	O	O	O
Entrance Door Step single, electric w/doorjamb switch	O	O	O	O	O	O	O
Mirrors plate mount, electric remote w/defrost	O	O	O	O	O	O	O

SYSTEMS

Auxiliary Start Circuit, Battery (Coach) deep cycle, Battery (Coach) disconnect system, Battery Charge Control automatic dual, Drain 1" water tank, Electrical Distribution System AC & DC breaker panels, 45-amp converter/charger, Generator Prep Kit, Monitor Panel wall-mount, battery condition gauge, generator hourmeter gauge*, generator start/stop switch*, holding tank levels, LP tank level, water heater light(s), water heater switch, water pump switch, water tank level, Power Cord 30-amp, 25', Sewer Hose 10', stores in bumper, Tank LP, permanent mount w/gauge, Water Heater 6-gallon, electronic ignition, LP gas, Water Heater Winterization Bypass Valve manual, Water Hookup city, Water Pump demand, Water System Winterizing Valve manual, Water Tank Fill w/locking door	S	S	S	S	S	S	S
Air Conditioner (Roof) 13,500 BTU, ceiling-ducted w/wall thermostat	S	S	S	S	S		
Air Conditioner (Roof) 14,800 BTU, ceiling-ducted w/wall thermostat						S	S
Batteries (Coach) (2)* deep cycle	O	O	O	O	O	O	O
Drainage System* heated, electric w/45-amp electronic converter, 1 heat pad per tank, pipe wraps & lighted on/off switch next to monitor panel	O	O	O	O	O	O	O
Furnace 25,000 BTU, low profile	S	S	S	S			
Furnace 30,000 BTU, low profile					S	S	S
Generator* 3,600 watt, Onan MicroQuiet, LP			O		O		
Generator* 4,000 watt, Onan MicroQuiet, gas	O	O	O	O	O	O	O
Inverter* DC/AC, 130 watt			O	O	O	O	O
Wash Station exterior, w/pump switch	O	O	O	O	O	O	O

SLIDEOUT

Slideout Room electric powered, couch/wardrobe w/slidoor cover					S		
Slideout Room electric powered, bed w/slidoor cover, Slideout Room electric powered, couch w/slidoor cover						S	
Slideout Room electric powered, couch/dinette w/slidoor cover, STOR.MORE							S

SAFETY

Airbags driver & passenger, Ford, Assist Handle exterior, Assist Strap interior, Bumpers front & rear, Detectors/Alarms LP leak, smoke, carbon monoxide, Fire Extinguisher 10 B.C., Ground Fault Interrupter , Light center high-mount stop lamp, Light(s) courtesy w/wall switch(es), Seat Belts cab, 3-point, Seat Belts lap (in selected areas)	S	S	S	S	S	S	S
Window escape					S	S	S

WARRANTY

12-month/15,000-mile basic limited warranty, 36-month/36,000-mile warranty on structure,** 10-year limited parts & labor warranty on roof	S	S	S	S	S	S	S
--	---	---	---	---	---	---	---

Not all motor homes are created equal.

As you take a closer look, you'll see that there is much more to the Winnebago Minnie than a long list of standard features and compelling floorplans. Beneath it all you'll find a SuperStructure™ foundation of strength and durability, and Winnebago Industries' recognized service and warranty support.

We are committed to service.

We back our motor homes with the best after-the-sale service in the industry.

- 12-month/15,000-mile basic limited warranty
- 36-month/36,000-mile warranty on structure
- Standard 10-year limited parts-and-labor roof warranty
- Complimentary 24-hour Roadside Assistance Program
- TripSaver emergency warranty parts shipments
- National Dealer service network



Certified quality.

Recreation Vehicle Dealer Association members annually rate RV manufacturers on the quality of their products, and on their sales and service support. Winnebago Industries has achieved the coveted Quality Circle award every year since its inception, the only major motor home manufacturer to do so.

Learn more about what sets Winnebago Industries apart.

Ask your dealer for this guide. It will help you learn what makes Winnebago Industries motor homes distinctly superior to other brands.

Warning: Joining WIT has been known to cause excessive fun.

Winnebago-Itasca Travelers (WIT) is a club for owners of Winnebago Industries motor homes. WIT is a great way to meet people and offers you:

- Caravans and rallies
- Local and state group activities
- Benefits for RVers

SuperStructure

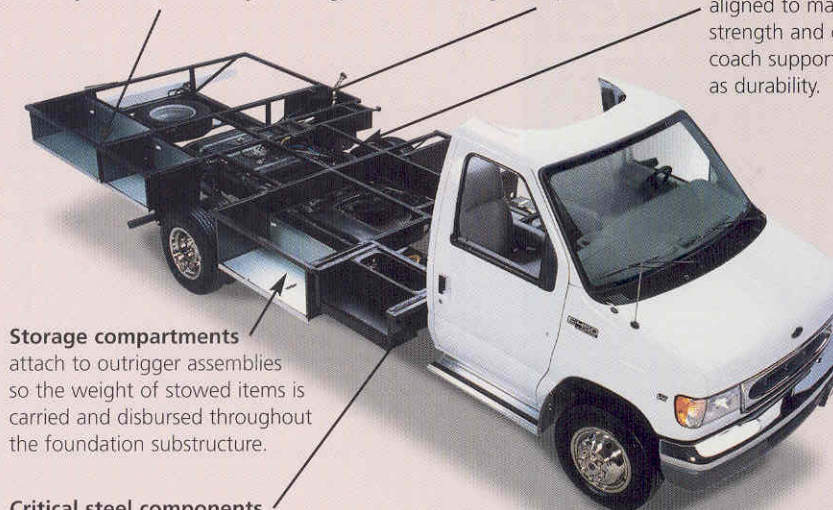
is the term given to Winnebago Industries' structural motor home design and construction. Rather than a single component, it is the culmination of design integration that incorporates steel and aluminum substructures, composite design laminated floor risers, interlocking joint technology, and Thermo-Panel® floor, roof and sidewalls to form a high-strength, durable vehicle body.

SUPER STRUCTURE

Interlocking joint construction utilizes advanced extruded aluminum structural components to create integrated floor-to-sidewall, and sidewall-to-roof joints. This design effectively distributes the weight of the walls and roof, making a stronger and more durable body than competitor designs that rely on screws to carry the weight.

Laminated risers feature a welded aluminum core for superior strength and provide a stable base for the floor structure and storage compartments.

The foundation substructure assembly is precision-aligned to maximize strength and cross-coach support as well as durability.

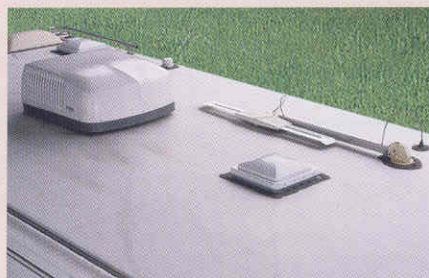


Storage compartments attach to outrigger assemblies so the weight of stowed items is carried and disbursed throughout the foundation substructure.

Critical steel components are treated using an advanced electrodeposition coating process that provides superior corrosion protection.

Built to a higher standard.

The Minnie features a crowned, one-piece fiberglass roof backed with a 10-year limited parts-and-labor warranty. Fiberglass offers superior strength, attractiveness and durability over rubber roofs found on many competitive models. Over time, rubber roofs are susceptible to chalking, streaking and degradation, and have less puncture and tear resistance than fiberglass.



One-year-old competitor's rubber roof



One-year-old Winnebago Industries fiberglass roof

WINNEBAGO Built proudly by
WINNEBAGO
INDUSTRIES

©2001 Winnebago Industries, Inc., Forest City, IA 50436. Printed in USA.

Seat belts are your most important hookup. Always buckle up.
Visit us at www.winnebagoind.com